

MERCY HEALTH CARE SUBDIVISION

A PLANNED UNIT DEVELOPMENT

in the
SW¹/₄ SEC. 1, SE¹/₄ SEC. 2, NE¹/₄ SEC. 11, NW¹/₄ SEC. 12 T 27 S, R. 6 W, W.M.

June 1989

Roseburg, Oregon

Scale: 1" = 100'

STATE OF OREGON)
COUNTY OF DOUGLAS) SS

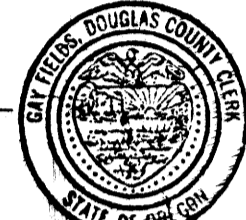
I, George E. Grubb, being duly sworn, depose and say that I am the surveyor who made the survey and prepared the final map of MERCY HEALTH CARE SUBDIVISION, and that the foregoing tracing is an exact copy of the map thereof.

George E. Grubb
George E. Grubb #397

Subscribed and sworn to before me this 28 day of December, 1989

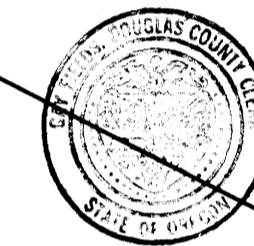
GAY FIELDS, County Clerk

Carol Angela Allport
Gay Fields, County Clerk



STATE OF OREGON)
COUNTY OF DOUGLAS) SS

I, Gay Fields, County Clerk of Douglas County, Oregon, do hereby certify that the within copy of plat has been by me compared with the original thereof and that it is an exact copy of the whole thereof as the same appears in my office and custody. Witness my hand and seal this 29 day of December, 1989



GAY FIELDS, County Clerk
Carol Angela Allport
Gay Fields, County Clerk

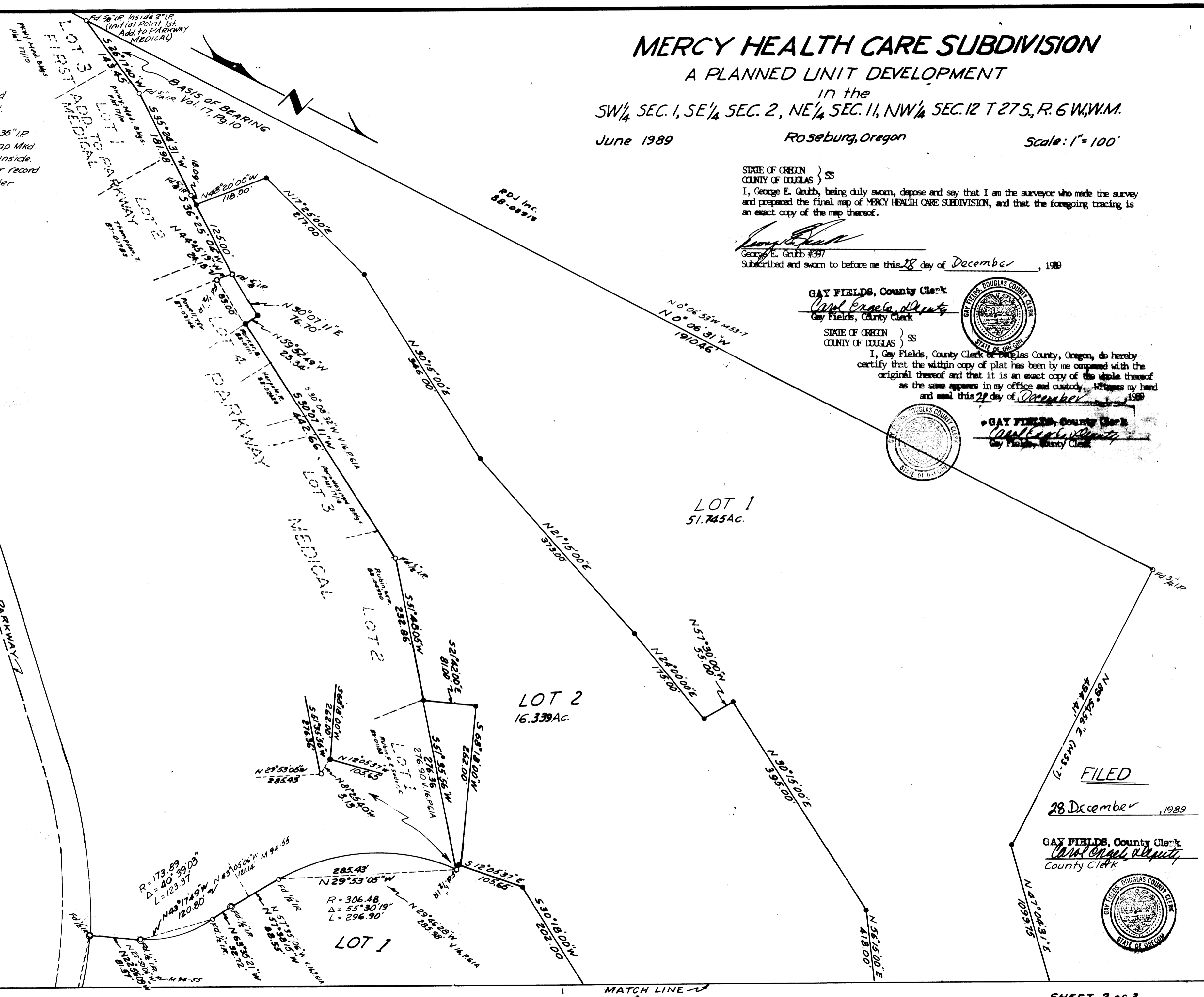
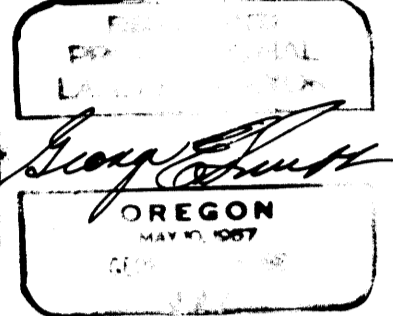
LOT 1
51.745 AC.

LOT 2
16.339 AC.

LOT 1

LEGEND

- - Fd. Monument as Noted
- - Set 5/8" x 30" IR w/ Cap Mkd. BAUGHMAN TECH SERV
- ⊙ - INITIAL POINT - Set 2" x 36" IP With 5/8" x 30" IR w/ Plastic Cap Mkd. BAUGHMAN TECH SERV inside.
- ⊗ - Set PK Nail in Pymt. Over record 1/2" IR Found by Pin Locator



FILED

28 December, 1989

GAY FIELDS, County Clerk
Carol Angela Allport
County Clerk



SHEET 2 of 3

COUNTY RECORDS
DO NOT REMOVE FROM OFFICE