

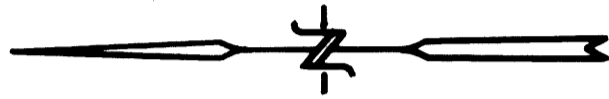
WINTER CREEK HOMES

IN NE 1/4 OF SEC. 27 & NW 1/4 & SW 1/4 SEC. 26,
T26S, R6W, W.M., DOUGLAS COUNTY,
OREGON.

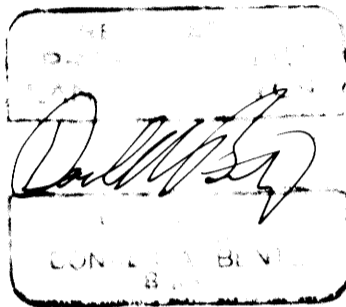
NARRATIVE

SURVEY TO LOCATE MAXIMUM NUMBER OF 5+ ACRE PARCELS, BASED ON THE NUMBER OF AVAILABLE SEPTIC PERMITS. THE EAST LINE DETERMINED BY ULC LINE. THE NORTHEAST CORNER WAS PROPORTIONED PER M-36-49, AND THEN THE SOUTHWEST CORNER WAS PROPORTIONED PER M 40-3. THE MOST SOUTHERLY SOUTHWEST CORNER WAS ESTABLISHED USING RECORD PER RM 3-6. ANGLE POINT IN NORTHERLY LINE ESTABLISHED USING DEED DISTANCE(DISTANCE-DISTANCE INTERSECTION). REMAINING EXTERIOR PER FOUND MONUMENTS.
FIELD-WORK - M. HOLT, T. THEISS
COMP. - D. BENTZ
DRAFTING - R. BRITTELL

LOT DETAIL ONLY



SCALE 1" = 100'



STATE OF OREGON)
COUNTY OF DOUGLAS)SS

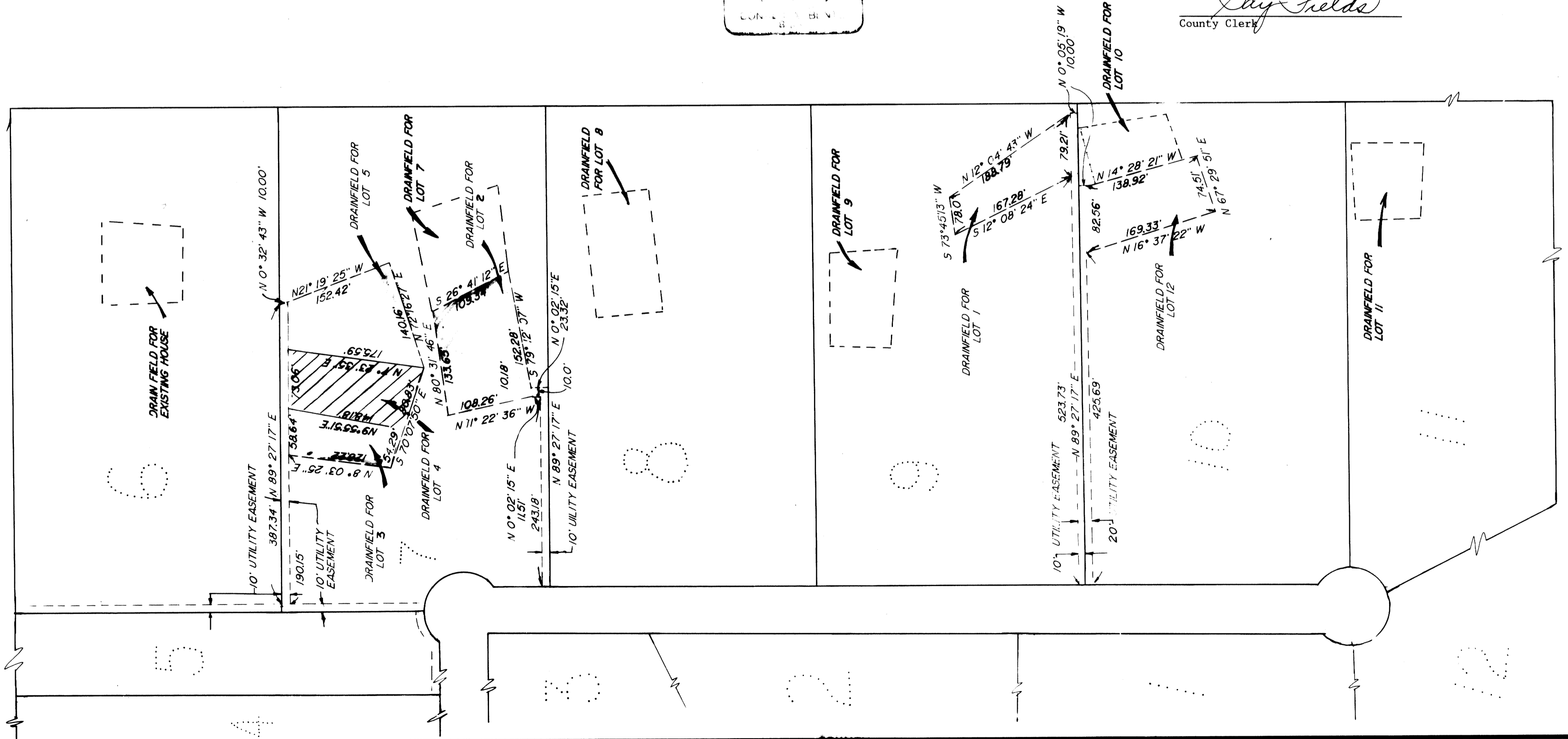
I DONALD A. BENTZ, being duly sworn depose and say that I am the surveyor who surveyed the plat of "WINTER CREEK HOMES" and that the annexed tracing is an exact copy of the final plat thereof.

Donald A. Bentz
Donald A. Bentz L.S. #839

Subscribed and sworn to before me this 28th day of FEBRUARY, 1989.
STATE OF OREGON)
COUNTY OF DOUGLAS)SS I GAY FIELDS, County Clerk of Douglas County, Oregon, do hereby certify that the within copy of plat has been compared by me with the original thereof and that it is an exact copy of the whole thereof as the same appears on file in my office and custody.

Witness my hand and official seal this 28th day of FEBRUARY, 1989.

Gay Fields
County Clerk



VOL. 17 PAGE 30B

page 2 of 2

VOL. 17 PAGE 30B