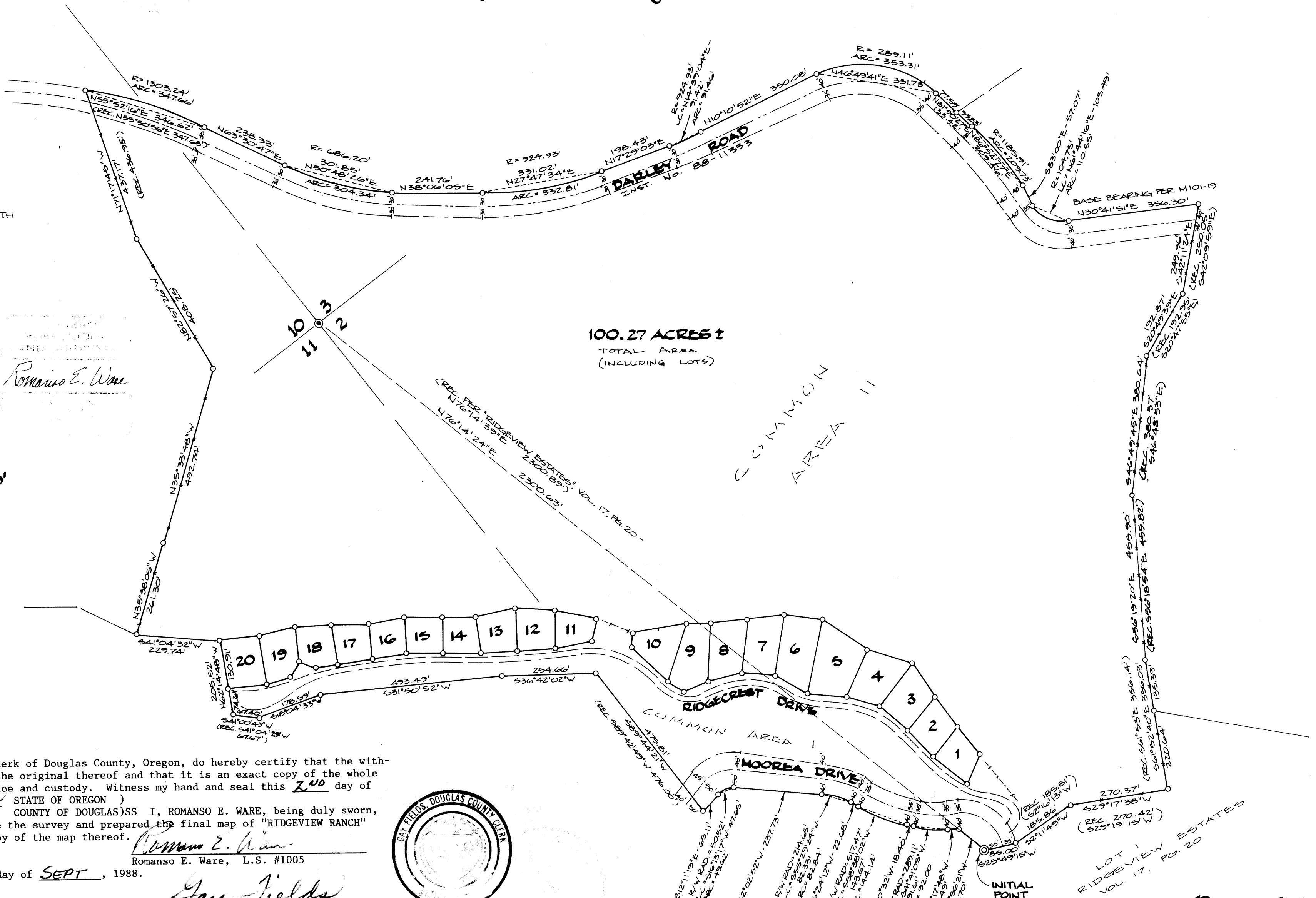
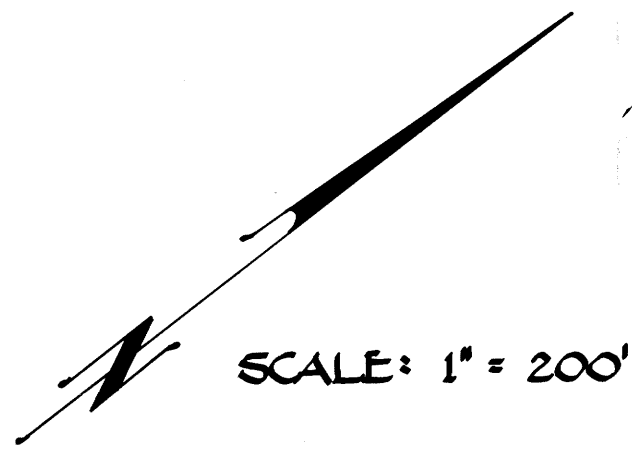


# Ridgeview Ranch

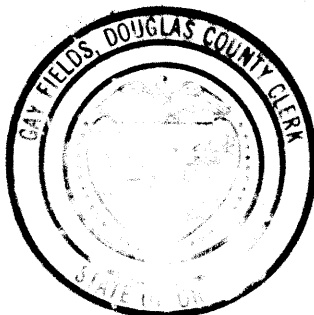
A Planned Unit Development  
 lying in the SW<sup>1</sup>/<sub>4</sub> of Section 2, the SE<sup>1</sup>/<sub>4</sub> of Section 3, the NE<sup>1</sup>/<sub>4</sub> of Section 10,  
 and the NW<sup>1</sup>/<sub>4</sub> of Section 11, Township 27 South, Range 6 West, W.M.

**LEGEND:**

- - FOUND 3/8" IRON ROD
- ⊙ - FOUND 8" DIA. x 24" CONC. MON. WITH 3/8" IRON ROD W/ CAP STAMPED "R.E. WARE - LS 1005"
- - FOUND BRASS CAP (B.T.'S OF REC.)



STATE OF OREGON )  
 COUNTY OF DOUGLAS) SS I, GAY FIELDS, County Clerk of Douglas County, Oregon, do hereby certify that the with-  
 in copy of plat has been by me compared with the original thereof and that it is an exact copy of the whole  
 thereof as the same appears on file in my office and custody. Witness my hand and seal this 2<sup>ND</sup> day of  
SEPT., 1988. Gay Fields STATE OF OREGON )  
 County Clerk ) ROMANSO E. WARE, being duly sworn,  
 depose and say that I am the surveyor who made the survey and prepared the final map of "RIDGEVIEW RANCH"  
 and that the foregoing tracing is an exact copy of the map thereof. Romanso E. Ware



Subscribed and sworn to before me this 2<sup>ND</sup> day of SEPT., 1988.

Gay Fields  
 County Clerk

LOT 1  
 RIDGEVIEW ESTATES  
 VOL. 17, PG. 20