

DIAMOND HEIGHTS - PHASE I

A SUBDIVISION IN NE 1/4 AND NW 1/4 OF SEC. 28, T27S, R6W, W.M.

OWNERS:

DOUBLE G ENTERPRISES, INC.
12122 HASTER STREET
GARDEN GROVE, CA. 92640

TOWN & COUNTRY LAND INVESTORS, INC.
P.O. BOX 622
LEBANON, OR. 97355

DIAMOND LAND COMPANY
2285 STEWART PARKWAY
ROSEBURG, OR. 97470

DIAMOND HEIGHTS DEVELOPMENT
SERVICE COMPANY
2285 STEWART PARKWAY
ROSEBURG, OR. 97470

CHARLES BASS
4373 OLD HIGHWAY 99S
ROSEBURG, OREGON 97470

DEVELOPER:

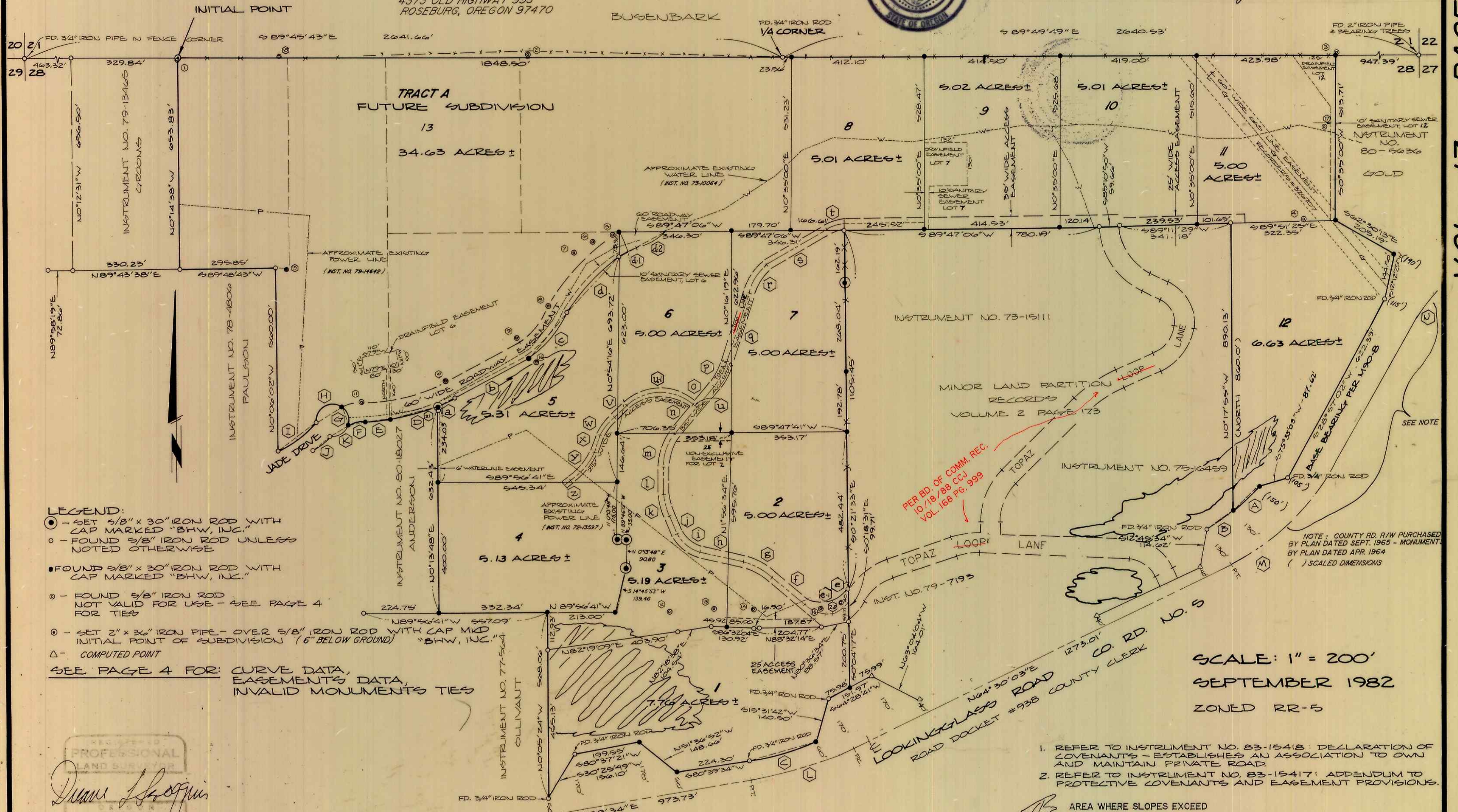
DIAMOND HEIGHTS
DEVELOPMENT SERVICE CO.
2285 STEWART PARKWAY
ROSEBURG, OR. 97470

SURVEYOR:

BHW ENGINEERING, INC.
1205 SE. COURT
ROSEBURG, OR. 97470

STATE OF OREGON)
COUNTY OF DOUGLAS) I, DONALD A. BENTZ, hereby certify this is a true and correct
copy of the Diamond Heights, Phase I in the Northeast 1/4 and Northwest 1/4
of Section 28, Township 27 South, Range 6 West, Willamette Meridian, Douglas County
Oregon.)
Donald A. Bentz, G.S.#839
day of June 1988.)
Gay Fields, County Clerk

STATE OF OREGON)
COUNTY OF DOUGLAS) I, GAY FIELDS, County Clerk, hereby certify that the within copy of plat has been com-
pared by me with the original thereof, and that it is an exact copy of the whole
thereof as the same appears on file in my office and custody. Witness my hand official
seal this 15 day of JUNE, 1988.)
Gay Fields
County Clerk



- LEGEND:**
- - SET 5/8" x 30" IRON ROD WITH CAP MARKED "BHW, INC."
 - - FOUND 5/8" IRON ROD UNLESS NOTED OTHERWISE
 - - FOUND 5/8" x 30" IRON ROD WITH CAP MARKED "BHW, INC."
 - - FOUND 5/8" IRON ROD NOT VALID FOR USE - SEE PAGE 4 FOR TIES
 - - SET 2" x 36" IRON PIPE - OVER 5/8" IRON ROD WITH CAP MID INITIAL POINT OF SUBDIVISION (6" BELOW GROUND) "BHW, INC."
 - △ - COMPUTED POINT
- SEE PAGE 4 FOR: CURVE DATA, EASEMENTS DATA, INVALID MONUMENTS TIES

PROFESSIONAL LAND SURVEYOR
DUANE L. BERGOGGINS
No. 3722

PER BD. OF COMM. REC.
10/18/88 CCJ
VOL. 169 PG. 999

NOTE: COUNTY RD. R/W PURCHASED BY PLAN DATED SEPT. 1965 - MONUMENT. BY PLAN DATED APR. 1964 () SCALED DIMENSIONS

SCALE: 1" = 200'
SEPTEMBER 1982
ZONED RR-5

1. REFER TO INSTRUMENT NO. 83-15418: DECLARATION OF COVENANTS - ESTABLISHES AN ASSOCIATION TO OWN AND MAINTAIN PRIVATE ROAD
2. REFER TO INSTRUMENT NO. 83-15417: ADDENDUM TO PROTECTIVE COVENANTS AND EASEMENT PROVISIONS.

AREA WHERE SLOPES EXCEED 25% OR SLIDE PRONE.

COUNTY SURVEYORS FILE DATA
DO NOT REMOVE FROM OFFICE

VOL. 17 PAGE 21 C

VOL. 17 PAGE 21 C