

I, Romanso E. Ware, being duly sworn, depose and say that I am the Surveyor who made the survey and prepared the final map of "MELQUA, A Planned Unit Development" and that the foregoing tracing is an exact copy of the map thereof.

MELQUA

A Planned Unit Development
 lying in Government Lots 1, 2 & 6
 and the NW 1/4 of the NE 1/4, Section 31
 T26S, R6W, W.M.

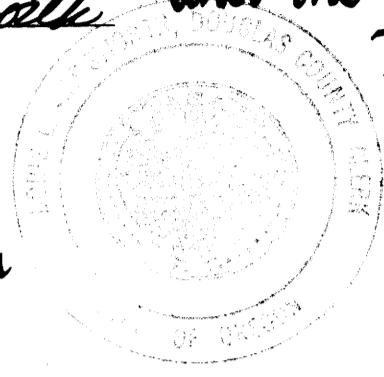
I, Doris Wadsworth, County Clerk of Douglas County, Oregon do hereby certify that the within copy of plat has been by me compared with the original thereof and that it is an exact copy of the whole thereof as the same appears on file in my office and custody.
 Witness my hand and seal of Douglas County, Oregon this 7th day of Nov., 1980.

Subscribed and sworn to before me this 7 day of November, 1980.

Romanso E. Ware

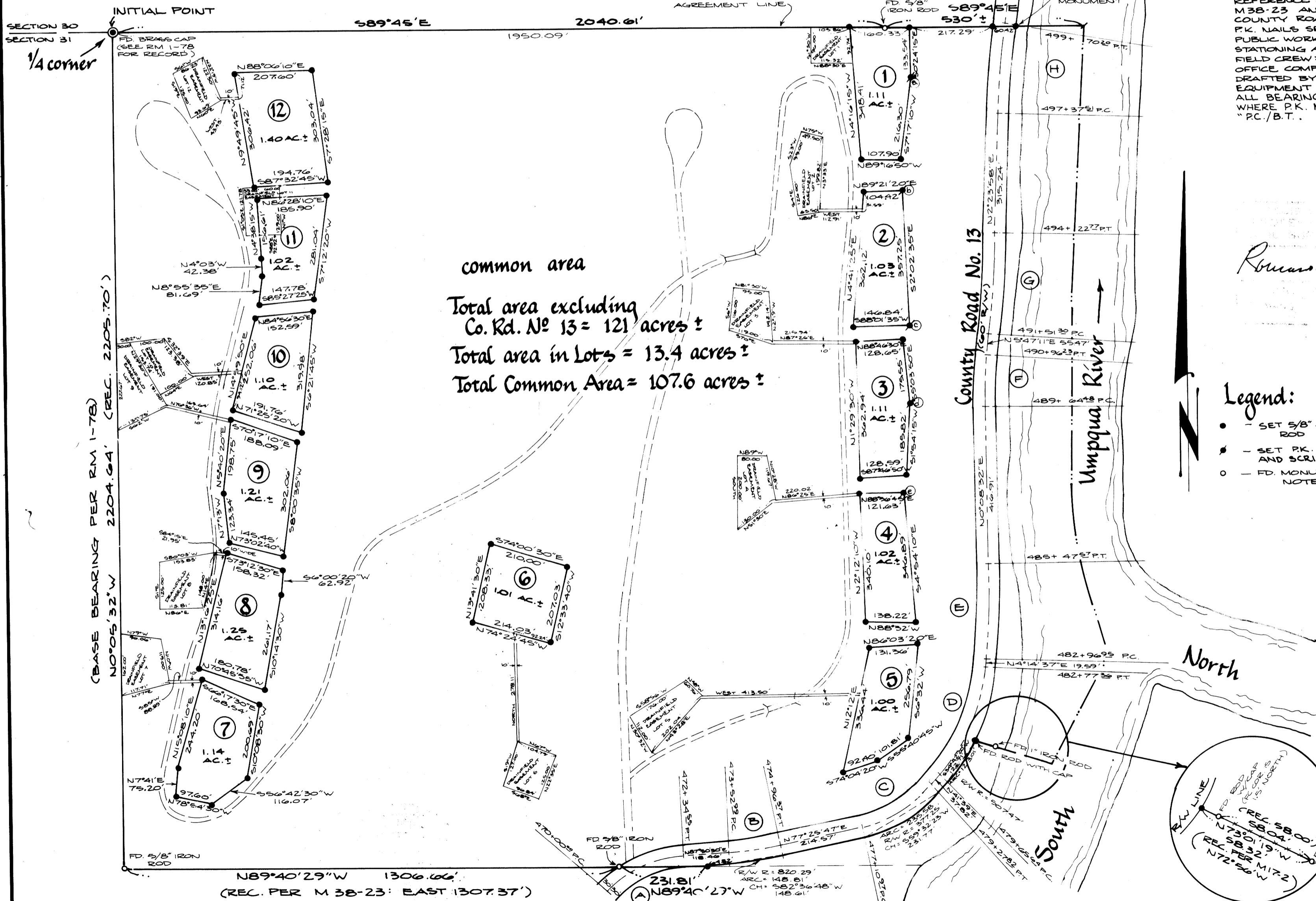
Doris L. Wadsworth

Subdivider: Mark Sterner
 Surveyor: BHW Engineering & Surveying
 1205 S.E. Court, Roseburg, Oregon



Doris L. Wadsworth

Scale: 1" = 200'
 June 1980



common area
 Total area excluding
 Co. Rd. No. 13 = 121 acres ±
 Total area in Lots = 13.4 acres ±
 Total Common Area = 107.6 acres ±

Narrative:

PERIMETER ESTABLISHED PER FOUND MONUMENTS. REFERENCE SURVEYS ARE RM 1-78, M 8-39, M 28-14, M 38-23 AND M 17-2. COUNTY ROAD NO. 13 CENTERLINE LOCATED BY TYING IN P.K. NAILS SET BY GARY HEICHEL'S SURVEY CREW (COUNTY PUBLIC WORKS DEPT.) ESTABLISHING CURVES AND STATIONING AS SHOWN. FIELD CREW: G. LANG, M. LUEDECKE, B. ORTON AND R. WARE. OFFICE COMPUTATIONS: R. WARE. DRAFTED BY D. HOPKINS. EQUIPMENT USED: LEITZ THEODOLITE AND MAC I EDM. ALL BEARING TREES (B.T.'S) ESTABLISHED AND REFERENCED WHERE P.K. NAILS WERE SET IN ROCK AND SCRIBED "PC/B.T."

Romanso E. Ware

Bearing Tree Information

ⓐ	30" SPLIT OAK BEARS WEST 24.3'
ⓑ	12" OAK BEARS S 5° W 22.6'
ⓒ	20" OAK BEARS N 48° W 26.4'
ⓓ	18" OAK BEARS S 23° W 47.0'
ⓔ	6" OAK BEARS S 73° W 17.8'
ⓕ	10" OAK BEARS N 8° W 20.3'
ⓖ	2 1/2" MADRONE BEARS S 24° W 38.2'
ⓗ	16" OAK BEARS N 65° W 31.1'
ⓓ	32" SPLIT MADRONE BEARS N 33° W 25.6'
ⓔ	40" OAK BEARS S 15° W 46.4'

Legend:

- - SET 5/8" x 30" IRON ROD
- ✱ - SET P.K. NAIL IN ROCK AND SCRIBED B.T.'S
- - FD MONUMENT AS NOTED

**County Road No. 13 -
 & curve data**

	Δ	R	L	L.C.
A	43°23'28"	309.71'	234.55'	228.98'
B	0°23'41.2"	790.29'	143.38'	143.18'
C	33°44'47.4"	347.25'	216.85'	213.34'
D	37°24'22.2"	477.47'	311.72'	306.21'
E	4°23'09.0"	3274.08'	250.62'	250.94'
F	5°55'43.2"	1273.24'	131.75'	131.69'
G	3°25'13.5"	4583.66'	270.97'	270.93'
H	4°39'13.6"	2864.79'	232.69'	232.62'

**Ties from Lots (NW corner)
 to N 1/4 CORNER Section 31**

LOT	NORTH	WEST
1	851 FT.	1950.07 FT.
2	439.56 FT.	1981.59 FT.
3	833.88 FT.	1954.34 FT.
4	1235.20 FT.	1960.89 FT.
5	1641.49 FT.	1982.88 FT.
6	1362.42 FT.	983.53 FT.
7	1704.96 FT.	214.52 FT.
8	1373.05 FT.	281.69 FT.
9	1023.35 FT.	297.24 FT.
10	756.14 FT.	368.69 FT.
11	443.90 FT.	373.92 FT.
12	110.08 FT.	319.24 FT.

VOL. 16 PG. 54B

VOL. 16 PG. 54B