

County of Douglas  
 I, Romanso E. Ware, being duly sworn, depose and say that I am the surveyor who made the survey and prepared this plat of BROYHILL PLAZA - PHASE I and that the foregoing tracing is an exact copy of the map therefor.

# BROYHILL PLAZA - PHASE ONE

LYING IN WEST 1/2, SECTION 11, T27S, R6W, W.M.  
 ZONED C-3

Romanso E. Ware  
 Romanso E. Ware, L.S. #1005  
 Subscribed and sworn to before me this 7 day of November, 1980

Doris L. Wadsworth  
 County Clerk

SCALE: 1" = 50'  
 SEPTEMBER 1980

DEVELOPER: L.H. BROYHILL  
 SURVEYOR: BHW ENGINEERING & SURVEYING, INC.  
 1205 S.E. COURT - ROSEBURG, ORE.

**LEGEND:**

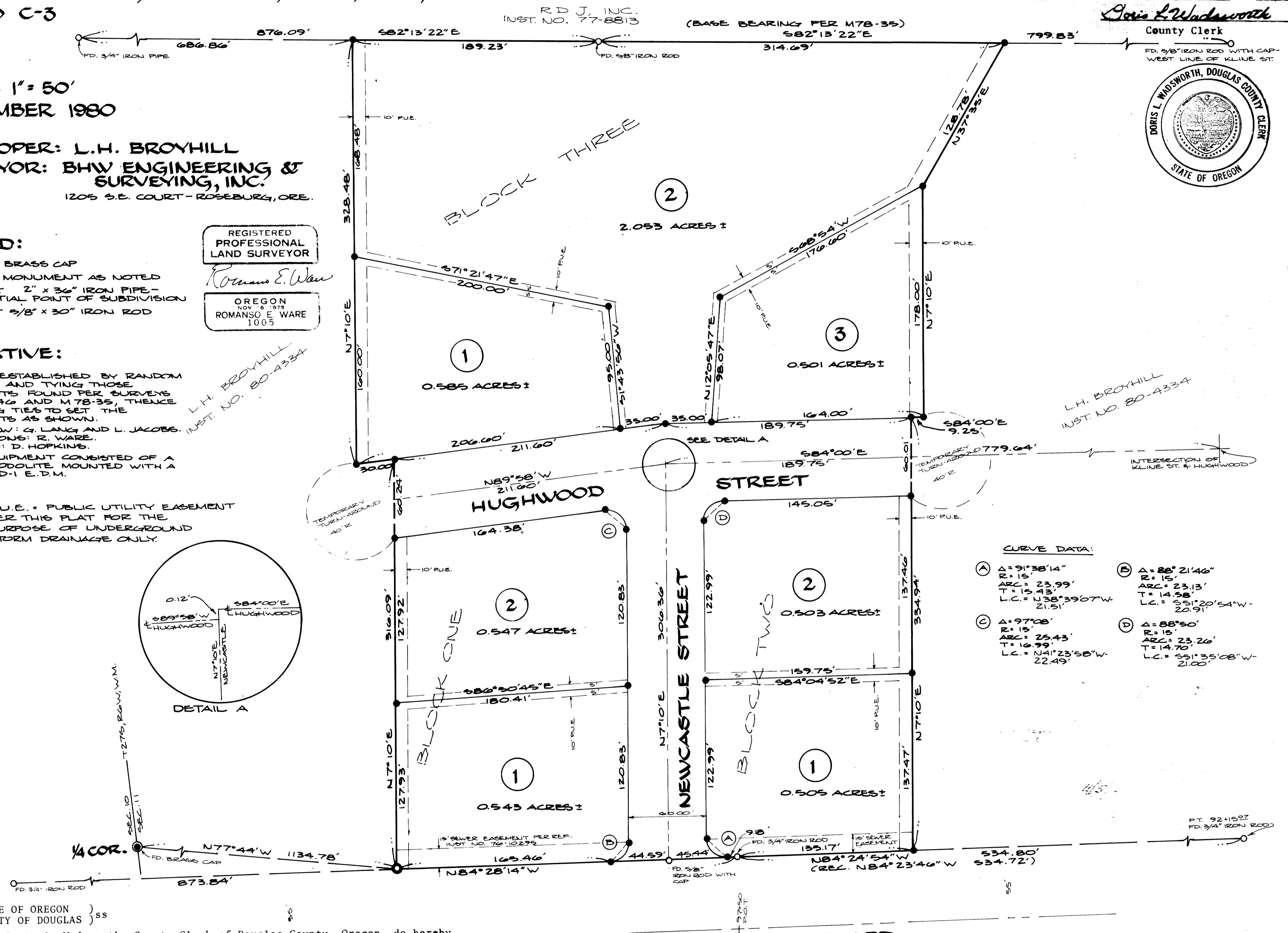
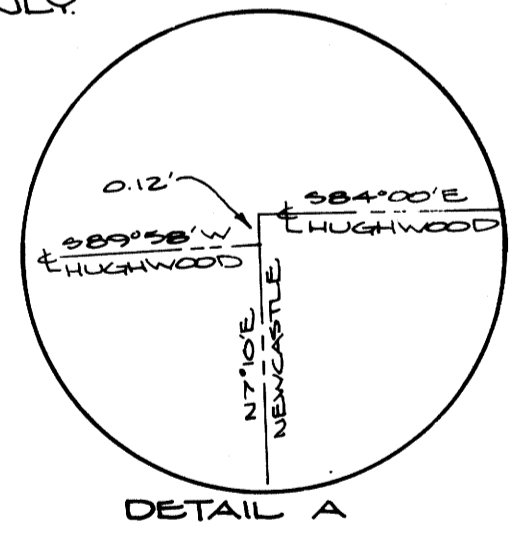
- ⊙ - FD. BRASS CAP
- - FD. MONUMENT AS NOTED
- ⊙ - SET 2" x 3/4" IRON PIPE - INITIAL POINT OF SUBDIVISION
- - SET 5/8" x 30" IRON ROD

REGISTERED PROFESSIONAL LAND SURVEYOR  
 Romanso E. Ware  
 OREGON NOV 8 1973  
 ROMANSO E. WARE 1005

**NARRATIVE:**

CONTROL ESTABLISHED BY RANDOM TRAVERSE AND TYING TO THOSE MONUMENTS FOUND PER SURVEYS C.S. 55/346 AND M 78-35, THENCE COMPUTING TIES TO SET THE MONUMENTS AS SHOWN.  
 FIELD CREW: G. LANG AND L. JACOBS.  
 COMPUTATIONS: R. WARE.  
 DRAFTING: D. HOPKINS.  
 FIELD EQUIPMENT CONSISTED OF A WILD THEODOLITE MOUNTED WITH A LEITZ RED-1 E.D.M.

NOTE: P.U.E. = PUBLIC UTILITY EASEMENT PER THIS PLAT FOR THE PURPOSE OF UNDERGROUND STORM DRAINAGE ONLY.



**CURVE DATA:**

Ⓐ Δ = 91°38'14" R = 15' ARC = 23.99' T = 15.43' L.C. = N38°39'07"W 21.51'	Ⓑ Δ = 88°21'46" R = 15' ARC = 23.13' T = 14.58' L.C. = S51°20'54"W 20.91'
Ⓒ Δ = 97°08' R = 15' ARC = 25.43' T = 16.99' L.C. = N41°23'58"W 22.49'	Ⓓ Δ = 88°50' R = 15' ARC = 23.26' T = 14.70' L.C. = S51°35'08"W 21.00'

STATE OF OREGON }  
 COUNTY OF DOUGLAS } ss

I, Doris Wadsworth, County Clerk of Douglas County, Oregon, do hereby certify that the within copy of plat has been by me compared with the original thereof and that it is an exact copy of the whole thereof as the same appears on file in my office and custody.  
 Witness my hand and seal this 7th day of Nov., 1980

Doris L. Wadsworth  
 County Clerk

GARDEN VALLEY BOULEVARD

VOL. 16 PG. 53 B

VOL 16 PG 53 B

