

# WEST DIVISION

A SUBDIVISION in the CITY of GLENDALE, DOUGLAS COUNTY, OREGON.  
located in Section 32, T. 32 S., R. 6 W., Willamette Meridian.

SCALE: 1 inch = 50 feet

JUNE 1979

### MONUMENTS

- Set 5/8" x 34" I. Rods.
- Found 5/8" x 34" I. Rods.
- Found 1" x 34" I. Rods.
- Initial Point set.

### REFERENCES

- Exterior Survey - file M75-43.
- Deed Records - Vol. 707, page 609 / area = 0.6854 acres ±.
- West as Grantee.

### NOTE:

S/E = existing CITY sanitary easement.  
 U/E = dedicated utility easement.  
 Zoning = R-1, single family residential.  
 GLENDALE FLOOD INSURANCE STUDY - shows homes outside of flood hazard areas.  
 VARIANCES GRANTED -  
 (1) less than 10ft sideyards, Lots 1, 2 and 4.  
 (2) less than 20ft frontyard, Lots 2, 3 and 4.  
 (3) less than 90ft lot depth, Lot 3, ave. 85.15 ft.

### Available Service and other detail:

Homes exist on each of the 4 lots.  
 CITY sewerage service exists to each home.  
 CITY water available with hookups required.  
 Electric Power - existing overhead line service from 30ft. street abutting each lot.  
 Telecommunication - existing overhead on powerline route.  
 ACCESS - CITY streets out Gilbert Ave.

Ronald A. Brandt, P.S. 841  
**CERTIFICATE of SURVEYOR**  
 STATE of OREGON ) S.S.  
 COUNTY of DOUGLAS )



I, Ronald A. Brandt, being first duly sworn, depose and say that I have correctly surveyed and marked with proper monuments the lands delineated on the annexed plat, of which the following is a true and correct description:

Beginning at the INITIAL POINT, a 2" x 36" Galv. Iron Pipe set 12" deep, located N 84° 04' 27" W, 1473.34 ft. from the SE CORNER, Section 32, T. 32 S., R. 6 W., W.M.;  
 thence N 67° 05' W, 152.80 ft. on a line common with City of Glendale property described in Deed Records, Vol. 283, page 344, Douglas County Recorder's Office to a 5/8" I. Rod;  
 thence N 22° 55' E, 190.00 ft. on a line common with said City property to a 5/8" I. Rod;  
 thence N 67° 05' W, 12.30 ft. on a line common with said City property to a 1" I. Rod;  
 thence N 22° 55' E, 200.00 ft. to a 1" I. Rod at the NE Corner of property described in said deed records, Vol. 116, page 29;  
 thence S 00° 01' 40" E, 423.50 ft. to the Point-of-Beginning;

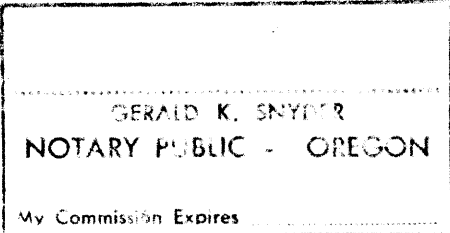
containing 0.6854 acres more-or-less and situate in the SW 1/4, SE 1/4, said Section 32.

*Ronald A. Brandt*  
 PROF. ORE. LAND SURVEYOR - P.S. 841

Subscribed and sworn to me this 26<sup>th</sup> day of June, 1979.

My commission expires on - 7/19/81

*Gerald K. Snyder*  
 NOTARY PUBLIC



### DEDICATION

Know all men by these presents that CHARLIE and ETHEL E. WEST, husband and wife, owners of the lands represented and described on the annexed plat have caused the same to be surveyed and platted by the name of "WEST DIVISION" and do hereby dedicate to the public use forever the easement shown hereon.

*Charlie West*  
 CHARLIE WEST

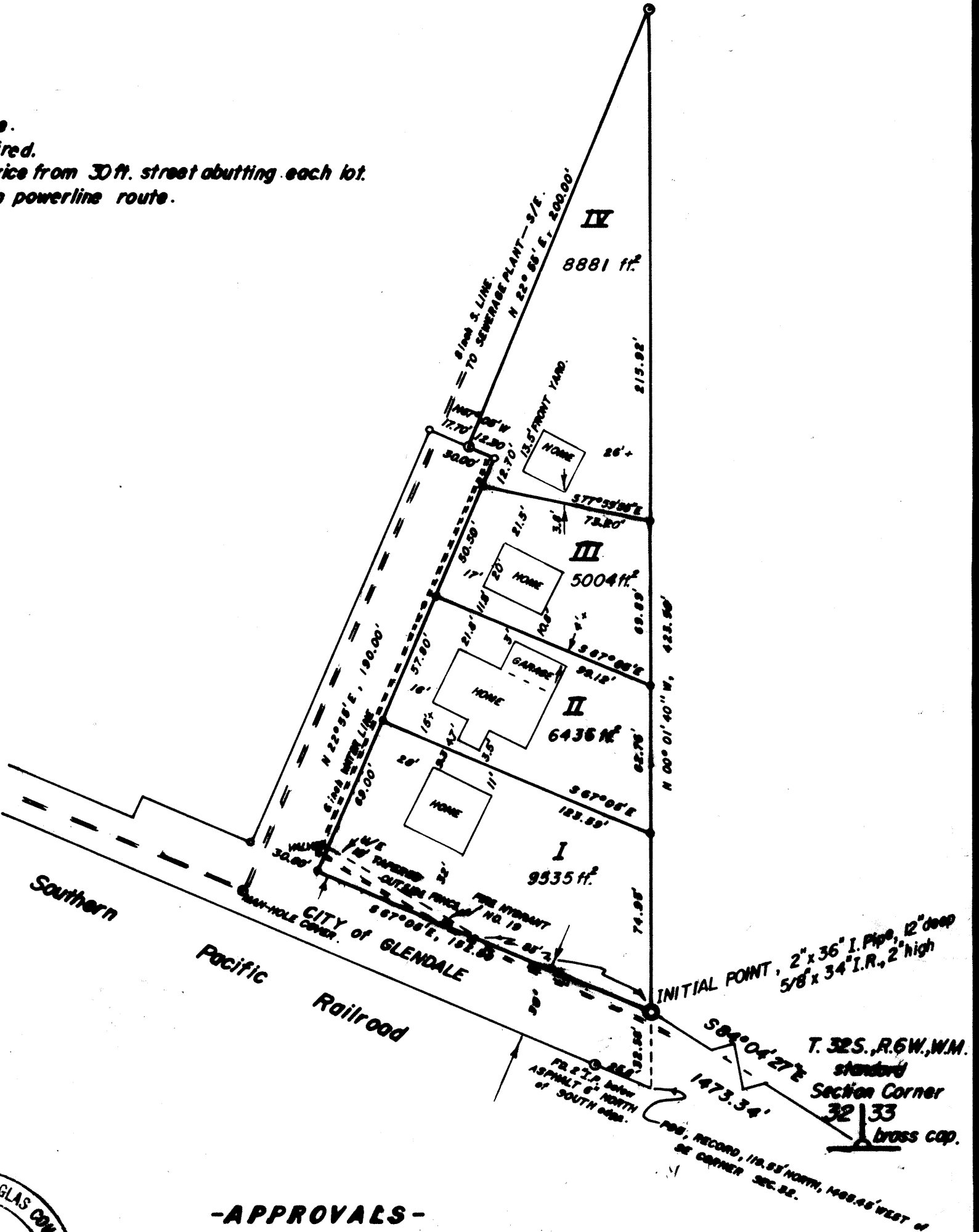
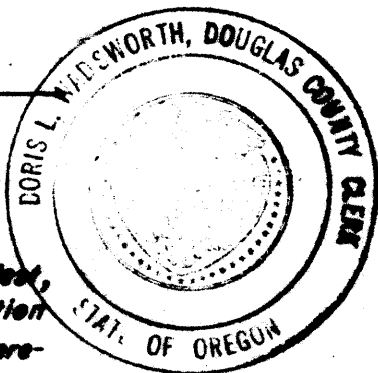
*Ethel E. West*  
 ETHEL E. WEST

### -ACKNOWLEDGEMENT-

STATE of OREGON, COUNTY of DOUGLAS ) S.S.

On the 15<sup>th</sup> day of January, 1980, before me appeared Charlie and Ethel E. West, to me personally known, who being duly sworn did say that they signed the dedication herein as their free and voluntary act and deed. In testimony whereof I have hereunto set my hand and seal this day and year written.

*Doris L. Walworth*  
 COUNTY CLERK



### -APPROVALS-

BY THE ORDER OF THE CITY OF GLENDALE:

Approved 6-29-1979, *George R. Clarke*  
 planning commission - chairman  
 Approved 6-29-1979, *Walter Brooks*  
 city mayor

BY THE ORDER OF BOARD OF COUNTY COMMISSIONERS:

Approved 2-10-1980, *Bill Vian*  
 board chairman  
 Approved 2-11-1980, *Paul Makemani*  
 commissioner  
 Approved 2-11-1980, *Alma*  
 commissioner

BY THE ORDER OF DOUGLAS COUNTY OFFICIALS:

Approved 1-23-1980, *Francis L. Ingram*  
 County Land Surveyor  
 Approved 2-8-1980, *Gary Mach*  
 County Assessor  
 Approved 2-11-1980, *Elizabeth B. Young*  
 County Health Officer

FILED 2-15-1980, *Doris L. Walworth*  
 County Clerk by *Mary L. Reed*, Deputy

