

# SKYLINE RANCHES

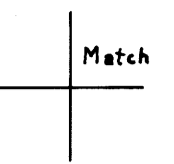
A SUBDIVISION IN SEC. 25, 26, 35 & 36 T29S R6W AND SEC. 31 T29S R5W, W.M.

JANUARY, 1979

HOWARD W. JOHNSTONE, OREGON LAND SURVEYOR

FOR ROSEBURG LUMBER COMPANY

Scale 1"=400'



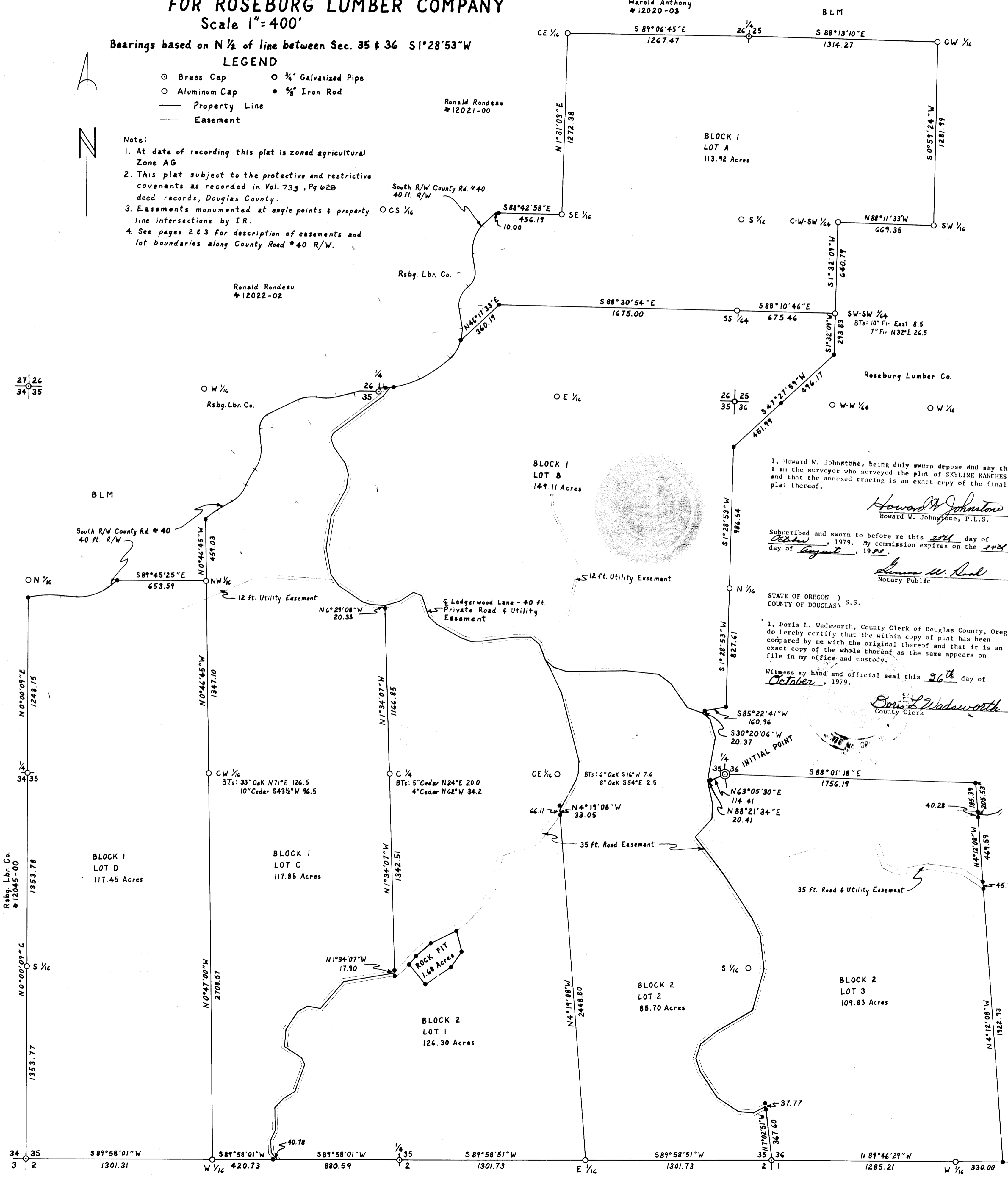
Bearings based on N 1/2 of line between Sec. 35 & 36 S1°28'53"W

### LEGEND

- Brass Cap
- Aluminum Cap
- Property Line
- Easement
- 3/4" Galvanized Pipe
- 5/8" Iron Rod

### Note:

1. At date of recording this plat is zoned agricultural Zone AG
2. This plat subject to the protective and restrictive covenants as recorded in Vol. 735, Pg 628 deed records, Douglas County.
3. Easements monumented at angle points & property line intersections by IR.
4. See pages 2 & 3 for description of easements and lot boundaries along County Road #40 R/W.



I, Howard W. Johnstone, being duly sworn depose and say that I am the surveyor who surveyed the plat of SKYLINE RANCHES and that the annexed tracing is an exact copy of the final plat thereof.

*Howard W. Johnstone*  
Howard W. Johnstone, P.L.S.

Subscribed and sworn to before me this 27th day of August, 1979. My commission expires on the 24th day of August, 1980.

*Shirley W. Reed*  
Notary Public

STATE OF OREGON )  
COUNTY OF DOUGLAS ) S.S.

I, Doris L. Wadsworth, County Clerk of Douglas County, Oregon do hereby certify that the within copy of plat has been compared by me with the original thereof and that it is an exact copy of the whole thereof as the same appears on file in my office and custody.

Witness my hand and official seal this 26th day of October, 1979.

*Doris L. Wadsworth*  
County Clerk