

# SKYLINE RANCHES

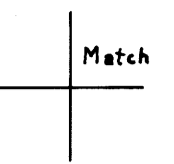
A SUBDIVISION IN SEC. 25, 26, 35 & 36 T29S R6W AND SEC. 31 T29S R5W, W.M.

JANUARY, 1979

HOWARD W. JOHNSTONE, OREGON LAND SURVEYOR

FOR ROSEBURG LUMBER COMPANY

Scale 1"=400'



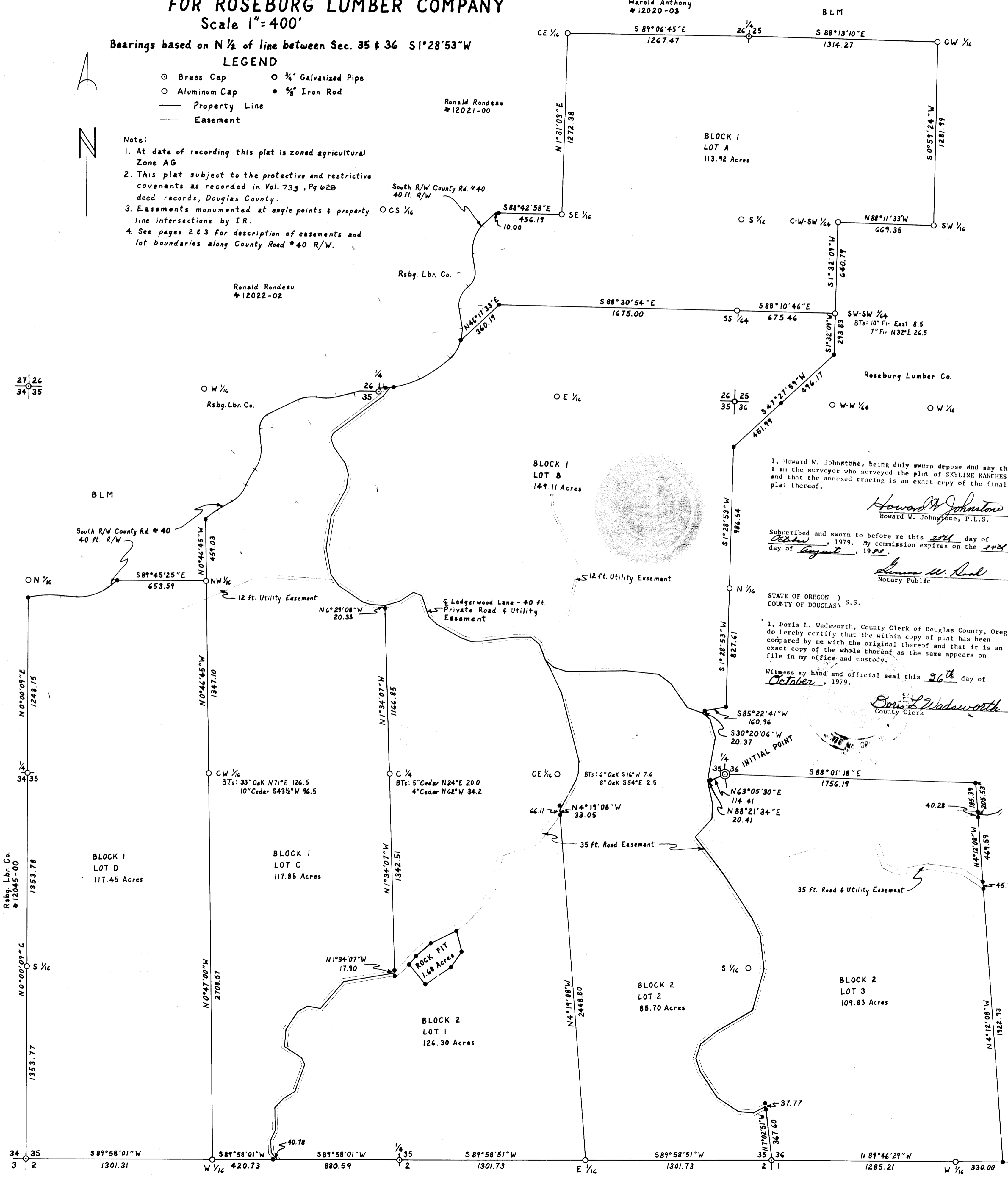
Bearings based on N 1/2 of line between Sec. 35 & 36 S1°28'53"W

### LEGEND

- Brass Cap
- Aluminum Cap
- Property Line
- Easement
- 3/4" Galvanized Pipe
- 5/8" Iron Rod

### Note:

1. At date of recording this plat is zoned agricultural Zone AG
2. This plat subject to the protective and restrictive covenants as recorded in Vol. 735, Pg 628 deed records, Douglas County.
3. Easements monumented at angle points & property line intersections by IR.
4. See pages 2 & 3 for description of easements and lot boundaries along County Road #40 R/W.



I, Howard W. Johnstone, being duly sworn depose and say that I am the surveyor who surveyed the plat of SKYLINE RANCHES and that the annexed tracing is an exact copy of the final plat thereof.

*Howard W. Johnstone*  
Howard W. Johnstone, P.L.S.

Subscribed and sworn to before me this 27th day of August, 1979. My commission expires on the 24th day of August, 1980.

*Shirley W. Reed*  
Notary Public

STATE OF OREGON )  
COUNTY OF DOUGLAS ) S.S.

I, Doris L. Wadsworth, County Clerk of Douglas County, Oregon do hereby certify that the within copy of plat has been compared by me with the original thereof and that it is an exact copy of the whole thereof as the same appears on file in my office and custody.

Witness my hand and official seal this 26th day of October, 1979.

*Doris L. Wadsworth*  
County Clerk

Harold Anthony  
#12020-03

BLM

Ronald Rondeau  
#12022-02

Ronald Rondeau  
#12021-00

South R/W County Rd. #40  
40 ft. R/W

Rsbj. Lbr. Co.

Roseburg Lumber Co.

Rsbj. Lbr. Co.  
#12045-00

#13658-00

C & D Lbr. Co.

#13657-00

BLM

Certificate of Surveyor

I, Howard W. Johnstone, being first duly sworn, depose and say that I have correctly surveyed and marked with proper monuments the lands delineated on the annexed plat, of which the following is a true and correct description: Beginning at a brass cap which is the 1/4 corner to sections 35 & 36, T29S, R6W, W.M.; which also is the initial point of this subdivision; thence, S88°01'18"E 1756.19 ft. along Q of Sec. 36 to an I.R.; thence S4°12'08"E 205.53 ft. to Q of Ledgerwood Lane; thence along Q of Ledgerwood Lane S87°28'27"E 68.67 ft.; N76°25'01"E 66.20 ft.; N51°32'31"E 100.17 ft.; N47°35'52"E 80.78 ft.; N60°56'01"E 286.99 ft.; S79°59'20"E 166.13 ft.; N80°12'22"E 221.24 ft.; S67°31'21"E 112.72 ft.; S79°41'40"E 157.64 ft.; S55°27'46"E 123.74 ft.; S84°55'06"E 77.07 ft.; S61°23'57"E 113.74 ft.; N79°47'34"E 220.92 ft.; N82°02'14"E 431.98 ft.; N51°32'03"E 101.45 ft.; N67°10'01"E 82.25 ft.; N49°35'21"E 89.27 ft.; N78°07'38"E 72.10 ft.; S76°02'57"E 289.17 ft.; S80°33'16"E 11.76 ft.; thence leave road Q N41°32'48"E 294.86 ft. to an IR; thence N25°25'51"E 362.79 ft. to an IR; thence S81°12'14"E 232.59 ft. to an IR; thence N61°22'52"E 299.06 ft. to an IR; thence S40°26'42"E 310.81 ft. to an IR on East bdy. of Sec. 36; thence N0°49'36"E 696.72 ft. along Sec. Line to N 1/4 Cor. between Sec. 36 & 31; thence S89°56'04"E 1800.55 ft. to NW 1/4 Cor. of Sec. 31, T29S, R5W; thence S0°19'04"E 1281.63 ft. to CW 1/4 Cor. Sec. 31; thence S0°20'48"E 2616.52 ft. to W 1/4 Cor. between Sec. 31 & 6; thence S89°07'43"W 1880.40 ft. to SW Cor. Sec. 31; thence N88°01'43"W 2537.44 ft. to 1/4 Cor. between Sec. 36 & 1; thence N89°46'29"W 2570.42 ft. to SW Cor. Sec. 36; thence S89°58'51"W 2603.46 ft. to 1/4 Cor. between Sec. 35 & 2; thence S89°58'01"W 2602.63 ft. to SW Cor. Sec. 35; thence N0°00'09"E 3155.70 ft. to an IR between Sec. 34 & 35 on South R/W line of Boomer Hill County Rd. No. 40; thence along R/W 215.46 ft. along a curve to the right, R=716.20 ft., Δ=17°14'11", L.C.=N87°24'30"E 214.64 ft.; thence S83°58'24"E 111.79 ft. on a tangent; thence 234.00 ft. along a curve to the left, R=295.07 ft., Δ=45°26'07", L.C.=N73°18'33"E 227.92 ft.; thence N50°35'29"E 62.51 ft. on a tangent to an IR on the North line of the SWNW of Sec. 35; thence along the North line S89°45'25"E 653.59 ft. to NW 1/4 Cor. Sec. 35; thence N0°46'45"W 459.03 ft. to an IR on South R/W line of Boomer Hill Rd.; thence along R/W 85.13 ft. along a curve to the right, R=359.77 ft., Δ=13°32'58", L.C.=N53°46'27"E 84.93 ft.; thence N60°32'56"E 122.16 ft. on a tangent; thence 153.98 ft. along a curve to the left, R=217.58 ft., Δ=40°32'56", L.C.=N40°16'28"E 150.79 ft. to the PRC; thence 124.49 ft. along a curve to the right, R=395.15 ft., Δ=18°03'01", L.C.=N29°01'30"E 123.97 ft. to the PRC; thence 161.89 ft. along a curve to the left, R=212.86 ft., Δ=43°34'28", L.C.=N16°15'48"E 158.01 ft.; thence N5°31'26"W 130.17 ft. on a tangent; thence 121.45 ft. along a curve to the right, R=100.08 ft., Δ=69°31'49", L.C.=N29°14'29"E 114.13 ft.; thence N64°00'23"E 237.61 ft. on a tangent; thence 131.41 ft. along a curve to the right, R=197.57 ft., Δ=38°06'28", L.C.=N83°03'37"E 129.00 ft. to the PRC; thence 140.96 ft. along a curve to the left, R=319.79 ft., Δ=25°15'16", L.C.=N89°29'13"E 139.82 ft.; thence N76°51'35"E 130.07 ft. on a tangent; thence 65.88 ft. along a curve to the right, R=716.20 ft., Δ=5°16'13", L.C.=N79°29'42"E 65.86 ft. to a point on the Sec. line between Sec. 26 & 35; thence S89°26'07"E 122.47 ft. along Sec. line to 1/4 Cor. between Sec. 26 & 35; thence N0°56'43"E 11.17 ft. along Q Sec. 26 to the County Rd. R/W; thence along R/W N86°11'30"E 20.89 ft. on a tangent; thence 264.32 ft. along a curve to the left, R=648.63 ft., Δ=23°20'53", L.C.=N74°31'04"E 262.49 ft. to the PRC; thence 260.90 ft. along a curve to the left, R=1074.30 ft., Δ=13°54'52", L.C.=N55°53'11"E 260.26 ft.; thence N48°55'45"E 12.61 ft. on a tangent; thence 146.72 ft. along a curve to the left to an IR POC which is the corner to lots A & B, Block 1; thence continue 82.78 ft. along a curve to the left, R=225.43 ft., Δ=58°22'44", L.C.=N19°44'23"E 219.88 ft.; thence N9°26'59"W 128.99 ft. on a tangent; thence 178.01 ft. along a curve to the right, R=163.31 ft., Δ=62°27'00", L.C.=N21°46'31"E 169.32 ft. to the PRC; thence 133.13 ft. along a curve to the left, R=124.11 ft., Δ=61°27'48", L.C.=N22°16'06"E 126.84 ft.; thence N8°27'48"W 115.04 ft. on a tangent; thence 217.47 ft. along a curve to the right, R=225.43 ft., Δ=55°16'20", L.C.=N19°10'22"E 209.13 ft.; thence N46°48'32"E 129.67 ft. on a tangent to the North line of the SW SE of Sec. 26; thence S88°42'58"E 10.00 ft. to an IR on the said north line; thence S88°42'58"E 456.19 ft. to SE 1/4 Cor. Sec. 26; thence N1°31'03"E 1272.38 ft. to CE 1/4 Cor. Sec. 26; thence S89°06'45"E 1267.47 ft. to 1/4 Cor. between Sec. 26 & 25; thence S88°13'10"E 1314.27 ft. to CW 1/4 Cor. Sec. 25; thence S0°59'24"W 1281.99 ft. to SW 1/4 Cor. Sec. 25; thence N88°11'33"W 669.35 ft. to C-W-SW 1/4 Cor. Sec. 25; thence S1°32'09"W 934.62 ft. to an IR; thence S47°27'59"W 748.16 ft. to an IR on Sec. line between Sec. 35 & 36; thence S1°28'53"W 1814.15 ft. along Sec. line to an IR; thence S85°22'41"W 160.96 ft. to an IR on East R/W Ledgerwood Lane; thence S30°20'06"W 20.37 ft. to Q Ledgerwood Lane; thence along Q S48°42'13"E 72.40 ft.; thence S16°04'27"E 134.56 ft.; thence S9°52'32"W 324.37 ft.; thence N88°21'34"E 20.41 ft. to an IR on the East R/W; thence N63°05'30"E 114.41 ft. to the POB and containing 1221.30 Acres all situated in Sec. 25, 26, 35 & 36, T29S, R6W and Sec. 31, T29S, R5W, W.M., Douglas County, Oregon.

Howard W. Johnstone  
Reg. Oregon Land Surveyor

Subscribed and sworn to before me this 24th day of January, 1979

My commission expires on the 22nd day of August, 1979

James W. Book  
Notary Public

APPROVALS

- By order of the County Planning Commission  
Approved JAN. 18 1979 Ronald R. Grant Chairman  
Approved 1-18 1979 Peter Shade Secretary  
By order of the Board of County Commissioners  
Approved 10-25 1979 Bill Linn Chairman  
Approved 10-26 1979 Commissioner  
Approved 1979 Commissioner  
Approved 2-2 1979 Francis L. Morgan County Surveyor  
Approved 10-25 1979 County Assessor  
Approved 10-25 1979 County Health Officer  
Filed 10-26 - 1979 County Clerk

DEDICATION

Know all men by these presents that Roseburg Lumber Company, owner of the lands represented and described on the annexed plat have caused the same to be surveyed and platted by the name of "SKYLINE RANCHES"

Allyn C. Ford  
Allyn Ford, Vice President

Subscribed and sworn to before me this 24th day of January, 1979  
My commission expires on the 22nd day of August, 1979

James W. Book  
Notary Public

Owner of Said Premises  
G. August, contract purchaser of Lot A, Block 1

William L. & Susan E. Streitz, contract purchasers of Lot B, Block 1

Subscribed and sworn to before me this 24th day of October, 1979  
My commission expires on the 22nd day of August, 1979

James W. Book  
Notary Public

STATE OF OREGON ) S.S.  
COUNTY OF DOUGLAS )

I, Howard W. Johnstone, being duly sworn depose and say that I am the surveyor who surveyed the plat of SKYLINE RANCHES and that the annexed plat is an exact copy of the final plat thereof.

Howard W. Johnstone  
Howard W. Johnstone, P.L.S.

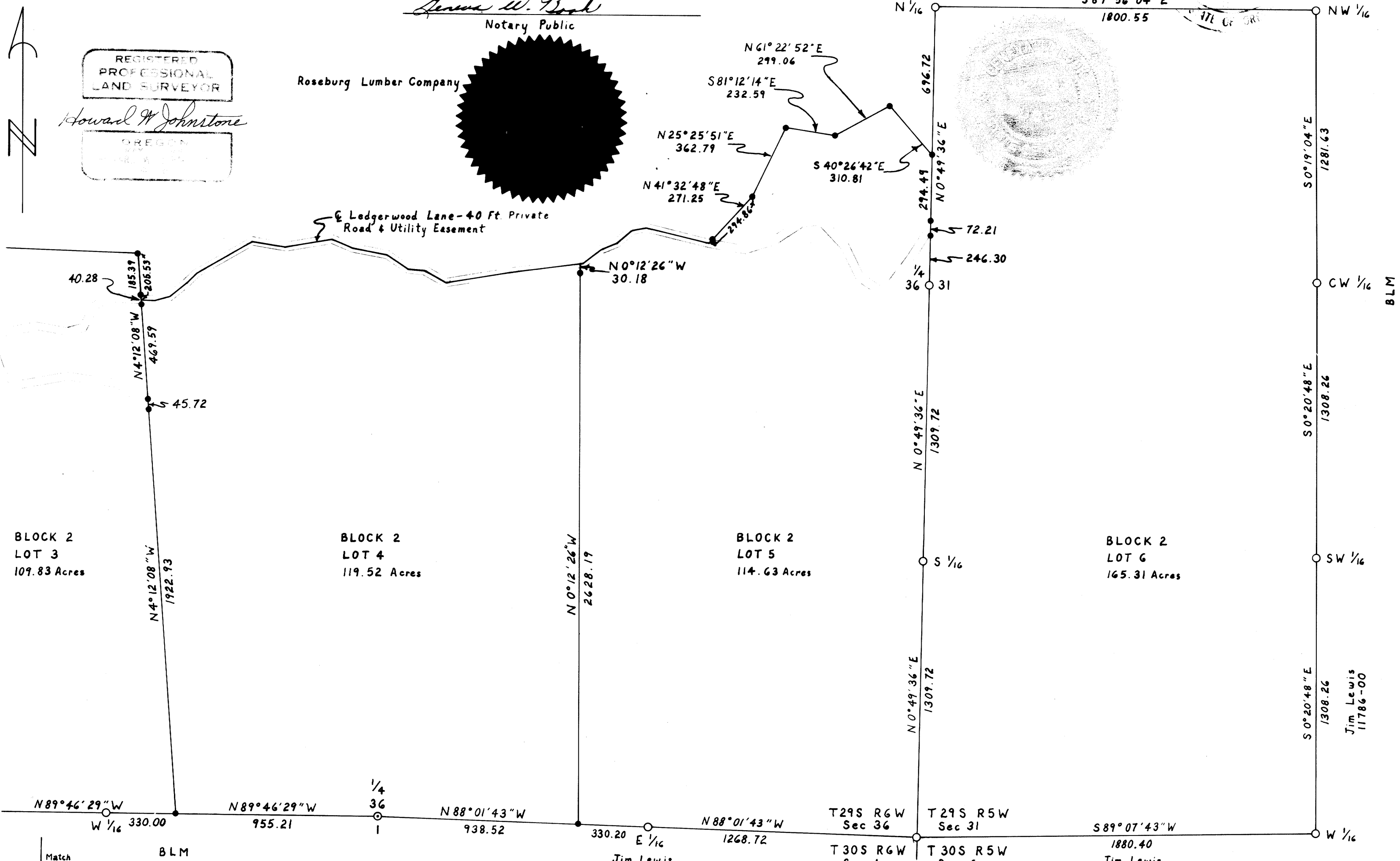
Subscribed and sworn to before me this 24th day of October, 1979. My commission expires on the 22nd day of August, 1979.

James W. Book  
Notary Public

I, Doris L. Wadsworth, County Clerk of Douglas County, Oregon do hereby certify that the within copy of plat has been compared by me with the original thereof and that it is an exact copy of the whole thereof as the same appears on file in my office and custody.

Witness my hand and official seal this 26th day of October, 1979.

Doris L. Wadsworth  
County Clerk



Q Ledgerwood Lane (40' Easement)

Beginning at a POC on the South R/W line of County Road No. 40 which point is the corner to lots B & C, Block 1 and bears N75°28'09"E 68.40 ft. from the 1/4 corner between Sections 26 & 35; thence S37°46'30"W 67.91 ft., S53°18'19"W 436.49 ft., S22°25'28"W 35.14 ft., S15°32'49"E 53.47 ft., S34°30'01"E 151.60 ft., S13°17'57"E 69.77 ft., S7°45'32"W 103.53 ft., S29°05'40"W 223.01 ft., S8°23'01"W 223.22 ft., S10°19'20"E 189.57 ft., S33°47'10"E 94.74 ft., S56°20'38"E 199.16 ft., S70°32'50"E 54.16 ft., S86°09'09"E 113.41 ft. to the corner to lots B & C, Block 1 and lot 1, Block 2; thence N73°10'53"E 111.96 ft., N55°40'57"E 112.68 ft., S68°26'16"E 63.73 ft., S18°39'49"E 155.17 ft., S46°35'50"E 66.38 ft., S61°01'08"E 196.99 ft., S69°49'28"E 58.57 ft., N87°45'45"E 77.33 ft., N82°49'35"E 228.04 ft., N89°20'20"E 123.24 ft., S50°35'12"E 72.51 ft., S22°48'50"E 125.50 ft. to the corner to lot B, Block 1 and lots 1 & 2, Block 2; thence S48°47'32"E 84.67 ft., S72°09'50"E 87.34 ft., N88°52'58"E 410.23 ft., S83°36'20"E 233.75 ft., S53°43'30"E 110.44 ft., S34°20'14"E 207.72 ft., S70°37'35"E 113.08 ft. to the corner to lot B, Block 1 and lot 2, Block 2; thence S48°42'13"E 72.40 ft., S16°04'27"E 134.57 ft., S9°52'32"W 324.37 ft. to the corner to lots 2 & 3, Block 2; thence S13°09'24"E 162.78 ft., S1°54'13"W 101.00 ft. to a point on the boundary between lots 2 & 3, Block 2; thence across lot 3 S1°54'13"W 62.77 ft., S18°12'06"E 89.93 ft., S49°26'26"E 87.61 ft., S70°09'53"E 331.76 ft., N72°02'50"E 396.02 ft., N61°32'33"E 59.48 ft., N48°34'25"E 126.54 ft., N62°38'50"E 101.20 ft., S62°56'28"E 184.43 ft., N79°10'17"E 190.50 ft., S81°08'52"E 146.32 ft., N73°51'03"E 72.67 ft., N27°33'36"E 112.91 ft., N58°37'27"E 77.76 ft., S87°28'27"E 156.29 ft. to the NW corner of lot 4, Block 2; thence S87°28'27"E 68.67 ft., N76°25'01"E 66.20 ft., N51°32'31"E 100.17 ft., N47°35'52"E 80.78 ft., N60°56'01"E 286.99 ft., S79°59'20"E 166.13 ft., N80°12'22"E 221.24 ft., S67°31'21"E 112.72 ft., S79°41'40"E 157.64 ft., S55°27'46"E 123.74 ft., S84°55'06"E 77.07 ft., S61°23'57"E 113.74 ft., N79°47'34"E 220.92 ft., N82°02'14"E 408.91 ft. to the corner of lots 4 & 5, Block 2; thence N82°02'14"E 23.07 ft., N51°32'03"E 101.45 ft., N67°10'01"E 82.25 ft., N49°35'21"E 89.27 ft., N78°07'38"E 72.10 ft., S76°02'57"E 289.17 ft., S80°33'16"E 11.76 ft. to a point on the North boundary of lot 5; thence across lot 5 S80°33'16"E 164.89 ft., N72°01'15"E 148.48 ft., N55°40'16"E 144.38 ft., N84°20'05"E 93.53 ft., S43°32'46"E 166.06 ft., S26°32'13"E 163.13 ft., S56°18'10"E 120.28 ft., N52°49'12"E 37.54 ft., N36°24'46"E 198.79 ft., N34°27'47"E 157.49 ft. to a point on the section line which is the boundary between lots 5 & 6, Block 2 and which point bears N0°49'36"E 282.41 ft. from the 1/4 corner between Sec. 36 & 31.

Rock Pit

Beginning at an IR on the South line of a 35' road easement in Lot 1, Block 2 which bears N2°10'36"E 1392.45 ft. from the 1/4 Corner between Sec. 35 & 2; thence along easement N39°58'10"E 76.06 ft. to an IR; thence N50°07'02"E 124.82 ft. to an IR; thence N62°29'36"E 211.33 ft. to an IR; thence leave easement S14°53'52"E 152.66 ft. to an IR; S34°47'41"W 134.88 ft. to an IR; thence S55°37'01"W 217.45 ft. to an IR; thence N38°21'53"W 185.13 ft. to the point of beginning containing 1.68 acres.

Q 12' Easement Across Lot C, Block 1

Beginning at a point on the Q of Ledgerwood Lane which is S13°13'17"W 1362.70 ft. from the 1/4 Corner between Sec. 26 & 35; thence N86°06'32"W 546.42 ft., S66°35'04"W 382.29 ft. to a point on the boundary between Lots C & D, Block 1 which is S0°46'45"E 106.55 ft. from the NW 1/4 Corner of Sec. 35.

Lot D, Block 1 Along County Road R/W

Beginning at an IR on the line between Sec. 34 & 35; thence 215.46 ft. along a curve to the right, R=716.20 ft., Δ=17°14'11", L.C.=N87°24'30"E 214.64 ft.; thence S83°58'24"E 111.79 ft. on a tangent; thence 234.00 ft. along a curve to the left, R=295.09 ft., Δ=45°26'07", L.C.=N73°18'33"E 227.92 ft.; thence N50°35'29"E 62.51 ft. on a tangent to an IR on the North line of the SWNW of Sec. 35.

Lot C, Block 1 Along County Road R/W

Beginning at an IR on the West line of the NENW Sec. 35; thence 85.13 ft. along a curve to the right, R=359.97 ft., Δ=13°32'58", L.C.=N53°46'27"E 84.93 ft.; thence N60°32'56"E 122.16 ft. on a tangent; thence 153.98 ft. along a curve to the left, R=217.58 ft., Δ=40°32'56", L.C.=N40°16'28"E 150.79 ft. to the PRC; thence 124.49 ft. along a curve to the right, R=395.15 ft., Δ=18°03'01", L.C.=N29°01'30"E 123.97 ft. to the PRC; thence 161.89 ft. along a curve to the left, R=212.86 ft., Δ=43°34'28", L.C.=N16°15'48"E 158.01 ft.; thence N5°31'26"W 130.17 ft. on a tangent; thence 121.45 ft. along a curve to the right, R=100.08 ft., Δ=69°31'49", L.C.=N29°14'29"E 114.13 ft.; thence N64°00'23"E 237.61 ft. on a tangent; thence 131.41 ft. along a curve to the right, R=197.57 ft., Δ=38°06'28", L.C.=N83°03'37"E 129.00 ft. to the PRC; thence 140.96 ft. along a curve to the left, R=319.79 ft., Δ=25°15'16", L.C.=N89°29'13"E 139.82 ft.; thence N76°51'35"E 130.09 ft. on a tangent; thence 65.88 ft. along a curve to the right, R=716.20 ft., Δ=5°16'13", L.C.=N79°29'42"E 65.86 ft. to a point on the Sec. line between Sec. 26 & 35; thence S89°26'09"E 122.47 ft. to the 1/4 Cor. between Sec. 26 & 35; thence N0°56'43"E 11.17 ft. along Q Sec. 26 to a point on the R/W; thence along R/W N86°11'30"E 20.89 ft. on a tangent; thence 17.45 ft. along a curve to the left, R=648.63 ft., Δ=1°32'31", L.C.=N85°25'14"E 17.45 ft. to an IR on the West R/W Ledgerwood Lane; thence 27.98 ft. along a curve to the left, R=648.63 ft., Δ=2°28'16", L.C.=N83°24'52"E 27.97 ft. to the Q of Ledgerwood Lane.

Q 35' Easement Between Lot C, Block 1 & Lot 1, Block 2 Across Lot 1 and Between Lots 1 & 2, Block 2

Beginning at a point on the South line of Sec. 35 which bears S89°58'01"W 860.19 ft. from the 1/4 corner between Sec. 35 & 2 and which point is the corner to Lot C, Block 1 and Lot 1, Block 2; thence N30°55'54"W 87.73 ft., N2°03'29"W 69.09 ft., N24°27'55"E 84.46 ft., N1°20'50"W 148.48 ft., N41°10'15"E 78.75 ft., N58°44'56"E 102.16 ft., N19°18'55"E 211.50 ft., N23°58'53"W 53.40 ft., N59°55'25"W 128.45 ft., N2°12'59"E 122.24 ft., N33°21'44"E 161.21 ft., N60°48'09"E 63.21 ft., S81°11'09"E 92.24 ft., N42°08'36"E 266.70 ft., N76°19'37"E 354.44 ft. to a point on the Q of Sec. 35 which is the corner of Lot C, Block 1 and Lot 1, Block 2; thence across Lot 1 N76°19'37"E 5.91 ft., N62°16'05"E 45.66 ft., N44°22'39"E 43.89 ft., N39°58'10"E 76.94 ft., N50°07'02"E 128.27 ft., N62°29'36"E 211.92 ft., N53°57'11"E 56.78 ft., N51°12'40"E 53.01 ft., N48°20'25"E 53.75 ft., N43°09'00"E 152.74 ft., N33°28'54"E 64.87 ft., N19°26'37"E 120.95 ft., N4°53'50"E 74.34 ft., N14°10'55"E 69.31 ft., N68°09'28"E 92.97 ft., N80°43'20"E 76.52 ft., N68°27'34"E 74.00 ft., N47°23'19"E 41.51 ft., N36°25'27"E 195.14 ft., N34°29'45"E 32.29 ft., N27°38'59"E 26.99 ft. to the corner of Lots 1 & 2, Block 2; thence between Lots 1 & 2 N27°38'59"E 236.88 ft., N16°52'16"E 50.57 ft., N4°52'59"E 84.99 ft., N14°57'21"W 513.96 ft., N26°50'32"W 194.71 ft. to a point on the South R/W of Ledgerwood Lane; thence N23°19'32"W 46.51 ft. to a point on the Q of Ledgerwood Lane which is the corner of Lot B, Block 1 and Lots 1 & 2, Block 2 which point bears N56°58'53"W 1503.43 ft. from the 1/4 Cor. between Sec. 35 & 36.

Q 35' Easement Between Lots 2 & 3, Block 2

Beginning at a point on the Sec. line between Sec. 35 & 36 which bears N7°02'51"W 386.48 ft. from the SE Corner of Sec. 35; thence S60°52'49"W 85.30 ft., N86°15'11"W 100.17 ft., N57°22'03"W 182.67 ft., N33°43'23"W 224.50 ft., N15°35'56"W 96.17 ft., N18°33'35"E 100.04 ft., N49°56'00"E 119.41 ft., N58°56'39"E 316.67 ft., N14°48'02"E 307.08 ft., N6°13'46"W 214.06 ft., N23°41'59"W 142.88 ft., N32°36'45"W 402.82 ft., N37°35'53"W 300.33 ft., N42°37'57"E 162.98 ft. to a point on the Q of Ledgerwood Lane which bears S15°53'02"W 324.20 ft. from the 1/4 Cor. between Sec. 35 & 36.

Q 35' Easement in Lot 3, Block 2

Beginning at a point on the boundary between Lots 3 & 4, Block 2 which is S88°01'18"E 1756.19 ft. and S4°12'08"E 718.12 ft. from the 1/4 Corner between Sec. 35 & 36; thence N54°09'46"W 172.54 ft., N83°00'34"W 247.38 ft., S79°42'24"W 210.21 ft., N60°27'55"W 101.62 ft., N20°27'58"W 241.90 ft. to a point on the Q of Ledgerwood Lane which bears S68°41'50"E 1118.99 ft. from the 1/4 Corner between Sec. 35 & 36.

Q 12' Easement in Lot B, Block 1

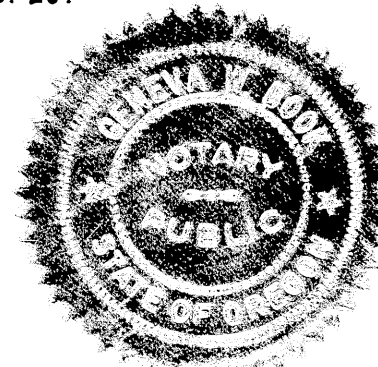
Beginning at a point on the Q of Ledgerwood Lane which is N54°28'04"W 1609.90 ft. from the 1/4 Corner between Sec. 35 & 36; thence N27°58'12"E 53.13 ft., N48°27'57"E 225.97 ft., N12°37'22"E 370.31 ft., N26°36'35"W 412.97 ft., N4°13'44"W 125.13 ft. to a power pole which bears S59°49'45"E 1372.50 from the 1/4 Corner between Sec. 26 & 35.

Lot B, Block 1 Along County Road R/W

Beginning at the Q of Ledgerwood Lane; thence 29.27 ft. along a curve to the left, R=648.63 ft., Δ=2°35'07", L.C.=N80°53'10"E 29.27 ft. to an IR on the East R/W Ledgerwood Lane; thence 189.62 ft. along a curve to the left, R=648.63 ft., Δ=16°44'59", L.C.=N71°13'07"E 188.95 ft. to the PRC; thence 260.90 ft. along a curve to the left, R=1074.30 ft., Δ=13°54'52", L.C.=N55°53'11"E 260.26 ft.; thence N48°55'45"E 12.61 ft. on a tangent; thence 146.92 ft. on a curve to the left, R=225.43 ft., Δ=37°20'26", L.C.=N30°15'33"E 144.33 ft. to an IR between Lots A & B.

Lot A, Block 1 Along County Road R/W

Beginning at an IR between Lots A & B; thence 82.78 ft. along a curve to the left, R=225.43 ft., Δ=21°02'18", L.C.=N1°04'09"E 82.31 ft.; thence N9°26'59"W 128.99 ft. on a tangent; thence 178.01 ft. along a curve to the right, R=163.31 ft., Δ=62°27'00", L.C.=N21°46'31"E 169.32 ft. to the PRC; thence 133.13 ft. along a curve to the left, R=124.11 ft., Δ=61°27'48", L.C.=N22°16'06"E 126.84 ft.; thence N8°27'48"W 115.04 ft. on a tangent; thence 217.47 ft. along a curve to the right, R=225.43 ft., Δ=55°16'20", L.C.=N19°10'22"E 209.13 ft.; thence N46°48'32"E 129.69 ft. on a tangent to the North line of the SWSE Sec. 26.



I, Howard W. Johnstone, being duly sworn depose and say that I am the surveyor who surveyed the plat of SKYLINE RANCHES and that the annexed tracing is an exact copy of the final plat thereof.

Howard W. Johnstone, Notary Public

Subscribed and sworn to before me this 20th day of October, 1979. My commission expires on the 19th day of August, 1981.

Notary Public

STATE OF OREGON ) COUNTY OF DOUGLAS) S.S.

I, Doris L. Wadsworth, County Clerk of Douglas County, Oregon, do hereby certify that the within copy of plat has been compared by me with the original thereof and that it is an exact copy of the whole thereof as the same appears on file in my office and custody.

Witness my hand and official seal this 26th day of October, 1979.

Doris L. Wadsworth, County Clerk