

SADDLE BUTTE ESTATES NO. 2

A SUBDIVISION IN THE SW 1/4 NE 1/4 & E 1/2 NW 1/4 SEC. 30, T. 26 S., R. 5 W., W. M.

SHANER ENGINEERING, INC.

FEBRUARY, 1978

State of Oregon  
County of Douglas

I, Bruce A. Shaner, being duly sworn, depose and say upon oath, that I am the surveyor who made the survey and prepared the final map of "Saddle Butte Estates No. 2" and that the foregoing is an exact copy of the map of Saddle Butte Estates No. 2.

*B A Shaner*  
Bruce A. Shaner  
Professional Land Surveyor

Subscribed and sworn to before me this 17th day of July, 1978.

*Clement D. Barlow*  
Notary Public, State of Oregon

My commission expires May 22, 1981.

Note:  
Restrictions and Covenants pertaining to this Subdivision are to be found in Instrument No. 78-10970, Book of Records, Douglas County, Oregon.

RIGHT OF WAY CURVE DATA

Letter	Δ	Radius	Length
A	247°58'32.5"	50.00	216.39
B	67°58'32.5"	30.00	35.59
C	64°52'07.5"	48.89	55.35
D	59°10'18.1"	57.17	59.04
E	90°00'00.0"	30.00	47.12
F	90°00'00.0"	19.55	30.71
G	90°00'00.0"	30.00	47.12
H	90°00'00.0"	30.00	47.12
J	55°57'34.4"	68.78	67.17

LONG CHORD

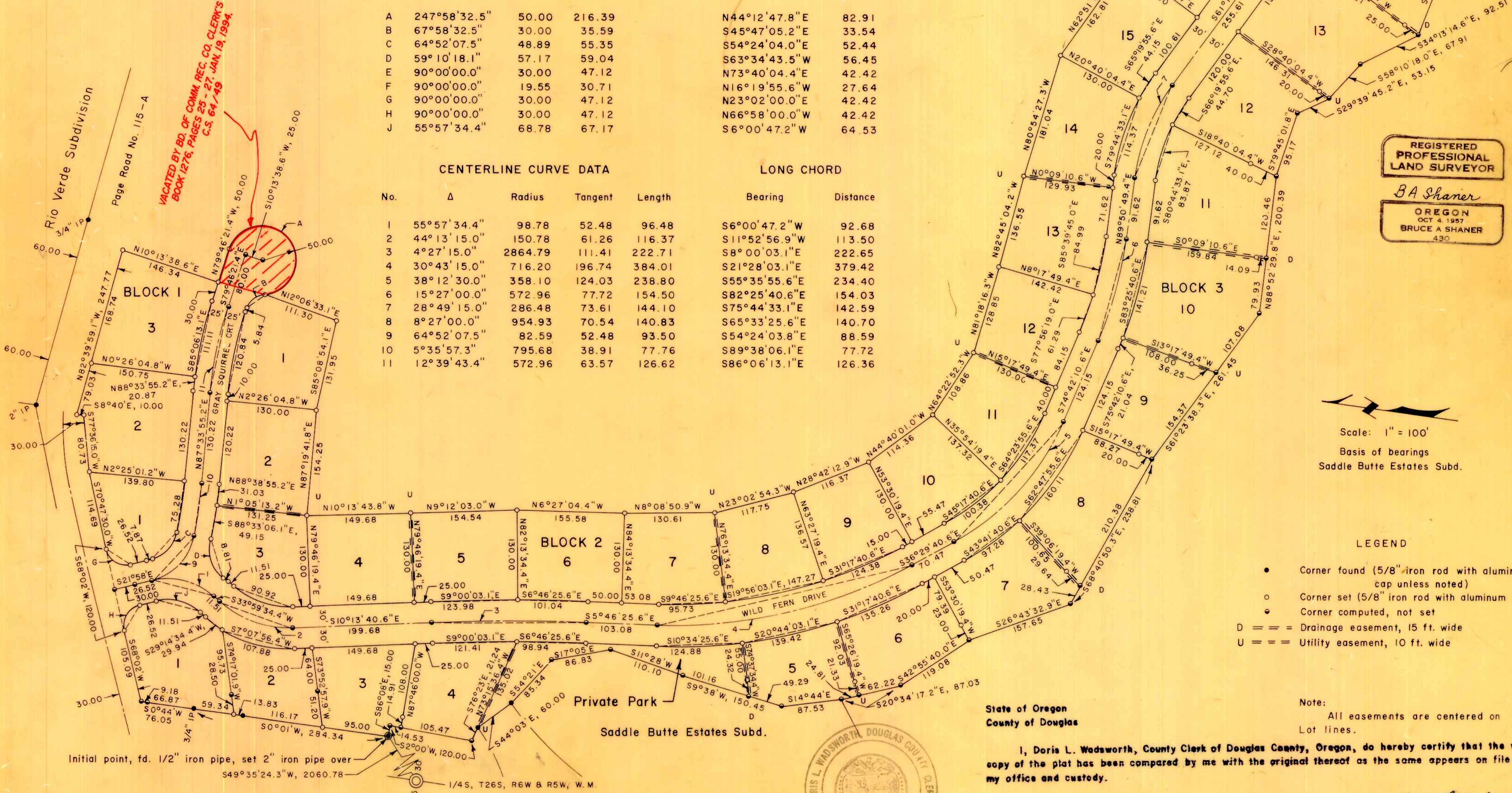
Bearing	Distance
N44°12'47.8"E	82.91
S45°47'05.2"E	33.54
S54°24'04.0"E	52.44
S63°34'43.5"W	56.45
N73°40'04.4"E	42.42
N16°19'55.6"W	27.64
N23°02'00.0"E	42.42
N66°58'00.0"W	42.42
S6°00'47.2"W	64.53

CENTERLINE CURVE DATA

No.	Δ	Radius	Tangent	Length
1	55°57'34.4"	98.78	52.48	96.48
2	44°13'15.0"	150.78	61.26	116.37
3	4°27'15.0"	2864.79	111.41	222.71
4	30°43'15.0"	716.20	196.74	384.01
5	38°12'30.0"	358.10	124.03	238.80
6	15°27'00.0"	572.96	77.72	154.50
7	28°49'15.0"	286.48	73.61	144.10
8	8°27'00.0"	954.93	70.54	140.83
9	64°52'07.5"	82.59	52.48	93.50
10	5°35'57.3"	795.68	38.91	77.76
11	12°39'43.4"	572.96	63.57	126.62

LONG CHORD

Bearing	Distance
S6°00'47.2"W	92.68
S11°52'56.9"W	113.50
S8°00'03.1"E	222.65
S21°28'03.1"E	379.42
S55°35'55.6"E	234.40
S82°25'40.6"E	154.03
S75°44'33.1"E	142.59
S65°33'25.6"E	140.70
S54°24'03.8"E	88.59
S89°38'06.1"E	77.72
S86°06'13.1"E	126.36



REGISTERED PROFESSIONAL LAND SURVEYOR  
*B A Shaner*  
OREGON  
OCT 4 1957  
BRUCE A SHANER  
430

Scale: 1" = 100'  
Basis of bearings  
Saddle Butte Estates Subd.

- LEGEND
- Corner found (5/8" iron rod with aluminum cap unless noted)
  - Corner set (5/8" iron rod with aluminum cap)
  - Corner computed, not set
  - D === Drainage easement, 15 ft. wide
  - U === Utility easement, 10 ft. wide

Note:  
All easements are centered on Lot lines.

State of Oregon  
County of Douglas

I, Doris L. Wadsworth, County Clerk of Douglas County, Oregon, do hereby certify that the within copy of the plat has been compared by me with the original thereof as the same appears on file in my office and custody.

Witness my hand and official seal this 2nd day of Aug., 1978. *Doris L. Wadsworth*  
County Clerk



VOL. 16 PAGE 14A

VOL. 16 PAGE 14A