

HILLCREST SUBDIVISION

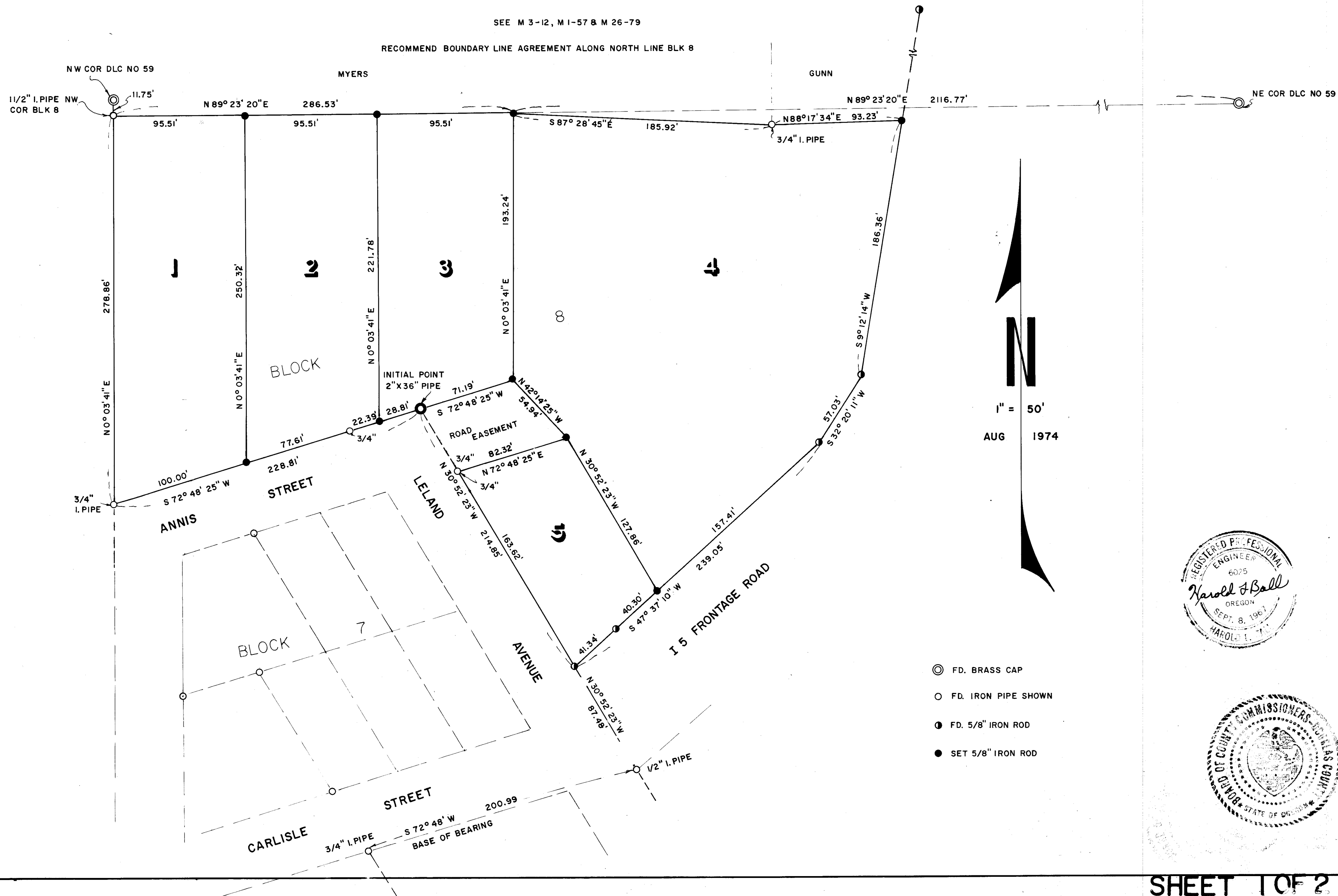
A SUBDIVISION OF BLOCK 8, ANDERSON'S 2nd ADDITION TO CANYONVILLE IN J. ROBERTS D.L.C. NO. 59, SECTION 27, TOWNSHIP 30 SOUTH, RANGE 5 WEST, WILLAMETTE MERIDIAN

V15P5B

VOL 15 PAGE 5

SEE M 3-12, M 1-57 & M 26-79

RECOMMEND BOUNDARY LINE AGREEMENT ALONG NORTH LINE BLK 8



VOL. 15 PAGE 5

V15P5B

SHEET 1 OF 2