

TRI-CITY TERRACE

IN SECTION 33, T 29 S, R 5 W, & SECTION 4, T 30 S, R 5 W, W.M.
DOUGLAS COUNTY, OREGON.

SCALE 1" = 100'

JANUARY, 1977.

CORNER CUTOFF DATA

1	R:15.0	A: 23.56	CH: 21.21	S44°19'28"E
2	R:15.0	A: 23.50	CH: 21.17	N45°33'20"E
3	R:15.0	A: 23.62	CH: 21.26	N44°26'41"W
4	R:15.0	A: 23.55	CH: 21.20	N44°17'32"W
5	R:15.0	A: 23.58	CH: 21.23	N45°42'28"E
6	R:15.0	A: 22.31	CH: 20.31	N83°51'29"W
7	R:15.0	A: 22.24	CH: 20.26	S4°20'22"E
8	R:15.0	A: 23.89	CH: 21.51	S46°29'25"W
9	R:15.0	A: 23.13	CH: 20.91	L43°30'35"W

CENTERLINE CURVE DATA

10	Δ: 64°43'47"	R: 100.0	L: 13.15	T: 63.50
11	Δ: 52°09'53"	R: 100.0	L: 91.00	T: 48.95
12	Δ: 61°32'51"	R: 100.0	L: 107.42	T: 59.65
13	Δ: 116°34'58"	R: 100.0	L: 203.48	T: 161.86

CHORDS AND BEARINGS

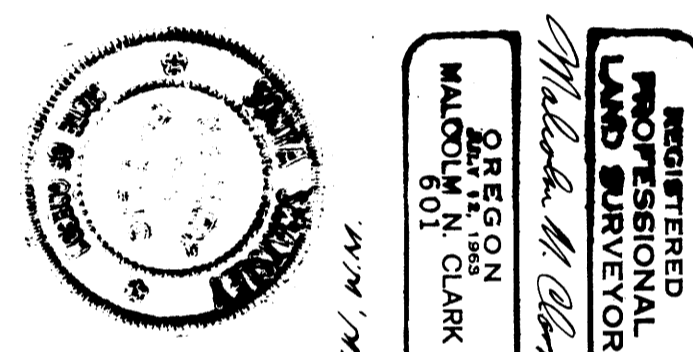
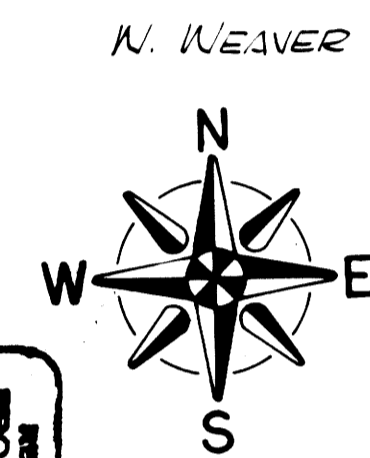
14	45.11	S80°02'26"W
15	49.70	S58°10'44"N
16	38.73	S37°47'53"W
17	76.75	N59°39'42"E
18	21.20	S24°01'22"W
19	50.00	S7°37'15"W
20	50.00	S15°27'11"E
21	50.00	S38°31'38"E
22	50.00	S61°36'04"E
23	31.67	S80°24'59"E
24	127.61	N27°24'13"W
25	90.48	N27°34'22"E
26	19.23	N59°59'15"E
27	75.03	N33°04'51"E
28	51.18	N54°09'50"E
29	66.86	N27°54'38"E
30	27.93	N6°51'02"E
31	62.20	S27°09'15"W
32	54.28	S25°54'58"N
33	29.86	S7°16'16"N
34	52.18	S67°20'11"E
35	80.06	N60°01'32"W
36	19.60	N83°11'55"W
37	21.89	S82°40'16"E
38	52.65	S65°29'21"E
39	40.72	S43°57'27"E
40	24.97	S28°51'07"E
41	40.73	S13°44'39"E
42	51.24	S7°27'39"W
43	20.92	S24°05'20"W
44	22.55	S34°03'47"N
45	51.44	N51°06'47"E
46	46.72	N73°45'34"E
47	12.87	N87°28'59"E

STATE OF OREGON)
COUNTY OF DOUGLAS) ss

I, Malcolm N. Clark, being duly sworn depose and say that I am the surveyor who surveyed the plat of Tri-City Terrace and that the annexed tracing is an exact copy of the final plat thereof.

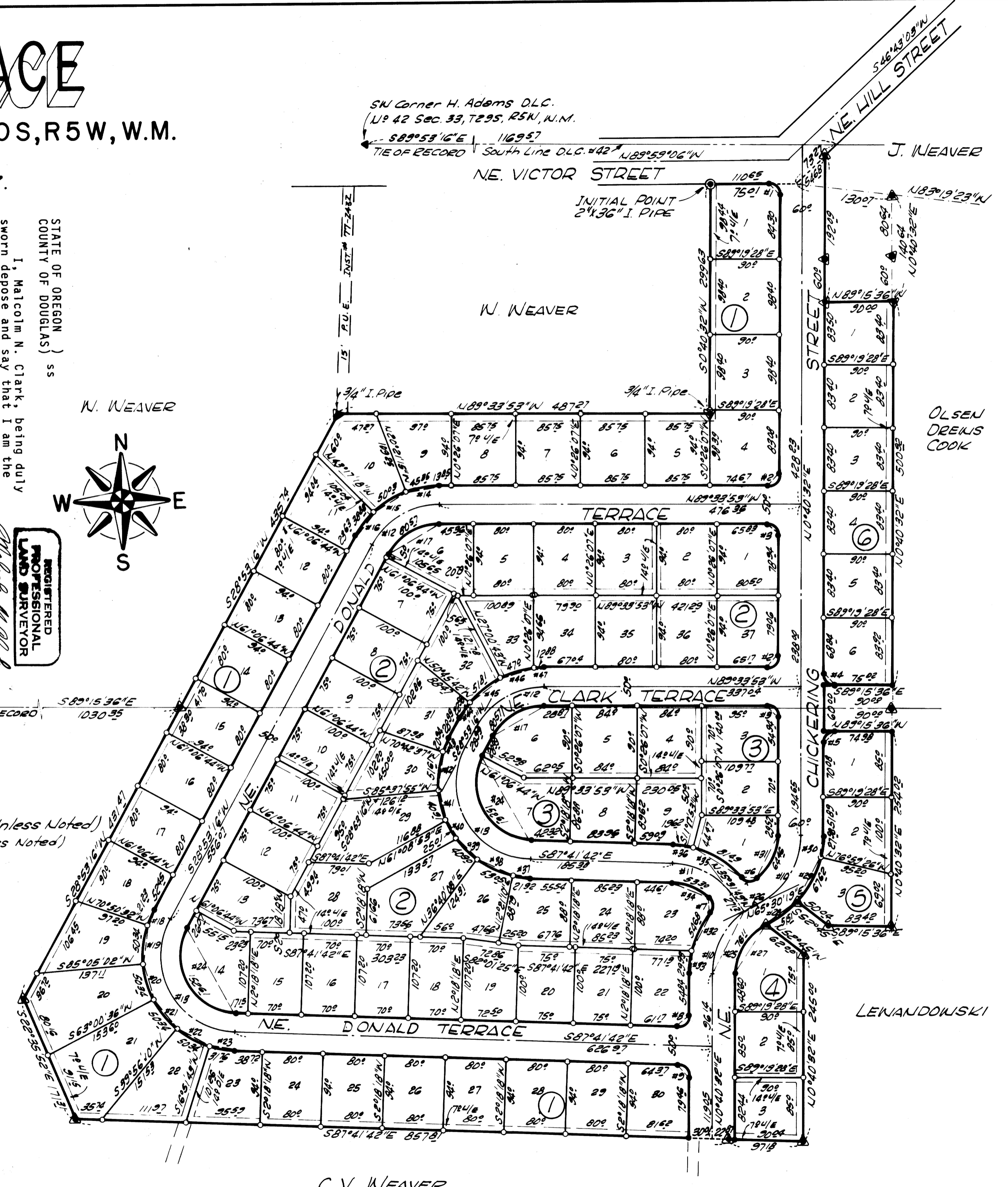
Malcolm N. Clark
Malcolm N. Clark
REGISTERED PROFESSIONAL LAND SURVEYOR
OREGON
JAN 11, 1968
MADOLN 601 CLARK

Subscribed and sworn before me this 13 day of May 1977.
Doris E. Wadsworth
MY COMMISSION EXPIRES 9/30/80



- ▲ Found 3/8" Iron Rod (Unless Noted)
- Set 3/8" Iron Rod (Unless Noted)
- Set 1/2" Iron Rod
- Initial Point
- ◆ D.L.C. Corner
- ◆ Section Corner
- ④ Block Numbers

BEARINGS BASED ON RM 2-56



STATE OF OREGON)
COUNTY OF DOUGLAS) s.s.

I, DORIS WADSWORTH, COUNTY CLERK OF DOUGLAS COUNTY, OREGON, DO HEREBY CERTIFY THAT THE WITHIN COPY OF PLAT HAS BEEN COMPARED BY ME WITH THE ORIGINAL THEREOF AND THAT IT IS AN EXACT COPY OF THE WHOLE THEREOF AS THE SAME APPEARS ON FILE IN MY OFFICE AND CUSTODY.

WITNESS MY HAND AND OFFICIAL SEAL THIS 13 DAY OF May, 1977.

Doris E. Wadsworth
COUNTY CLERK

NOTE: ALL UTILITY EASEMENTS ARE ALSO DRAINAGE EASEMENTS

ADDED TO PLAT FOR S-TRI-C, INC.
BY *Doris E. Wadsworth* PRESIDENT
SEE VOL. 66 PG. 350 DATE 12-21-77
REC. # 17-24592 TITLE

VOL. 15 PG. 59A

VOL. 15 PG. 59A