

PLAT OF SCOTT TERRACE

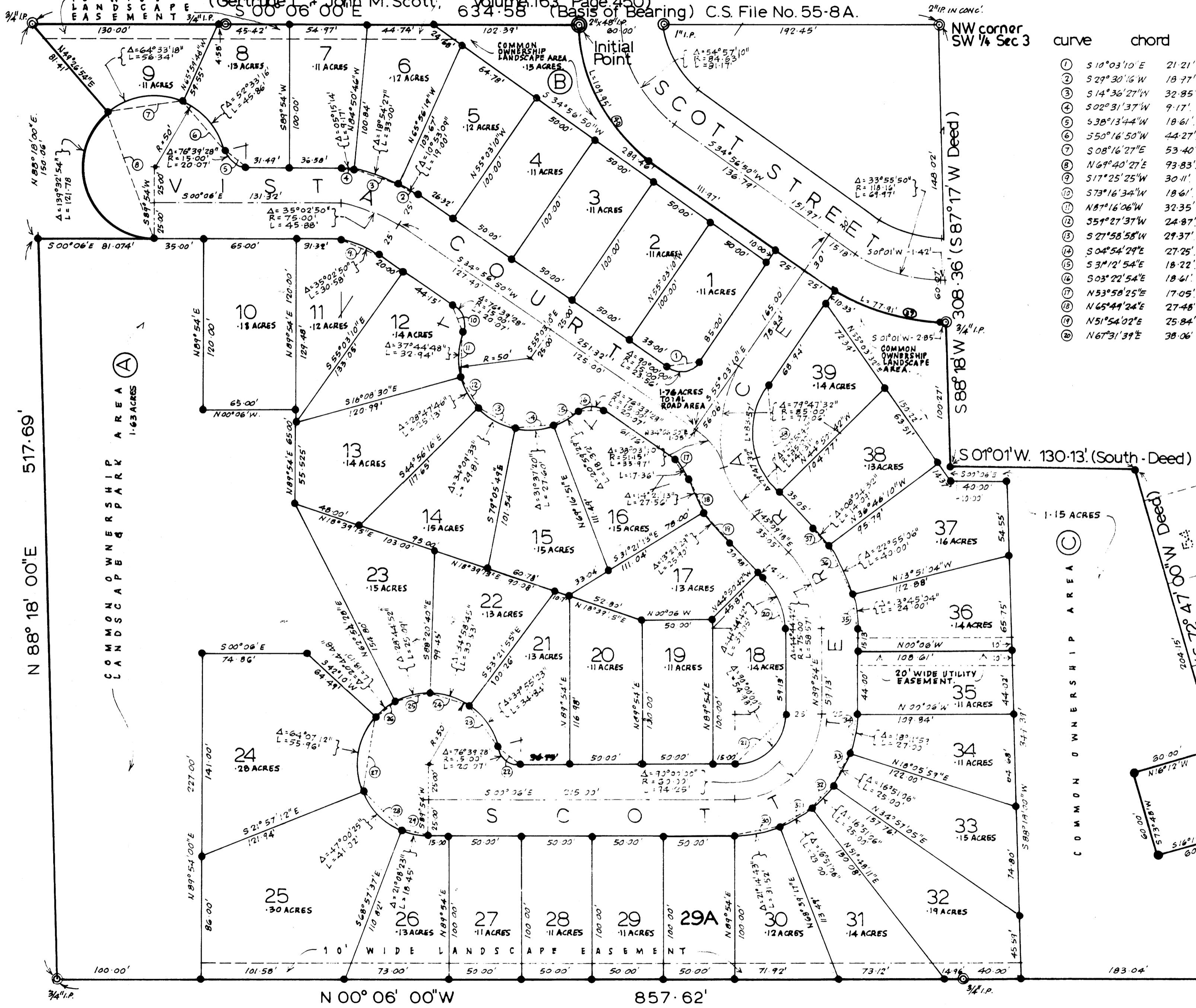
A PLANNED UNIT DEVELOPMENT

September 1976

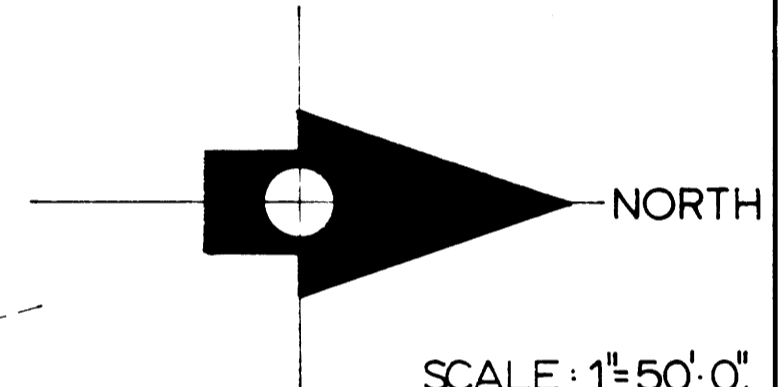
A PORTION OF THE WEST 1/2 OF SECTION 3, T22S, R12W, CITY OF REEDSPORT, OREGON.

SCALE: 1"=50' 0"

(Gertrude L. + John M. Scott, Volume 163, Page 450) 634-58 (Basis of Bearing) C.S. File No. 55-8A.



curve	chord	curve	chord
1	S 10° 03' 10" E 21.21'	21	S 45° 06' 00" E 49.50'
2	S 29° 30' 16" W 18.77'	22	S 30° 13' 44" W 18.61'
3	S 14° 36' 27" W 32.85'	23	S 56° 38' 58" W 34.13'
4	S 02° 31' 37" W 9.17'	24	S 19° 08' 42" W 30.05'
5	S 38° 13' 44" W 18.61'	25	S 12° 43' 06" E 24.82'
6	S 50° 16' 50" W 44.27'	26	S 37° 27' 46" E 18.00'
7	S 08° 16' 27" E 53.40'	27	S 79° 53' 36" E 53.08'
8	N 69° 40' 27" E 73.83'	28	N 44° 32' 36" E 39.88'
9	S 17° 25' 25" W 30.11'	29	N 10° 28' 12" E 18.34'
10	S 73° 16' 34" W 18.61'	30	S 10° 43' 22" E 31.34'
11	N 87° 16' 06" W 32.35'	31	S 29° 46' 16" E 24.91'
12	S 51° 27' 37" W 24.87'	32	S 46° 37' 22" E 24.91'
13	S 27° 58' 58" W 24.37'	33	S 63° 28' 28" E 24.91'
14	S 04° 54' 29" E 27.25'	34	S 81° 00' 00" E 26.89'
15	S 31° 12' 54" E 18.22'	35	N 83° 01' 28" E 23.94'
16	S 03° 22' 54" E 18.41'	36	N 64° 41' 23" E 39.73'
17	N 53° 58' 25" E 17.05'	37	N 49° 11' 34" E 14.08'
18	N 65° 49' 24" E 27.48'	38	N 85° 03' 04" E 76.91'
19	N 51° 54' 02" E 25.84'	39	S 16° 04' 55" W 77.02'
20	N 67° 31' 39" E 38.06'	40	S 62° 25' 25" W 105.78'



- KEY**
- ⊙ Initial Point (2 1/4" I.P.)
 - ⊙ Found Monument (SIZES AS NOTED)
 - Set Monument (5/8" I.R.)

Edward W. Kelly

(Grice, Unger, Weigman, Lewis, Ref No 75/13658)

(Ernest + Ruby Selle Ref No. 239/190948.)

VOL. 15 PAGE 52A

VOL. 15 PAGE 52A