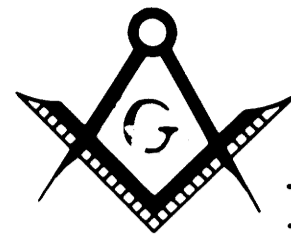


MASONIC CEMETERY

PLAT III



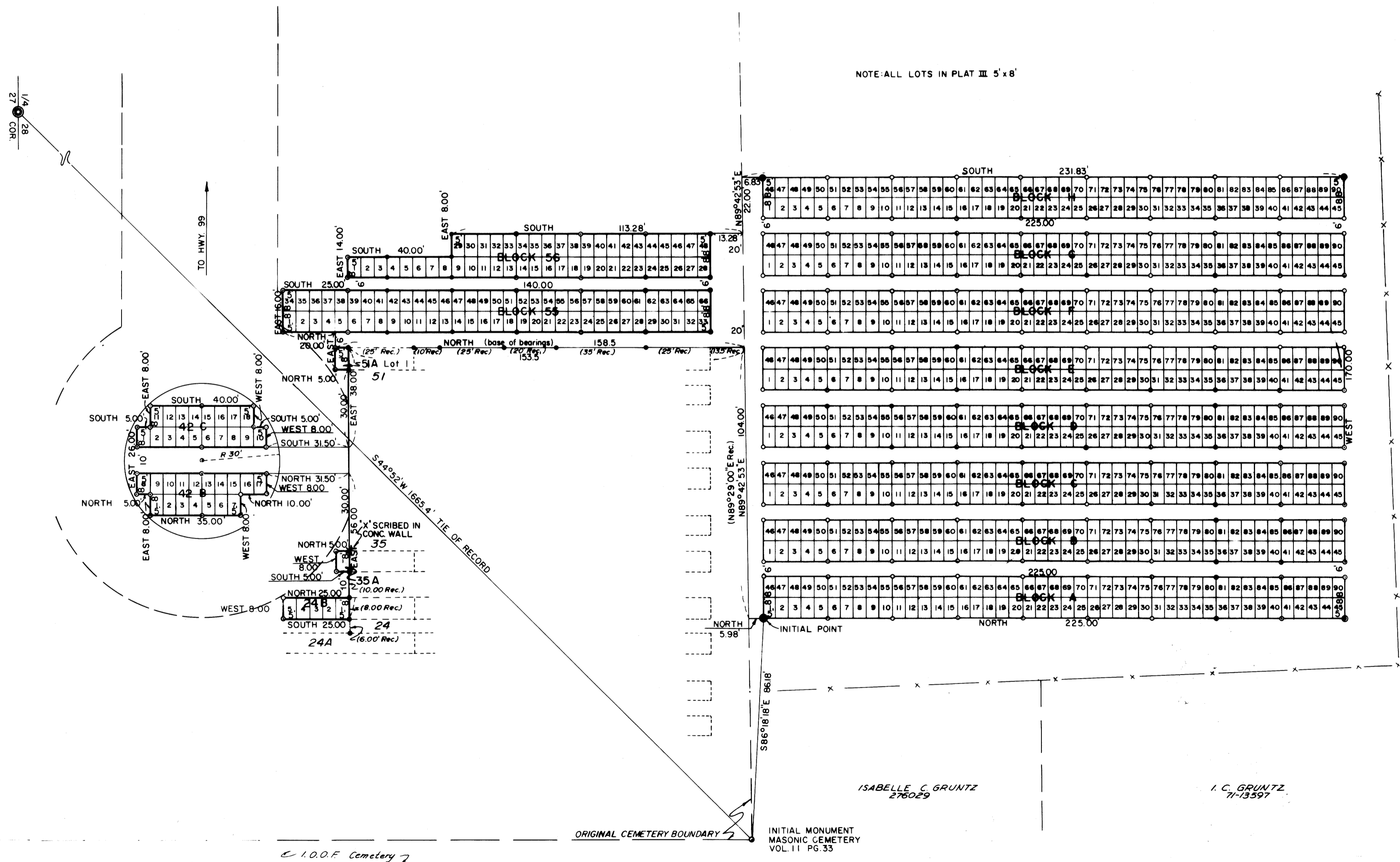
A SUBDIVISION OF A PORTION OF THE 2ND SUB. OF THE MASONIC CEMETERY, SOUTH UMPQUA LODGE NO. 72, AND AN ADDN. TO SAME. IN S27 T30S R5W W.M. MARCH, 1976 SCALE 1"=30'

BEARINGS BASED ON WEST LINE OF BLOCKS 51, 52, 52A, 53, 53A, 54, 54A MASONIC CEMETERY VOL. 11 PG. 33, NORTH

SYMBOLS

- ⊙ SET 1" IRON PIPE
- SET 1/2" IRON ROD
- SET 2" IRON PIPE
- FOUND 3/4" IRON PIPE
- FOUND 1 1/2" IRON PIPE

NOTE: ALL LOTS IN PLAT III 5' x 8'



© I.O.O.F. Cemetery

INITIAL MONUMENT
MASONIC CEMETERY
VOL. 11 PG. 33

ISABELLE C. GRUNTZ
275029

I. C. GRUNTZ
71-73597