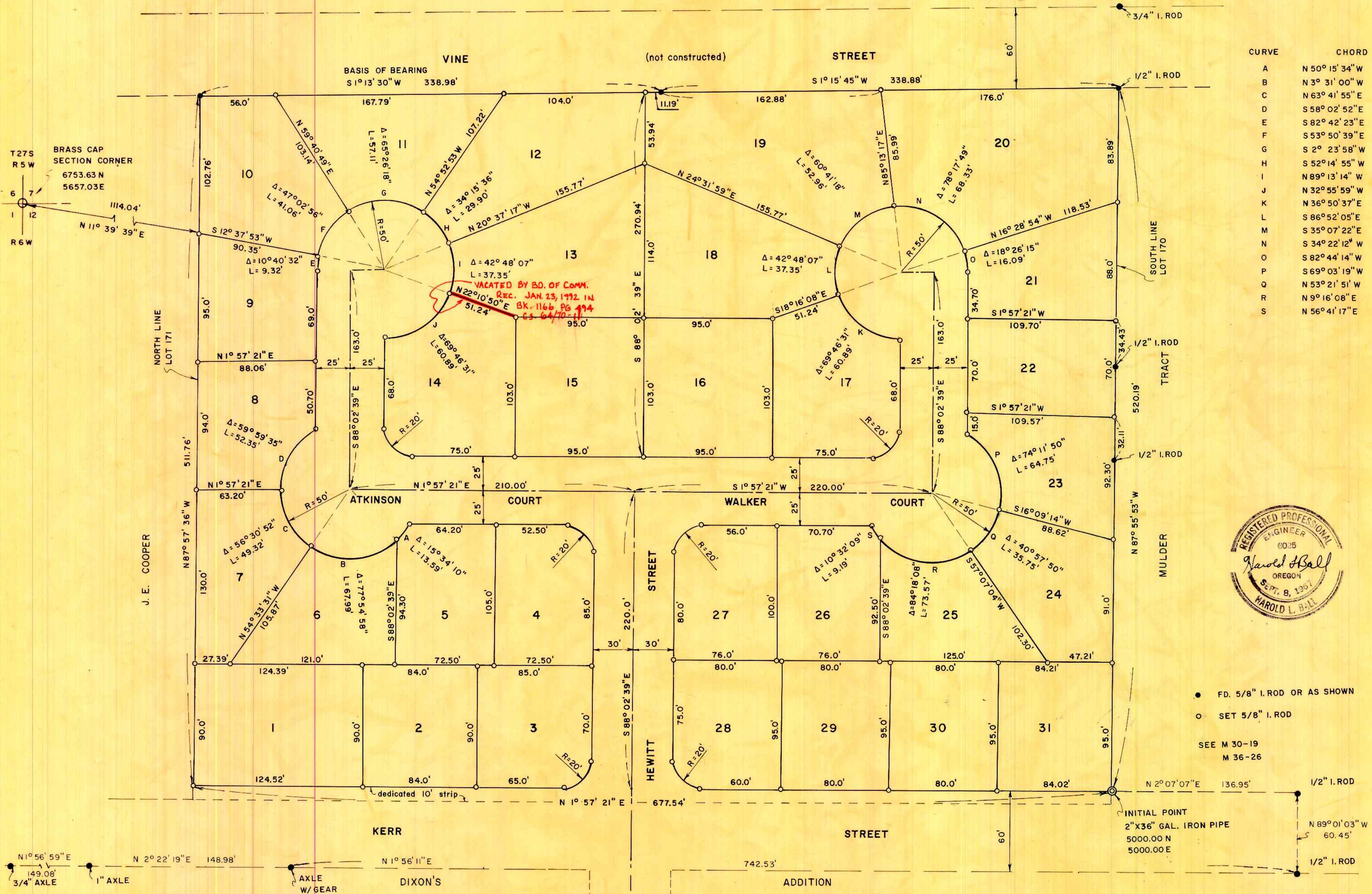


HEWITT HEIGHTS

A SUBDIVISION OF PART OF LOTS 170 AND 171, TRACT I, PLAT I, OF ROSEBURG ORCHARD CO., IN SEC. 12, T27S, R6W, W.M.



SCALE 1" = 50'



CURVE	CHORD	
A	N 50° 15' 34" W	13.55'
B	N 3° 31' 00" W	62.88'
C	N 63° 41' 55" E	47.34'
D	S 58° 02' 52" E	49.99'
E	S 82° 42' 23" E	9.30'
F	S 53° 50' 39" E	39.91'
G	S 2° 23' 58" W	54.05'
H	S 52° 14' 55" W	29.45'
I	N 89° 13' 14" W	36.49'
J	N 32° 55' 59" W	57.19'
K	N 36° 50' 37" E	57.20'
L	S 86° 52' 05" E	36.49'
M	S 35° 07' 22" E	50.52'
N	S 34° 22' 12" W	63.13'
O	S 82° 44' 14" W	16.02'
P	S 69° 03' 19" W	60.32'
Q	N 53° 21' 51" W	34.99'
R	N 9° 16' 08" E	67.11'
S	N 56° 41' 17" E	9.18'



● FD. 5/8" I. ROD OR AS SHOWN
 ○ SET 5/8" I. ROD
 SEE M 30-19
 M 36-26

INITIAL POINT
 2" X 36" GAL. IRON PIPE
 5000.00 N
 5000.00 E

VOL. 15 PAGE 31B

VOL. 15 PAGE 31B