

FOREST HAVEN 1ST ADDITION SECTION 12, T.27S., R.2W., W.M.

APRIL 1974

SCALE: 1"=100'

DEDICATION

KNOW ALL MEN BY THESE PRESENTS that Calvin D. Willis and Ramona D. Willis are owners of the land shown and described on the annexed plat, and that we have caused the same to be surveyed and to be platted by the name of "Forest Haven, First Addition" and that we hereby dedicate to use of the public forever the streets shown hereon.

Calvin D. Willis Ramona D. Willis
Calvin D. Willis Ramona D. Willis

ACKNOWLEDGMENT

STATE OF OREGON)
COUNTY OF DOUGLAS) ss

On the 15th day of April, 1974, before me appeared Calvin D. Willis and Ramona D. Willis to me known to be the persons described in and who executed the foregoing dedication, who being duly sworn, did say that they executed the same for the purpose set forth therein.

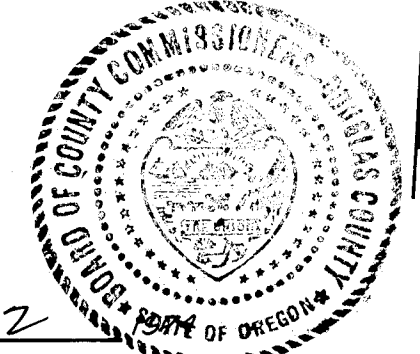
Paul M. Newcombe
Notary Public, State of Oregon

My commission expires Dec. 17, 1975.

FILED

MAY 22

G. D. Myllesbeck
County Clerk



LEGEND

- --- Set 2" iron pipe
- --- Set 5/8" iron rod
- --- Set 1/2" iron rod
- --- not set

APPROVALS

BY ORDER OF COUNTY BOARD OF COMMISSIONERS

Approved 21 MAY 1974
Ray E. Dorn
Chairman

Approved 21 MAY 1974
William H. ...
Commissioner

Approved _____ 197

Commissioner

Approved 16 May 1974
Francis L. Ingram
County Surveyor

Approved MAY 21 1974
Edward W. ...
County Assessor

Approved James H. Gray 1974
13 May 1974
County Health Officer

BY ORDER OF COUNTY PLANNING COMMISSION

Approved 9 May 1974
Dudley ...
President

Approved May 9 1974
Sara L. ...
Secretary



BLOCK 4
(40.14 ac.)

STATE OF OREGON)
COUNTY OF DOUGLAS) ss

I, G. D. Myllesbeck, County Clerk of Douglas County, Oregon, do hereby certify that the within copy of plat has been compared by me with the original thereof and that it is an exact copy of the whole thereof as the same appears on file in my office and custody.

Witness my hand and official seal this _____ day of _____, 197 .

County Clerk

STATE OF OREGON)
COUNTY OF DOUGLAS) ss

I, Glenn S. Baughman, being duly sworn depose and say that I am the surveyor who surveyed the plat of "Forest Haven, First Addition" and that the annexed tracing is an exact copy of the final plat thereof.

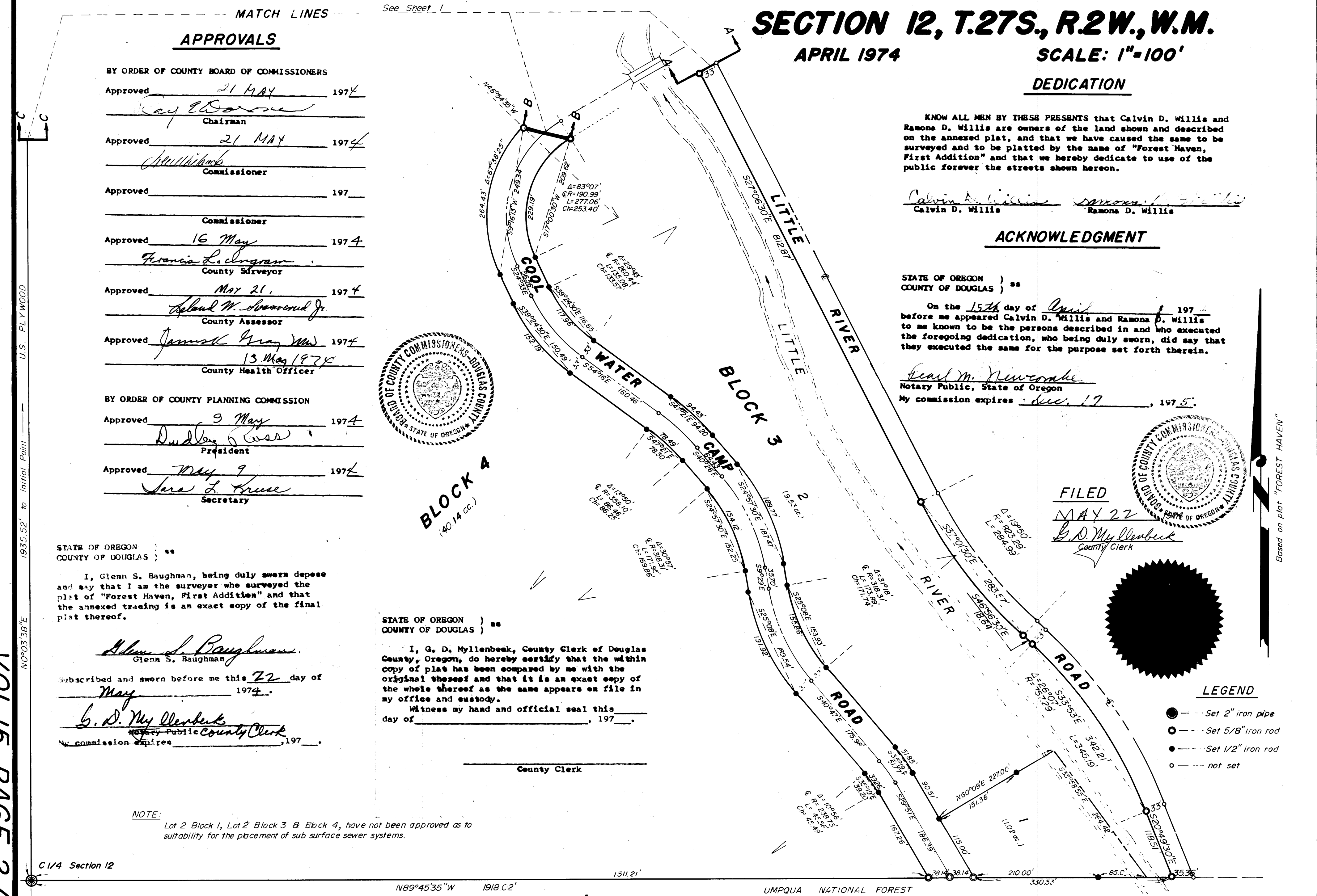
Glenn S. Baughman
Glenn S. Baughman

Subscribed and sworn before me this 22 day of May, 1974.

G. D. Myllesbeck
County Clerk
My commission expires _____, 197 .

NOTE:

Lot 2 Block 1, Lot 2 Block 3 & Block 4, have not been approved as to suitability for the placement of sub surface sewer systems.



VOL. 15 PAGE 2 A

VOL. 15 PAGE 2 A