

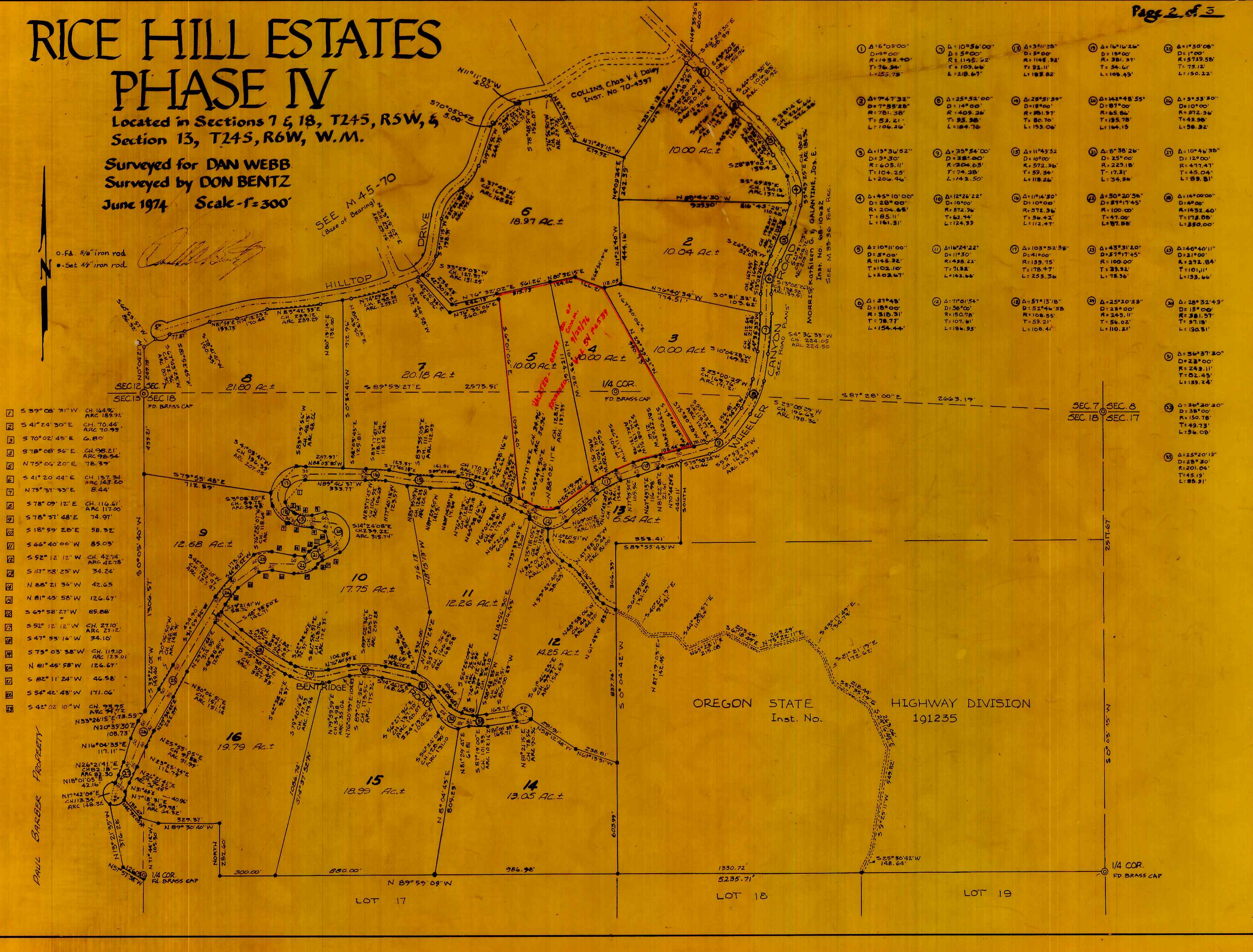
RICE HILL ESTATES PHASE IV

Located in Sections 7 & 18, T24S, R5W, &
Section 13, T24S, R6W, W.M.

Surveyed for DAN WEBB
Surveyed by DON BENTZ

June 1974 Scale - f=300'

o-f.a. 5/8" iron rod
• Set 3/8" iron rod



- 1 Δ=6°09'00" D=49'00" R=1432.40' T=76.34' L=155.75'
- 2 Δ=7°47'32" D=14'00" R=781.38' T=53.21' L=106.26'
- 3 Δ=13°36'52" D=9'30" R=605.11' T=104.25' L=206.46'
- 4 Δ=45°10'00" D=28'00" R=204.65' T=85.11' L=161.31'
- 5 Δ=10°11'00" D=5'00" R=1146.32' T=102.10' L=202.67'
- 6 Δ=21°48' D=18'00" R=318.31' T=78.77' L=154.44'
- 7 Δ=10°56'00" D=5'00" R=1145.52' T=109.66' L=218.67'
- 8 Δ=25°52'00" D=14'00" R=409.26' T=93.38' L=184.76'
- 9 Δ=39°54'00" D=28'00" R=204.65' T=74.25' L=142.50'
- 10 Δ=12°26'22" D=10'00" R=872.96' T=62.74' L=124.33'
- 11 Δ=16°15'4" D=11'30" R=107.78' T=107.81' L=186.95'
- 12 Δ=71°01'54" D=26'00" R=150.78' T=107.81' L=186.95'
- 13 Δ=57°31'18" D=52'46" R=572.36' T=56.42' L=112.47'
- 14 Δ=25°20'53" D=23'00" R=572.36' T=56.42' L=112.47'
- 15 Δ=28°32'43" D=15'00" R=381.97' T=43.98' L=89.81'
- 16 Δ=16°16'26" D=18'00" R=1145.52' T=92.11' L=183.82'
- 17 Δ=28°51'34" D=18'00" R=801.37' T=80.70' L=153.06'
- 18 Δ=142°48'55" D=87'00" R=65.86' T=135.78' L=164.15'
- 19 Δ=3°53'30" D=1'00" R=572.36' T=43.98' L=89.81'
- 20 Δ=10°46'38" D=12'00" R=471.47' T=45.04' L=89.81'
- 21 Δ=14°00'00" D=4'00" R=1432.40' T=178.88' L=350.00'
- 22 Δ=43°31'20" D=25'00" R=100.00' T=35.32' L=78.36'
- 23 Δ=40°40'11" D=21'00" R=471.47' T=43.98' L=89.81'
- 24 Δ=36°37'20" D=23'00" R=249.11' T=49.73' L=96.08'
- 25 Δ=25°20'53" D=23'00" R=572.36' T=56.42' L=112.47'
- 26 Δ=25°20'53" D=23'00" R=572.36' T=56.42' L=112.47'
- 27 Δ=25°20'53" D=23'00" R=572.36' T=56.42' L=112.47'
- 28 Δ=25°20'53" D=23'00" R=572.36' T=56.42' L=112.47'
- 29 Δ=25°20'53" D=23'00" R=572.36' T=56.42' L=112.47'
- 30 Δ=25°20'53" D=23'00" R=572.36' T=56.42' L=112.47'

- 1 S 39°08'31"W CH 164.92' ARC 189.92'
- 2 S 41°24'30"E CH 70.44' ARC 70.99'
- 3 S 70°02'45"E 6.80'
- 4 S 78°08'56"E CH 98.21' ARC 98.54'
- 5 N 75°04'20"E 78.33'
- 6 S 41°20'44"E CH 137.34' ARC 143.20'
- 7 N 73°31'33"E 8.44'
- 8 S 78°09'12"E CH 114.61' ARC 117.00'
- 9 S 78°31'48"E 74.97'
- 10 S 18°59'28"E 38.32'
- 11 S 66°40'00"W 85.03'
- 12 S 52°12'12"W CH 42.74' ARC 42.78'
- 13 S 47°38'25"W 34.24'
- 14 N 88°21'34"W 42.63'
- 15 N 81°45'58"W 126.47'
- 16 S 69°58'27"W 85.88'
- 17 S 52°12'12"W CH 27.10' ARC 27.12'
- 18 S 47°53'16"W 34.10'
- 19 S 75°03'38"W CH 119.10' ARC 123.01'
- 20 N 81°45'58"W 126.47'
- 21 S 82°11'24"W 46.58'
- 22 S 54°42'48"W 171.06'
- 23 S 42°02'10"W CH 93.95' ARC 94.72'
- 24 N 55°26'15"E 73.59'
- 25 N 20°39'30"E 108.73'
- 26 N 16°04'33"E 117.11'
- 27 N 26°21'41"E CH 82.15' ARC 82.30'
- 28 N 18°01'05"E 42.16'
- 29 N 17°42'04"E CH 113.34' ARC 148.32'
- 30 N 71°44'14"W 105.50'

OREGON STATE
Inst. No. 191235
HIGHWAY DIVISION

PAUL BARBER PROPERTY