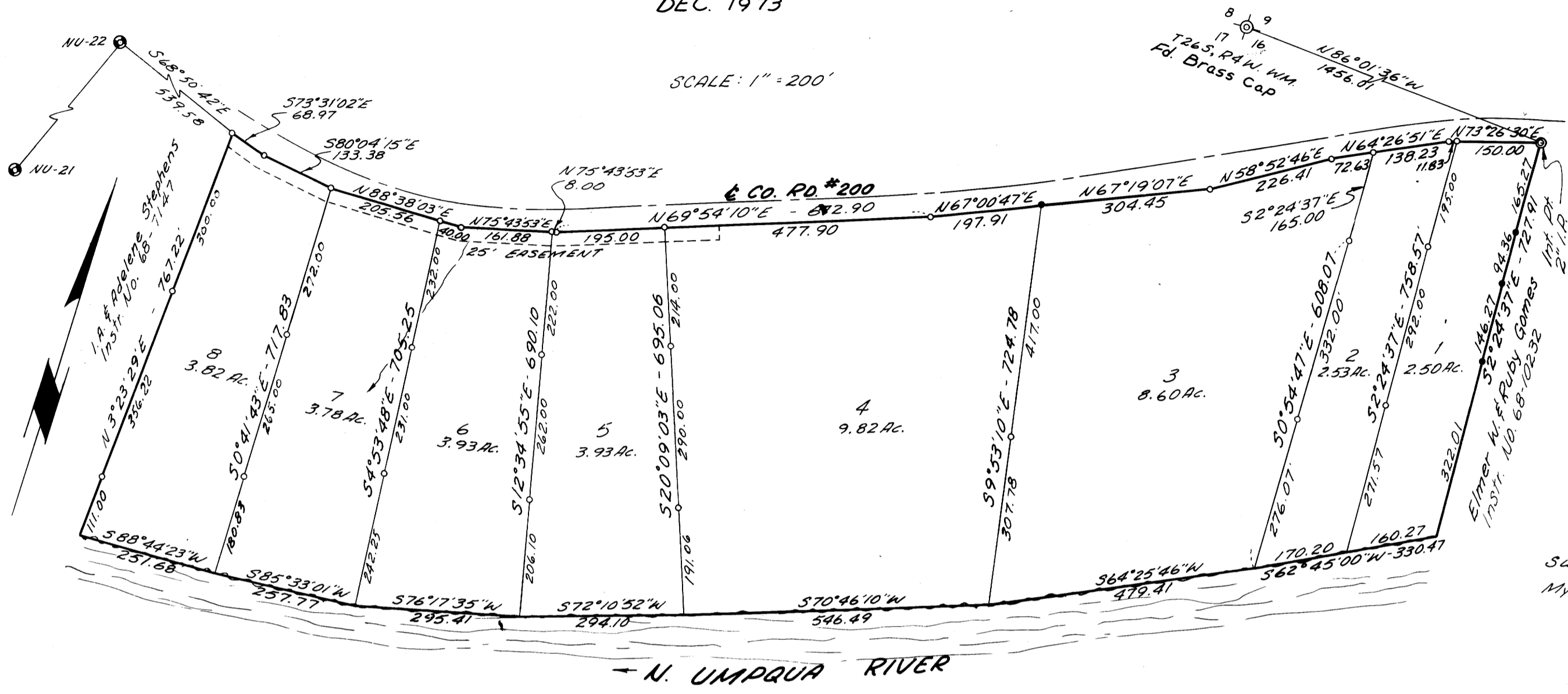


# HERMOSA VISTA SUBDIVISION

IN SECTIONS 16 & 17, T26S, R4W, W. M.  
 W.S. BARNES - REG. PROF. ENGINEER - ORE. NO. 2128  
 DEC. 1973

## CERTIFICATE OF SURVEYOR



STATE OF OREGON } ss  
 COUNTY OF DOUGLAS }

I, William S. Barnes, being first duly sworn, depose and say that I have correctly surveyed and marked with proper monuments the lands shown on the annexed plat, of which the following is a true and correct description:

Beginning at the Initial Point, a 2" x 30" I.P. set in the southerly R/W line of County Road No. 200 from which the Sec. Cor. common to Sec's. 8, 9, 16 & 17, T26S, R4W, W.M. bears N86°01'36"W 1456.01', said beginning point being at the northwest corner of the Elmer W. and Ruby Barnes property as described in Instr. No. 68-10232 of Douglas County records, thence S2°24'37"E along the westerly line of said Barnes property 727.91' to a point on the north bank of the North Umpqua River, thence downstream along said river bank on the following courses: S62°45'00"W 330.47', S64°25'46"W 479.41', S70°46'10"W 546.49', S72°10'52"W 294.10', S76°17'35"W 295.41', S85°33'01"W 257.77' and S88°44'23"W 251.68', thence leaving said river bank and running N3°23'29"E 767.22' to a 3/4" iron rod on the southerly R/W line of County Road No. 200, thence along said R/W line on the following courses: S73°31'02"E 68.97', S80°04'15"E 133.38', N88°38'03"E 245.56', N75°43'53"E 169.88', N69°54'10"E 672.90', N67°00'47"E 197.91', N67°19'07"E 304.45', N58°52'46"E 226.41', N64°26'51"E 210.86 and N73°26'30"E 161.83' to the point of beginning, containing 38.91 acres, more or less, all in Sec's. 16 and 17, T26S, R4W, W.M., Douglas County, Oregon.

William S. Barnes  
 William S. Barnes  
 Reg. Prof. Engineer

Subscribed and sworn to before me this 24<sup>th</sup> day of December, 1973,  
 My commission expires on the 11<sup>th</sup> day of August, 1976

Fred N. Serran  
 Notary Public

### APPROVALS

By Order of County Planning Comm. Approved December 27, 1973  
William C. Sells  
 Chairman  
Sara L. Kruse  
 Secretary

By Order of County Board of Commissioners. Approved December 27, 1973  
Ed Sells  
 Chairman  
 Approved December 27, 1973  
Ray L. Serran  
 Commissioner  
 Approved 28 Dec., 1973  
Francis L. Ingram  
 County Surveyor  
 Approved December 31, 1973  
Richard W. Hammond Jr.  
 County Assessor  
 Approved 28 December, 1973  
James K. Gray  
 County Health Officer

FILED  
January 2, 1974  
G. D. Myllenberg  
 County Clerk

STATE OF OREGON } ss  
 COUNTY OF DOUGLAS }

I, G.D. Myllenberg, County Clerk of Douglas County, do hereby certify that the within copy of plat has been compared by me with the original thereof and that it is an exact copy of the whole thereof as the same appears on file in my office and custody.

Witness my hand and official seal this 26<sup>th</sup> day of December, 1973.

G. D. Myllenberg  
 County Clerk

STATE OF OREGON } ss  
 COUNTY OF DOUGLAS }

I, W.S. Barnes, being first duly sworn, depose and say that I am the surveyor who surveyed the plat of HERMOSA VISTA and that the annexed tracing is an exact copy of the final plat thereof.

W. S. Barnes  
 W. S. Barnes

Subscribed and sworn to before me this 26 day of December, 1973

G. D. Myllenberg  
 County Clerk

### DEDICATION

Know all men by these presence that we, I.A. & Adelaide Stephens, husband and wife, owners of the lands represented and described on the annexed plat, have caused the same to be surveyed and platted by the name of "HERMOSA VISTA SUBDIVISION".

J. A. Stephens  
 I. A. Stephens  
Adelene Stephens  
 Adelene Stephens

### ACKNOWLEDGEMENT

STATE OF OREGON } ss  
 COUNTY OF DOUGLAS }

On the \_\_\_ day of \_\_\_, 197, before me appeared I.A. Stephens and Adelene Stephens, husband and wife, to me personally known, who being duly sworn, did say that they are the lawful owners of the lands delineated on the annexed plat and that they do hereby acknowledge that they signed the accompanying dedication as their free and voluntary act and deed.

In testimony whereof I have hereunto set my hand and affixed my official seal this day and year first above written.

Subscribed and sworn to before me this 24<sup>th</sup> day of December, 1973.  
 My commission expires on the 11<sup>th</sup> day of August, 1976

Fred N. Serran  
 Notary Public