

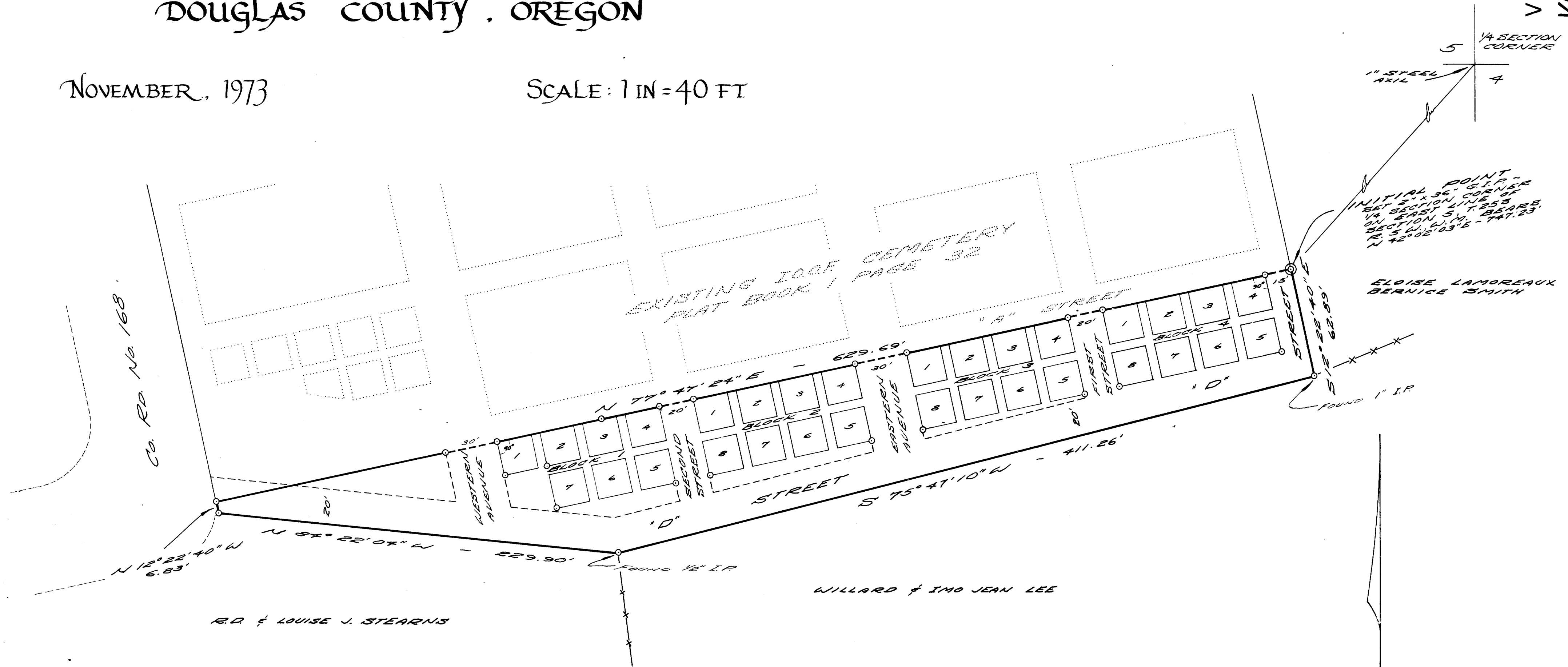
CEDAR HILL CEMETERY PLAT 2

IN SECTION 5 T 25 S R 5 W., W.M.
DOUGLAS COUNTY, OREGON

NOVEMBER, 1973

SCALE: 1 IN = 40 FT

V14P50B
VOL. 14 PAGE 50



Co. Rd. No. 168

EXISTING 100' CEMETERY
PLAT BOOK 1

1/4 SECTION CORNER
5
4
1\"/>

INITIAL POINT -
S.I.P. -
SET 2\"/>

ELOISE LAMOREAUX
BERNICE SMITH

WILLARD & IMO JEAN LEE

R.D. & LOUISE J. STEARNS

STATE OF OREGON } S.S.
COUNTY OF DOUGLAS } S.S.
I, R.E. SOBEL, BEING DULY SWORN,
DEPOSE AND SAY UPON OATH, THAT I
AM THE SURVEYOR WHO MADE THE
SURVEY AND PREPARED THE FINAL MAP
OF "CEDAR HILL CEMETERY PLAT 2" AND
THE FOREGOING TIERING IS AN EXACT
COPY OF THE MAP OF "CEDAR HILL
CEMETERY PLAT 2"

R.E. Sobel
REGISTERED LAND SURVEYOR

SUBSCRIBED AND SWORN TO BEFORE
ME THIS 11 DAY OF JANUARY, 1973

S.D. Myllesbeck
COUNTY CLERK

STATE OF OREGON } S.S.
COUNTY OF DOUGLAS } S.S.
I, G.D. MYLLESBECK, COUNTY
CLERK OF DOUGLAS COUNTY, OREGON,
DO HEREBY CERTIFY THAT THE WITHIN
COPY OF PLAT HAS BEEN BY ME COMPARED
WITH THE ORIGINAL THEREOF AND THAT IT
IS AN EXACT COPY OF THE WHOLE THEREOF
OR AS THE SAME APPEARS ON FILE IN
MY OFFICE AND CUSTODY.

S.D. Myllesbeck
COUNTY CLERK

WITNESS MY HAND AND OFFICIAL
SEAL THIS 11 DAY OF JANUARY, 1973

NOTE:
LOTS ARE 20 FT SQUARE; ALLEYS BETWEEN
LOTS ARE FIVE FEET WIDE; BLOCKS ARE 35 FT
EAST AND WEST, AND 45 FT NORTH AND SOUTH;
THE MONUMENTS INDICATED ON THE ANNEXED
PLAT AT BLOCK CORNERS AND ON THE BOUNDARY
OF THE CEMETERY ARE 3/8\"/>



V14P50B
VOL. 14 PAGE 50