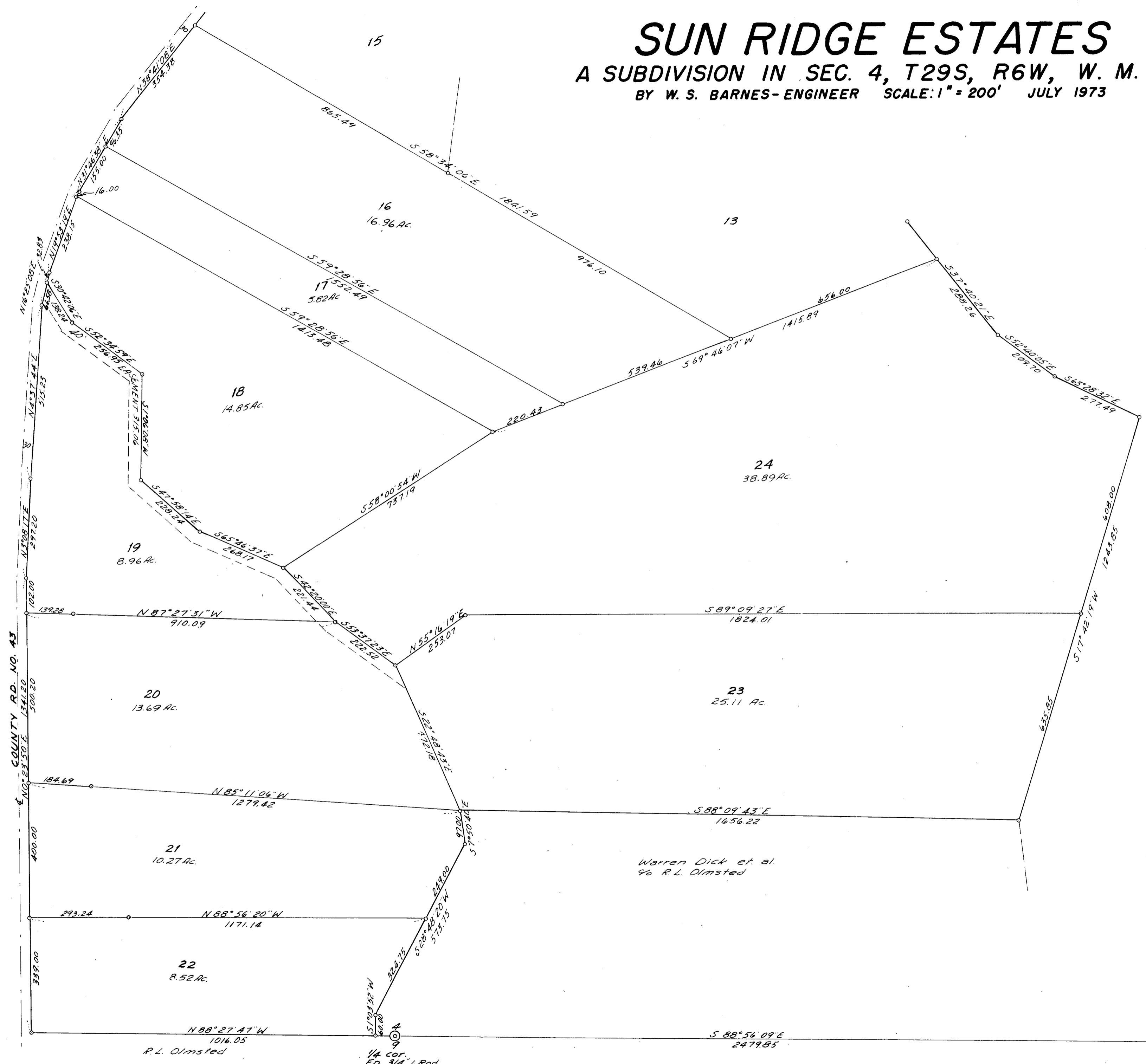


SUN RIDGE ESTATES

A SUBDIVISION IN SEC. 4, T29S, R6W, W. M.
BY W. S. BARNES-ENGINEER SCALE: 1" = 200' JULY 1973

VOL. 14 PAGE 41



VOL 14 PAGE 41

4 3 9 10 Fd. Brass Cap. T29S, R6W.