

# BARNES SUBDIVISION

IN THE  
NE 1/4 SEC. 19, T. 25 S., R. 5 W., W.M.

SUTHERLIN, OREGON

MARCH, 1972

*Donald R. Stone*  
DONALD R. STONE  
NOTARY PUBLIC - OREGON  
My Commission Expires 7-25-75

I, MALCOLM N. CLARK, BEING DULY SWORN, DEPOSE AND SAY THIS IS A TRUE AND EXACT COPY OF THE PLAT OF BARNES SUBDIVISION IN SEC. 19, T. 25 S., R. 5 W., W.M., DOUGLAS CO., OREGON

*Malcolm N. Clark*

SUBSCRIBED AND SWORN TO BEFORE ME THIS 19<sup>th</sup> DAY OF APRIL, 1972.

PREPARED BY  
GREEN EMPIRE, INC.  
OAKRIDGE, OREGON

## DESCRIPTION

BEGINNING AT A POINT THAT BEARS N 43°50' W A DISTANCE OF 387.1 FEET FROM THE NE CORNER OF THE JOSEPH HOLMAN D.L.C. No. 37, T. 25 S., R. 5 W., W.M., SAID POINT BEING THE SW CORNER LOT 10 BLOCK 2 PLAT 'O' OF THE SUTHERLIN LAND & WATER CO., ALSO BEING THE INITIAL POINT OF HOLIDAY HOMESITES, THENCE N 12°56' W A DISTANCE OF 925.00 FEET, THENCE N 77°04' E A DISTANCE OF 300.04 FEET, THENCE S 12°56' E A DISTANCE OF 925.00 FEET, THENCE S 77°04' W A DISTANCE OF 300.04 FEET TO THE POINT OF BEGINNING ALL IN SUTHERLIN, DOUGLAS COUNTY, OREGON.

## DEDICATION

KNOW ALL MEN THAT EDMUND A. BARNES AND LETHA BARNES, HUSBAND & WIFE, ARE THE OWNERS OF THE ABOVE DESCRIBED PROPERTY AND THAT THEY DO HEREBY LAYOUT AND SUBDIVIDE THE SAME AS SHOWN HEREON AND THAT THEY DO HEREBY DEDICATE TO THE PUBLIC FOREVER ALL STREETS AS SHOWN ON THIS PLAT.

*Edmund A. Barnes*      *Letha Barnes*

SUBSCRIBED & SWORN TO BEFORE ME THIS 12<sup>th</sup> DAY OF MARCH, 1972, A.D.

## AFFIDAVIT

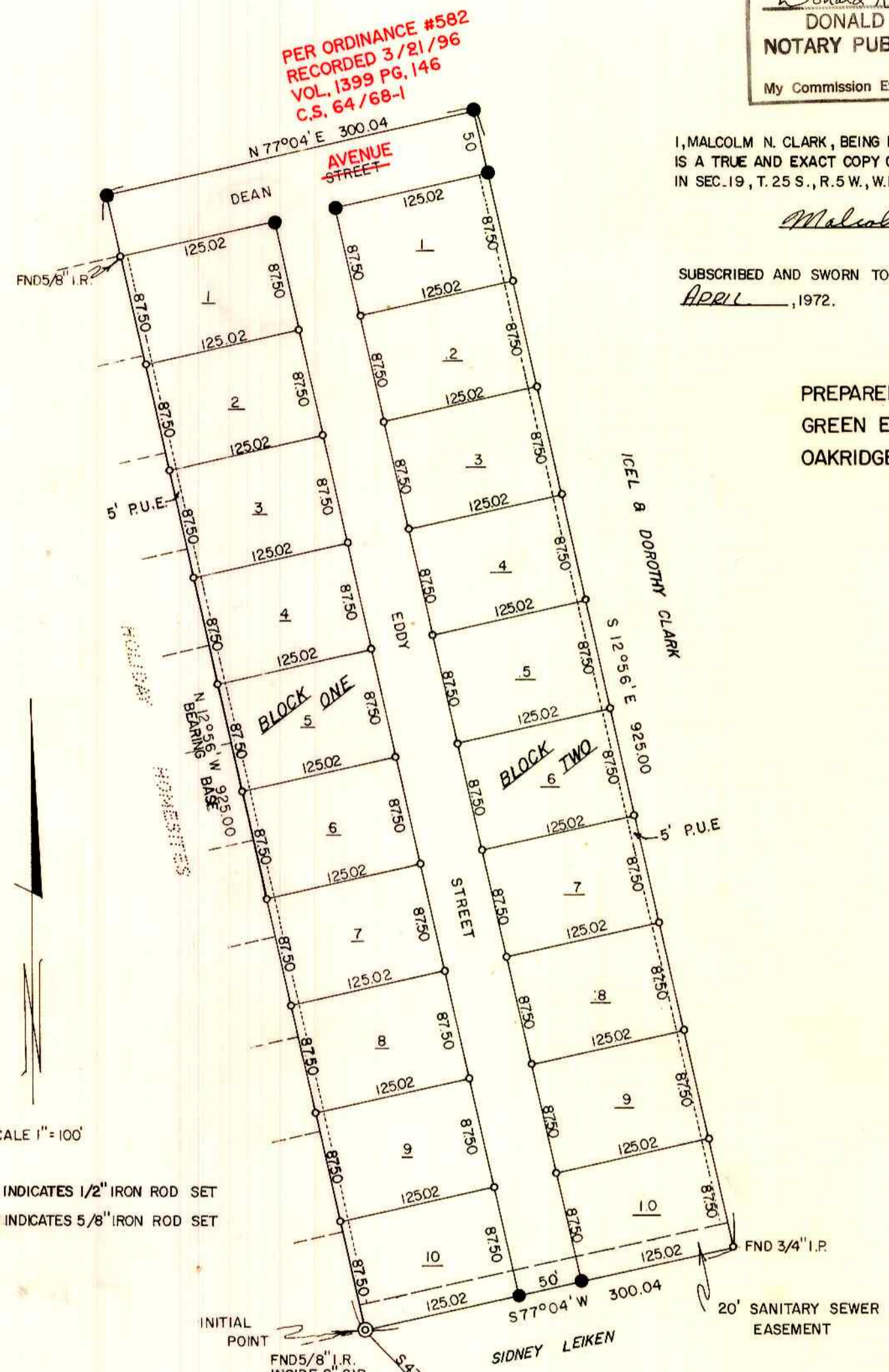
I, MALCOLM N. CLARK, REGISTERED PROFESSIONAL LAND SURVEYOR, BEING FIRST DULY SWORN ON OATH, SAY THAT I HAVE CORRECTLY SURVEYED AND MARKED WITH PROPER MONUMENTS THE LANDS AS SHOWN ON THE PLAT AND THAT THE INITIAL POINT IS A 2" x 36" GALVANIZED IRON PIPE 6" BELOW THE SURFACE OF THE GROUND AND THAT SAID POINT BEARS N 43°50' W A DISTANCE OF 387.1 FEET FROM THE NE CORNER OF THE JOSEPH HOLMAN D.L.C. No. 37 T. 25 S., R. 5 W., W.M.

*Malcolm N. Clark*

SUBSCRIBED AND SWORN TO BEFORE ME THIS 13<sup>th</sup> DAY OF MARCH, 1972 A.D.

## APPROVALS

- APPROVED APRIL 25, 1972 BY COMMISSIONER *Ray E. Dawson* SUTHERLIN PLANNING COMMISSION
- APPROVED APRIL 25, 1972 BY COMMISSIONER *Stanford Buell* CHAIRMAN *George Enlow* APPROVED 2-11, 1972
- APPROVED APRIL 25, 1972 BY COMMISSIONER *Al Olegel* CITY MANAGER *George Enlow* APPROVED 2-11, 1972
- APPROVED APRIL 24, 1972 BY ASSESSOR *Selma M. Monahan Jr.*
- APPROVED APRIL 20, 1972 BY COUNTY SURVEYOR *Francis L. Ingram*



SCALE 1" = 100'

○ INDICATES 1/2" IRON ROD SET  
● INDICATES 5/8" IRON ROD SET

STATE OF OREGON  
COUNTY OF DOUGLAS SS

I, **G.D. MYLLENBECK** BEING DULY SWORN, DEPOSE AND SAY UPON OATH AS COUNTY CLERK OF DOUGLAS COUNTY, OREGON, DO HEREBY CERTIFY THAT THIS COPY OF THE PLAT OF BARNES SUBDIVISION HAS BEEN COMPARED WITH THE ORIGINAL AND IT IS AN EXACT COPY OF THE ORIGINAL, AS FILED IN MY OFFICE. WITNESS MY HAND AND OFFICIAL SEAL THIS 27<sup>th</sup> DAY OF APRIL, 1972.

*G.D. Myllenbeck*  
COUNTY CLERK

FILED THIS 27<sup>th</sup> DAY OF APRIL 1972

*G.D. Myllenbeck*  
COUNTY CLERK

