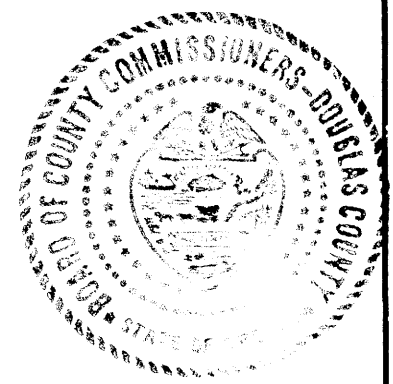
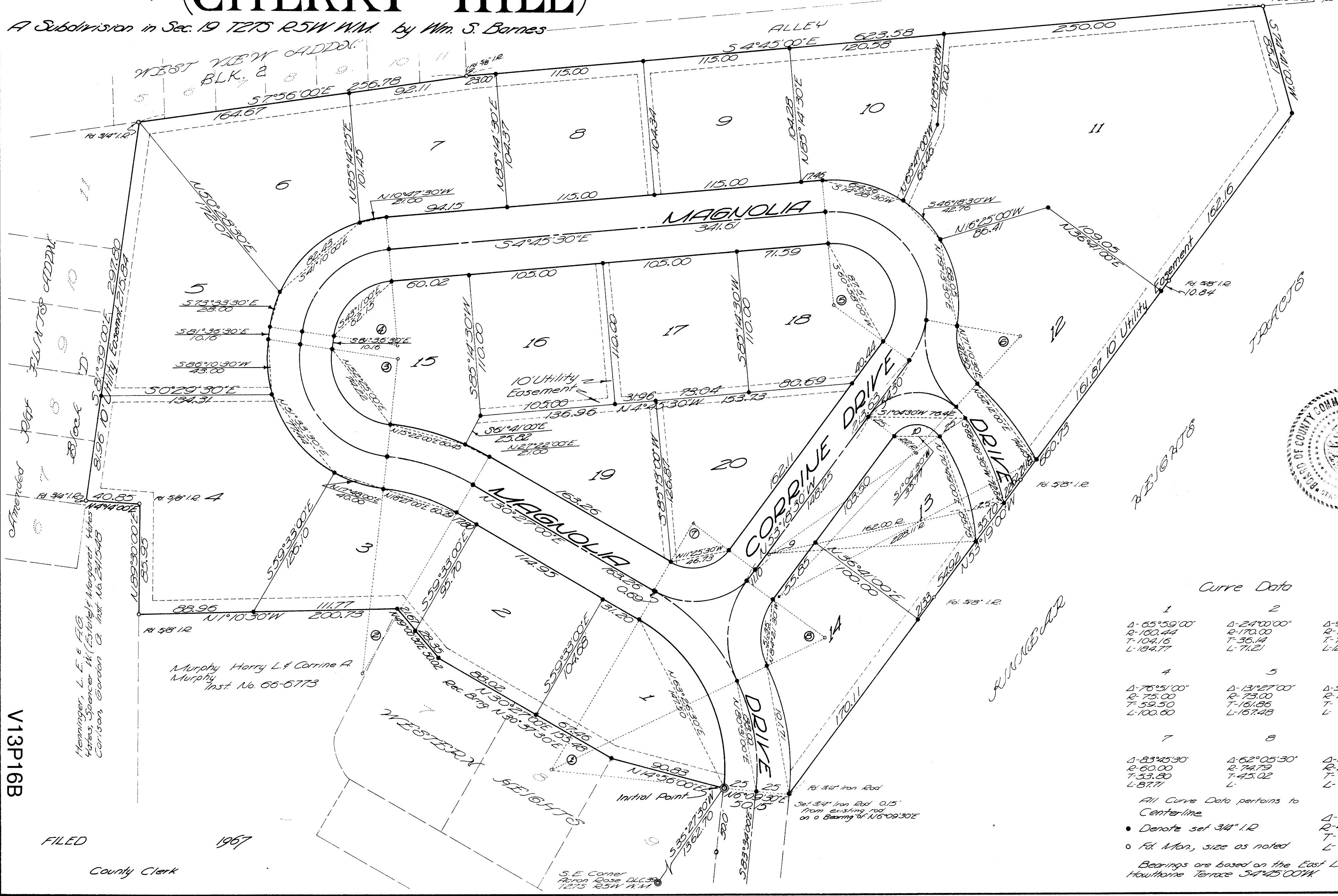


SAKURA YAMA

JUNE 22, 1967 (CHERRY HILL) SCALE 1"=50'

A Subdivision in Sec. 19 T27S R5W N.M. by Wm. S. Barnes



Curve Data

Curve No.	Delta	Radius	Tangent	Length
1	Δ-65°59'00"	R-160.44	T-104.16	L-184.77
2	Δ-24°00'00"	R-170.00	T-36.14	L-71.21
3	Δ-91°56'30"	R-76.61	T-79.25	L-122.93
4	Δ-76°51'00"	R-75.00	T-59.50	L-100.60
5	Δ-13°27'00"	R-73.00	T-16.86	L-16.48
6	Δ-56°43'00"	R-75.00	T-	L-
7	Δ-83°45'30"	R-60.00	T-53.80	L-87.71
8	Δ-62°05'30"	R-74.79	T-45.02	L-
9	Δ-30°42'00"	R-187.00	T-	L-
10	Δ-108°46'30"	R-47.00	T-	L-

All Curve Data pertains to Center-line
 • Denote set 3/4" I.R.
 ○ Fd. Mon., size as noted
 Bearings are based on the East Line of Hawthorne Terrace 54°45'00"W

Murphy Harry L. & Corrine A. Murphy
 Inst. No. 65-6773

Heminger, L. E. & Co.
 Surveyors
 405 S. Peachtree St.
 Atlanta, Georgia

FILED 1967
 County Clerk

VOL. 13, PAGE 16

V13P16B
 VOL. 13, PAGE 16