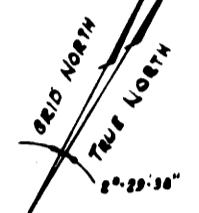
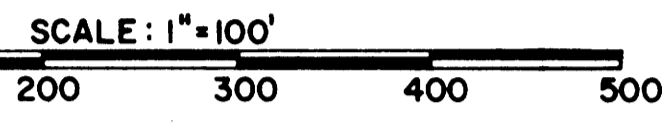


# FOREST HILLS FIRST ADDITION

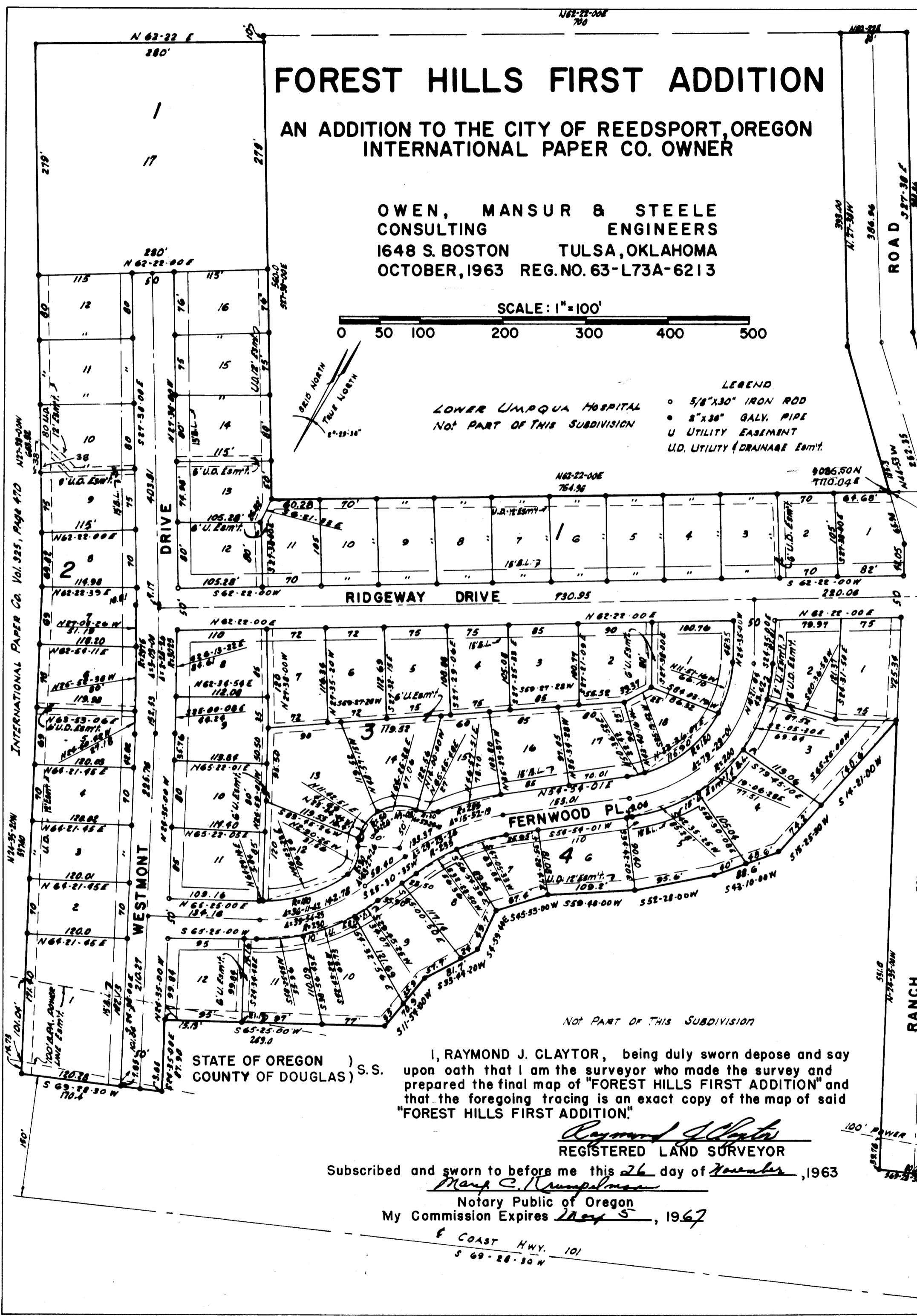
AN ADDITION TO THE CITY OF REEDSPORT, OREGON  
INTERNATIONAL PAPER CO. OWNER

OWEN, MANSUR & STEELE  
CONSULTING ENGINEERS  
1648 S. BOSTON TULSA, OKLAHOMA  
OCTOBER, 1963 REG. NO. 63-L73A-6213



LOWER UMPQUA HOSPITAL  
NOT PART OF THIS SUBDIVISION

- LEGEND
- 5/8" X 30" IRON ROD
  - 2" X 36" GALV. PIPE
  - U UTILITY EASEMENT
  - U.D. UTILITY & DRAINAGE EMTY.



NOT PART OF THIS SUBDIVISION

STATE OF OREGON ) S.S.  
COUNTY OF DOUGLAS )

I, RAYMOND J. CLAYTOR, being duly sworn depose and say upon oath that I am the surveyor who made the survey and prepared the final map of "FOREST HILLS FIRST ADDITION" and that the foregoing tracing is an exact copy of the map of said "FOREST HILLS FIRST ADDITION."

Raymond J. Clayton  
REGISTERED LAND SURVEYOR

Subscribed and sworn to before me this 26 day of November, 1963

Mary C. Thompson  
Notary Public of Oregon  
My Commission Expires May 5, 1967

COAST HWY. 101  
S 69-28-30 W

### APPROVALS

BY ORDER OF THE REEDSPORT PLANNING COMMISSION

APPROVED DEC 4 1963  
Tom Lillebo  
PRESIDENT

E.C. Daily  
SECRETARY

BY ORDER OF THE COUNTY COURT

APPROVED Dec. 12 1963  
V.T. Jackson  
COUNTY JUDGE

E. Metzger  
COMMISSIONER

APPROVED December 12 1963  
Shad W. Daily 12/9/1963  
COUNTY SURVEYOR

APPROVED December 12 1963  
Island W. Swanson Jr.  
COUNTY ASSESSOR

### CERTIFICATE OF SURVEYOR

STATE OF OREGON ) S.S.  
COUNTY OF DOUGLAS )

I, Raymond J. Clayton, being first duly sworn, depose and say that I have correctly surveyed and marked with proper monuments the land shown on the annexed plat of which the following is a true and correct description: Beginning at the initial point, a 2" Galv. Iron Pipe, being located south 918.13 feet and west 2911.64 feet, from the northeast corner of Section 4, Township 22 South, Range 12 West, Willamette Meridian, Douglas County, Oregon, said bearings, together with all bearings used herein, being determined from the Oregon Grid South Zone; thence North 44° 53' West 185.3 feet; thence North 27° 38' West 395.0 feet; thence North 62° 22' East 80.0 feet; thence South 27° 38' East 380.86 feet; thence South 44° 53' East 258.44 feet; thence South 24° 55' East 789.01 feet; thence South 64° 28' 50" West 88.2 feet; thence North 24° 55' West 351.6 feet; thence South 44° 53' West 140.4 feet; thence South 19° 25' 30" West 74.2 feet; thence South 49° 10' West 88.6 feet; thence South 52° 28' West 95.6 feet; thence South 59° 46' West 104.2 feet; thence South 45° 53' West 67.4 feet; thence South 4° 54' 40" East 49.7 feet; thence South 33° 44' 20" West 81.7 feet; thence South 11° 54' West 70.9 feet; thence South 65° 25' West 269.0 feet; thence South 24° 35' East 87.9 feet; thence South 64° 28' 30" West 170.4 feet; thence North 24° 55' 20" West 557.40 feet; thence North 27° 38' West 663.82 feet; thence North 62° 22' East 280.0 feet; thence South 27° 38' East 560.0 feet; thence North 62° 22' East 134.96 feet to the true point of beginning containing 19.607 acres, all in Section 4, Township 22 South, Range 12 West, Willamette Meridian, Douglas County, Oregon.

Oregon No. 515  
Date 11-12-63



Subscribed and sworn to before me this 12<sup>th</sup> day of November, 1963.  
Raymond J. Clayton  
Notary Public of Oregon  
My Commission Expires July 1, 1967

### DEDICATION

Know all men by these presents that INTERNATIONAL PAPER COMPANY, a New York corporation, is owner of the lands represented on the annexed plat and has caused the same to be surveyed and platted by the name of (FOREST HILLS FIRST ADDITION), and hereby dedicates to the use of the public forever the streets shown hereon.

ATTEST:  
F. W. Brown  
Assistant Secretary

INTERNATIONAL PAPER COMPANY  
By GEO. T. WARD  
Vice President

STATE OF NEW YORK ) S.S.  
COUNTY OF NEW YORK )

NOVEMBER 15, A.D. 1963. Personally appeared GEO. T. WARD and F. W. Brown, who, being duly sworn, did say that they are the Vice President and Asst Secretary respectively, of International Paper Company and that the seal affixed to the foregoing instrument is the corporate seal of said corporation and that said instrument was signed and sealed in behalf of said corporation by authority of its board of directors; and they acknowledged said instrument to be its voluntary act and deed.

In testimony whereof, I have hereunto set my hand and affixed my official seal this day and year above written.  
Walt Thomas Jilinski  
Notary Public of New York

STATE OF OREGON ) S.S.  
COUNTY OF DOUGLAS )

I, G. D. MYLLENBECK, County Clerk of Douglas County, Oregon, do hereby certify that the within copy of plat has been by me compared with the original thereof as the same appears on file in my office and custody. Witness my hand and official seal this 12<sup>th</sup> day of December, 1963.

G. D. Mylledenbeck  
County Clerk

My Commission Expires March 30, 1965

NOTE: This plat subject to restrictions and protective covenants recorded in Vol. 330 Page 112 deed records of Douglas County, Oregon

Filed December 12, 1963  
G. D. Mylledenbeck  
County Clerk

