

APPROVED Sept 4, 1962  
B. R. Shumaker  
County Health Officer

3/4" Pipe at corners of Lots 4, 12 & 20 incl. with suffixed letters A to H incl.  
3/4" Rods at corners of Lots 25 to 33 incl. with suffixed letters A to D incl.  
3/4" Rods at corners of Lots on N & S. side of Blocks I, J & K

Broken Lot lines indicate Lot lines of Orig. Subdivision recorded 1931

FILED SEPTEMBER 4, 1962

G. D. Myltenbeck  
County Clerk

State of Oregon } ss.  
County of Douglas } ss.  
I, G. D. Myltenbeck, County Clerk of Douglas County, Oregon, do hereby certify that the within copy of plat has been by me compared with the original thereof and that it is an exact copy of the whole thereof as the same appears on file in my office and custody.  
Witness my hand and official seal this 4TH day of SEPT. 1962

G. D. Myltenbeck  
County Clerk

State of Oregon } ss.  
County of Douglas } ss.  
I, Arthur Boyer, being first duly sworn, depose and say, upon oath, that I am the surveyor who made the survey and prepared the final map of "AMENDED PLAT OF RIDDLE CEMETERY" and that the foregoing tracing is an exact copy of the map of said "AMENDED PLAT OF RIDDLE CEMETERY"

Arthur Boyer

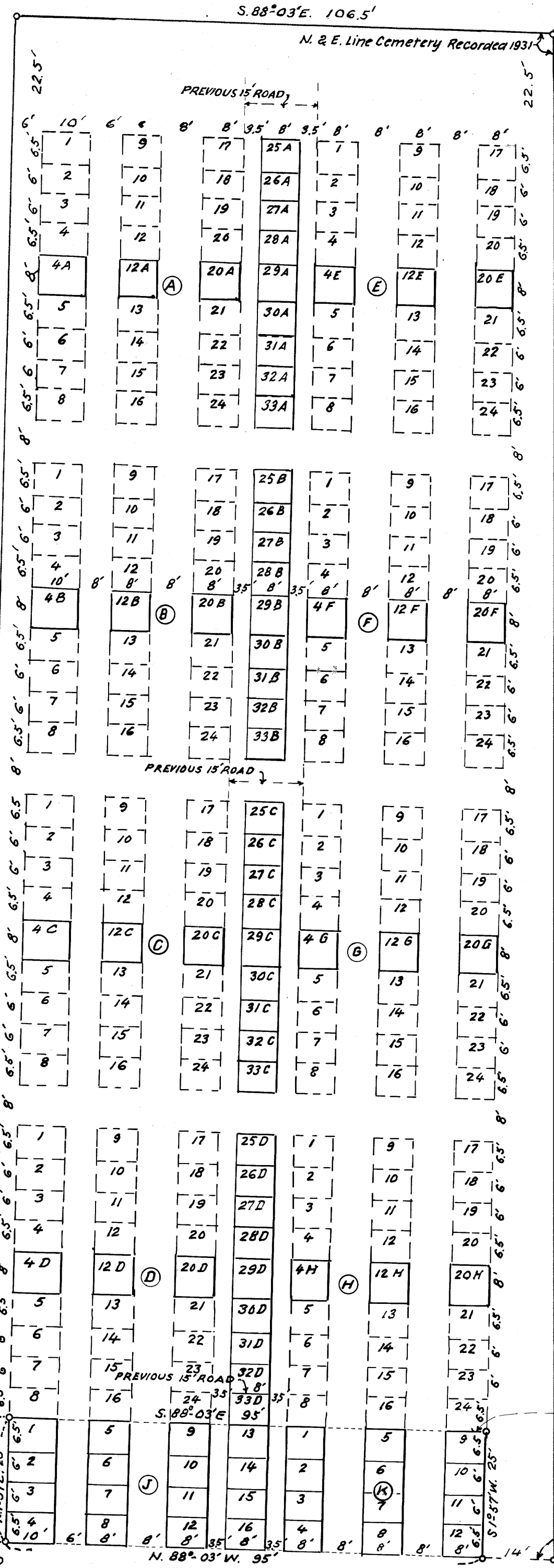
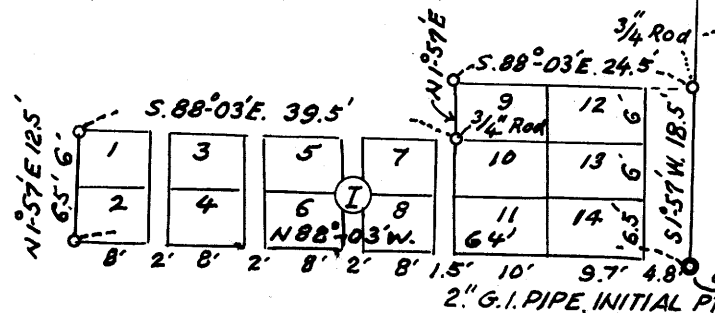
Subscribed and sworn to before me this 20TH day of August 1962

G. D. Myltenbeck  
County Clerk

NOTE: BLOCKS J & K ARE IN PORTION OF RECORDED PLAT OF RIDDLE CEMETERY, BETWEEN BLOCKS D & H AND SOUTH LINE OF PLAT

BLOCK I IS IN UNOCCUPIED PORTION OF OLD UNPLATTED CEMETERY AS RECORDED IN VOL 301, PG. 78, DEEDS.

Initial Point, shown below, is 151' S & 132' W of N.W. Cor. Isaac Flint D.L. C. 45, T. 30 S; R. 6 W; W. M.



S. 02° 19' W 303.5'

SURVEYOR'S CERTIFICATE

State of Oregon } ss.  
County of Douglas } ss.

I, Arthur Boyer, do hereby certify, depose and say that I have surveyed and marked with proper monuments the land shown on the annexed plat of which the following is a true and correct description to wit: The 15 ft. by 58 ft. parcels of land situated between Blocks A & E, B & F, C & G and D & H of the Riddle, Oregon, Cemetery as same was platted and recorded in 1931; said parcels being portions of 15 ft. road previously located between said blocks.

ALSO: The 8 ft. by 10 ft. parcels of land situated between Lots 4 & 5 of Blocks A, B, C & D and the 8 ft. by 8 ft. parcels between Lots 4 & 5 of Blocks E, F, G & H and between Lots 12 & 13 and 20 & 21 of Blocks A to H inclusive, of said cemetery, the above mentioned parcels being portions of an 8 ft. wide walk between said lots.  
ALSO: Beginning at a point on the south line of the Riddle Cemetery as platted and recorded in 1931, said beginning point being S. 88° 03' E. 6.0 ft. from the Initial Point of said cemetery, which is 151' S & 132' W. of the N.W. corner of the Isaac Flint Donation Land Claim No. 45, T. 30 S; R. 6 W; W. M.; thence running, from said beginning point, N. 1° 57' E. 25.0 ft. to the S.W. corner of Block D of said cemetery, thence S. 88° 03' E. 95.0 ft. along the south line of Blocks D & H of said cemetery, which is also the south line of the portion of said cemetery, which is platted into lots, to the S.E. corner of said Block H, thence S. 1° 57' W. 25.0 ft. to a point on the south line of said cemetery, which is N. 88° 03' W. 14.0 ft. from the S.E. corner thereof, thence N. 88° 03' W. 95.0 ft. along said south line, to the place of beginning.  
ALSO: Beginning at a point which is N. 88° 03' W. 4.8 ft. from the Initial Point of the Riddle Cemetery, as recorded in 1931, thence running N. 88° 03' W. 6.4 ft.; thence N. 1° 57' E. 12.5 ft.; thence S. 88° 03' E. 39.5 ft.; thence N. 1° 57' E. 6.0 ft.; thence S. 88° 03' E. 24.5 ft. to the west line of said cemetery, thence S. 1° 57' W. 18.5 ft. to the place of beginning, the above situated in an unoccupied portion of an old cemetery which is not platted into recorded lots and which is adjacent to and west of said Riddle Cemetery, a description of the boundaries of said old cemetery being in Vol. 301, Pg. 78, Douglas County Deed Records; All the above in Sec. 23, T. 30 S; R. 6 W; W. M; Douglas County, Oregon.

Subscribed and sworn to before me this 20TH day of August 1962

Arthur Boyer  
G. D. Myltenbeck  
County Clerk

DEDICATION

KNOW ALL MEN BY THESE PRESENTS, That the Officers of the Riddle Cemetery Maintenance District, representing the owners of the lands represented and described on the annexed plat, have caused the same to be surveyed and platted for cemetery purposes, by the name of the Amended Plat of The Riddle Cemetery and hereby dedicate all streets and walks to the public use forever.

IN TESTIMONY WHEREOF The Riddle Cemetery Maintenance District has caused these presents to be signed by its chairman and secretary.

J. E. Aikins  
J. E. Aikins, Chairman

G. J. Aspey  
G. J. Aspey, Secretary

State of Oregon } ss.  
County of Douglas } ss.

On this 15TH day of MAY 1962, before me appeared J. E. Aikins, Chairman and G. J. Aspey, Secretary of The Riddle Cemetery Maintenance District, to me personally known, who being duly sworn, did say the said Maintenance District represents the lawful owners of the Tract of land shown on the annexed plat and that they signed the accompanying dedication as their free and voluntary act and deed for the said Maintenance District.

IN WITNESS WHEREOF, I have hereunto set my hand and affixed my official seal this day and year first above written

My Commission Expires MAY 10, 1964

W. B. Sproubridge  
W. B. Sproubridge, Notary Public for Oregon

APPROVALS

By Order of The County Court

APPROVED August 27 1962

V. T. Jackson  
County Judge

Ray E. Johnson  
County Commissioner

APPROVED 8/27 1962

Frank M. Dushy  
County Surveyor

By Order of The County Planning Commis'n.

APPROVED August 23 1962

Donald B. Harmon  
Chairman

Norman L. Coulter  
Secretary

APPROVED August 27, 1962

Island W. Swarwood Jr.  
County Assessor



AMENDED PLAT OF RIDDLE CEMETERY  
IN SEC. 23, T. 30 S; R. 6 W; WIL. MERIDIAN  
DOUGLAS COUNTY, OREGON.  
MAY, 1962 1" = 20 FT.