

FIRST ADDITION TO MELROSE CEMETERY

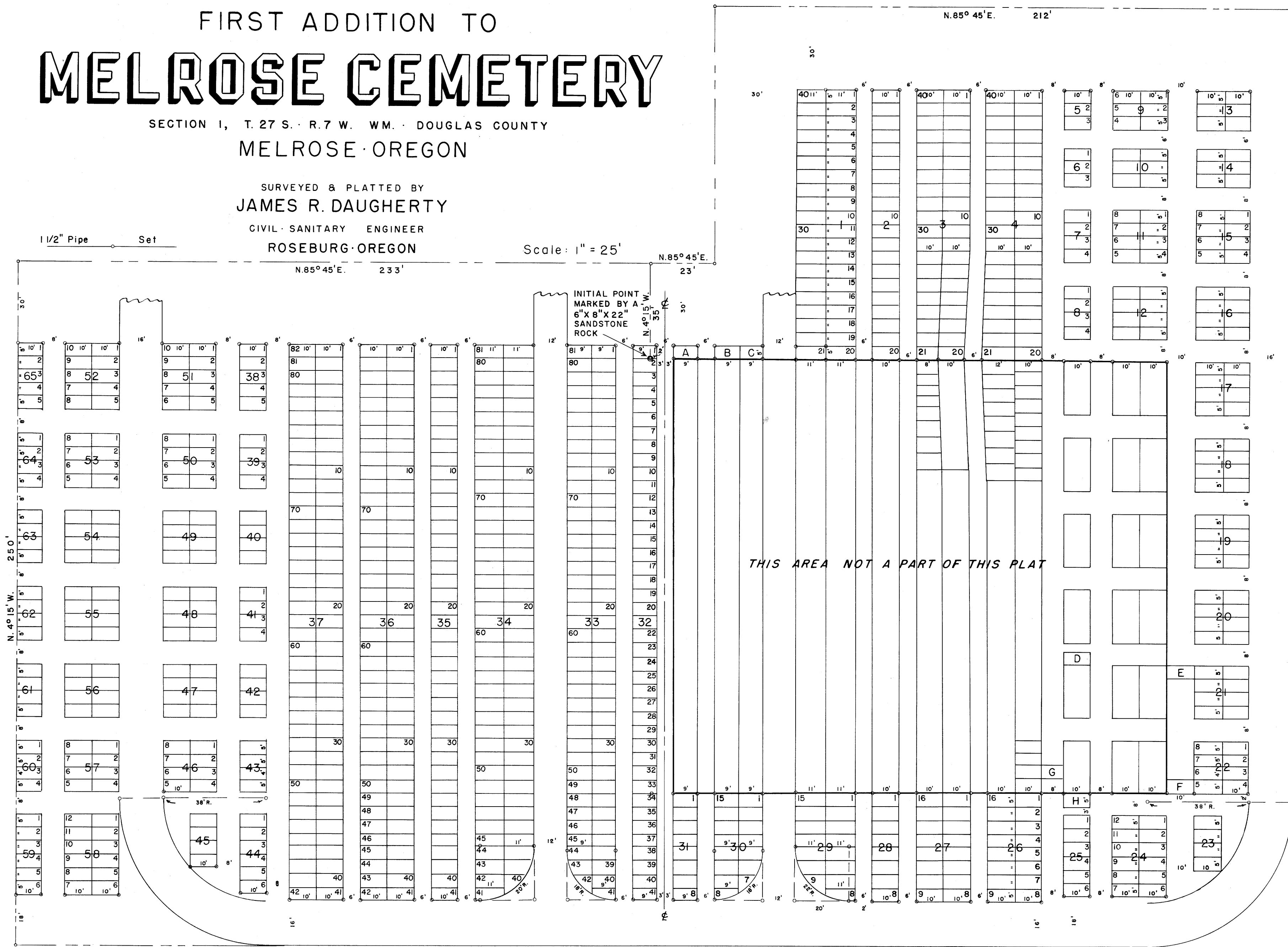
SECTION 1, T. 27 S. R. 7 W. WM. DOUGLAS COUNTY
MELROSE OREGON

SURVEYED & PLATTED BY
JAMES R. DAUGHERTY

CIVIL SANITARY ENGINEER
ROSEBURG OREGON

1 1/2" Pipe Set

Scale: 1" = 25'



S. 85° 45' W. 468'

APPROVALS

COUNTY PLANNING COMMISSION

Sept. 28 1959

Peter B. Serafin
PRESIDENT

Donald B. Harmon
SECRETARY

BY ORDER OF THE COUNTY COURT

Sept. 30 1959

V. T. Jackson
COUNTY JUDGE

E. Metzger
COMMISSIONER

And W. Daily 9/29/59
COUNTY SURVEYOR

FILED September 30, 1959

Marvin C. Bowker 9/29/59
COUNTY ASSESSOR

Chas. Deerner
COUNTY CLERK