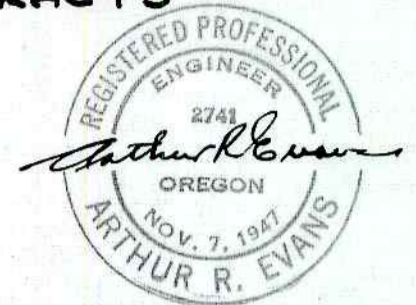


# PALOS VERDE

A PART OF LOTS 9 AND 10  
EDENBOWER ORCHARD TRACTS

GRANT AND EVANS, ENGINEERS  
ROSEBURG OREGON

SCALE 1" = 60'



CERTIFICATE OF ENGINEER

STATE OF OREGON )  
COUNTY OF DOUGLAS ) S.S.

I, ARTHUR R. EVANS, BEING FIRST DULY SWORN, DEPOSE AND SAY THAT I HAVE CORRECTLY SURVEYED AND MARKED WITH PROPER MONUMENTS, THE LAND BELINEATED ON THE ANNEXED PLAT, OF WHICH THE FOLLOWING IS A TRUE AND CORRECT DESCRIPTION:— BEGINNING AT THE INITIAL POINT, A 2"x36" GALVANIZED IRON PIPE 6" BELOW GROUND, BRACING AT THE INITIAL POINT, A BROAD STREET, FROM WHICH THE S.W. CORNER OF THE W.J. MARTIN D.L.C. NO. 62, T275, R6W, WM, BEARS S88°51'E, 2275.2 FT., AND A 1" IRON PIPE AT 178.9 FT. THENCE N1°07'E, 637.50 FT., ALONG SAID RIGHT-OF-WAY LINE TO A 1" IRON PIPE AT ITS INTERSECTION WITH THE SOUTH RIGHT-OF-WAY LINE OF GENERAL AVENUE. THENCE S88°51'E, 276.96 FT., ALONG SAID SOUTH RIGHT-OF-WAY LINE TO A 1" IRON PIPE AT ITS INTERSECTION WITH THE WEST RIGHT-OF-WAY LINE OF THE NEW PACIFIC HIGHWAY. THENCE S39°10'W, 637.90 FT., ALONG SAID HIGHWAY RIGHT-OF-WAY LINE TO A 1" IRON PIPE. THENCE N88°51'W, 254.40 FT., TO THE PLACE OF BEGINNING, CONTAINING 3.89 ACRES, MORE OR LESS, IN SECTION 1, T275, R6W, WM, DOUGLAS COUNTY OREGON.

OREGON No. 2741  
NOV. 7, 1947

SUBSCRIBED AND SWORN TO BEFORE ME THIS 7<sup>th</sup> DAY OF January, 1953

*Arthur R. Evans*  
ARTHUR R. EVANS  
REG. PROFESSIONAL ENGINEER  
*Roy Agce*  
COUNTY CLERK

### DEDICATION

WE, Edna M. Hewes, HUSBAND AND WIFE, OWNERS OF THE LANDS REPRESENTED AND DESCRIBED ON THE ANNEXED PLAT, HAVE CAUSED THE SAME TO BE SURVEYED AND PLATTED BY THE PUBLIC SURVEYOR THE STREETS SHOWN THEREON AND WE HEREBY DEDICATE TO THE USE OF THE PUBLIC FOREVER THE STREETS SHOWN THEREON AND HAVE HEREBY SET THEIR HANDS THIS 19 DAY OF March 1953

*Walter Vatland*  
*J. J. Hewes*  
*Edna M. Hewes*

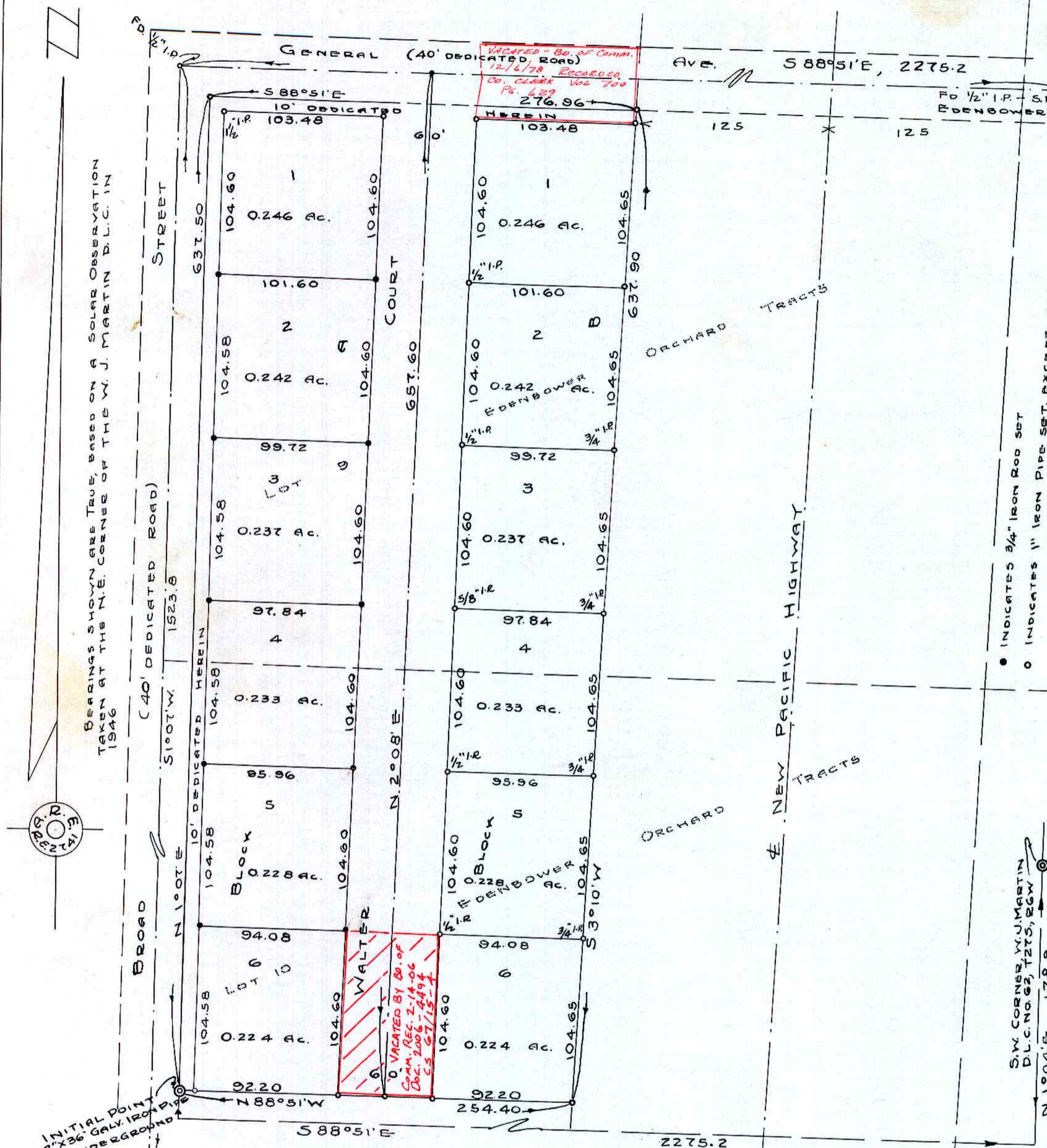
### ACKNOWLEDGEMENT

STATE OF OREGON ) S.S.  
COUNTY OF DOUGLAS )  
I, CHAS. DAERMER, COUNTY CLERK OF DOUGLAS COUNTY, OREGON DO HEREBY CERTIFY THAT THE WITHIN COPY OF PLAT HAS BEEN BY ME COMPARED WITH THE ORIGINAL THEREOF AND THAT IT IS AN EXACT COPY OF THE WHOLE THEREOF, AS THE SAME APPEARS ON FILE IN MY OFFICE AND CUSTODY. WITNESS MY HAND AND OFFICIAL SEAL THIS 16<sup>th</sup> DAY OF July 1953

*Chas. Daerner*  
COUNTY CLERK

### APPROVALS

BY ORDER OF CITY PLANNING COMMISSION	BY ORDER OF COUNTY COURT
Approved <i>May 29<sup>th</sup></i> 1953 <i>Chas. Daerner</i> PRESIDENT	Approved <i>July 16</i> 1953 <i>Ch. Hill</i> COUNTY JUDGE
<i>Messie W. Pentice</i> SECRETARY	<i>E. Metzger</i> COMMISSIONER
Approved <i>June 13</i> 1953	Approved <i>June 13</i> 1953
<i>Chas. Daerner</i> COUNTY SURVEYOR	<i>Red Davis</i> COUNTY ASSESSOR



STATE OF OREGON ) S.S.  
COUNTY OF DOUGLAS )

I, A. R. EVANS, BEING DULY SWORN, DEPOSE AND SAY UPON OATH: THAT I AM THE ENGINEER WHO MADE THE SURVEY AND PREPARED THE FINAL MAP OF "PALOS VERDE"; AND THAT THE FOREGOING TRACING IS AN EXACT COPY OF THE MAP OF SAID "PALOS VERDE."

*Arthur R. Evans*  
ARTHUR R. EVANS  
REG. PROF. ENG'R

SUBSCRIBED AND SWORN TO BEFORE ME THIS 7<sup>th</sup> DAY OF January 1953

*Roy Agce*  
COUNTY CLERK

STATE OF OREGON ) S.S.  
COUNTY OF DOUGLAS )

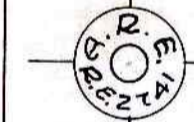
I, CHAS. DAERMER, COUNTY CLERK OF DOUGLAS COUNTY, OREGON DO HEREBY CERTIFY THAT THE WITHIN COPY OF PLAT HAS BEEN BY ME COMPARED WITH THE ORIGINAL THEREOF AND THAT IT IS AN EXACT COPY OF THE WHOLE THEREOF, AS THE SAME APPEARS ON FILE IN MY OFFICE AND CUSTODY. WITNESS MY HAND AND OFFICIAL SEAL THIS 16<sup>th</sup> DAY OF July 1953

*Chas. Daerner*  
COUNTY CLERK

FILED *July 16<sup>th</sup>* 1953

*Chas. Daerner*  
COUNTY CLERK

BEARINGS SHOWN ARE TRUE, BASED ON A SOLAR OBSERVATION TAKEN AT THE N.E. CORNER OF THE W. J. MARTIN D.L.C. IN 1946



INITIAL POINT 2"x36" GALV. IRON PIPE 6" UNDERGROUND

FO. 1 1/2" I.P. AT E. OF BROAD STREET & W. LINE OF GREEN ACRES