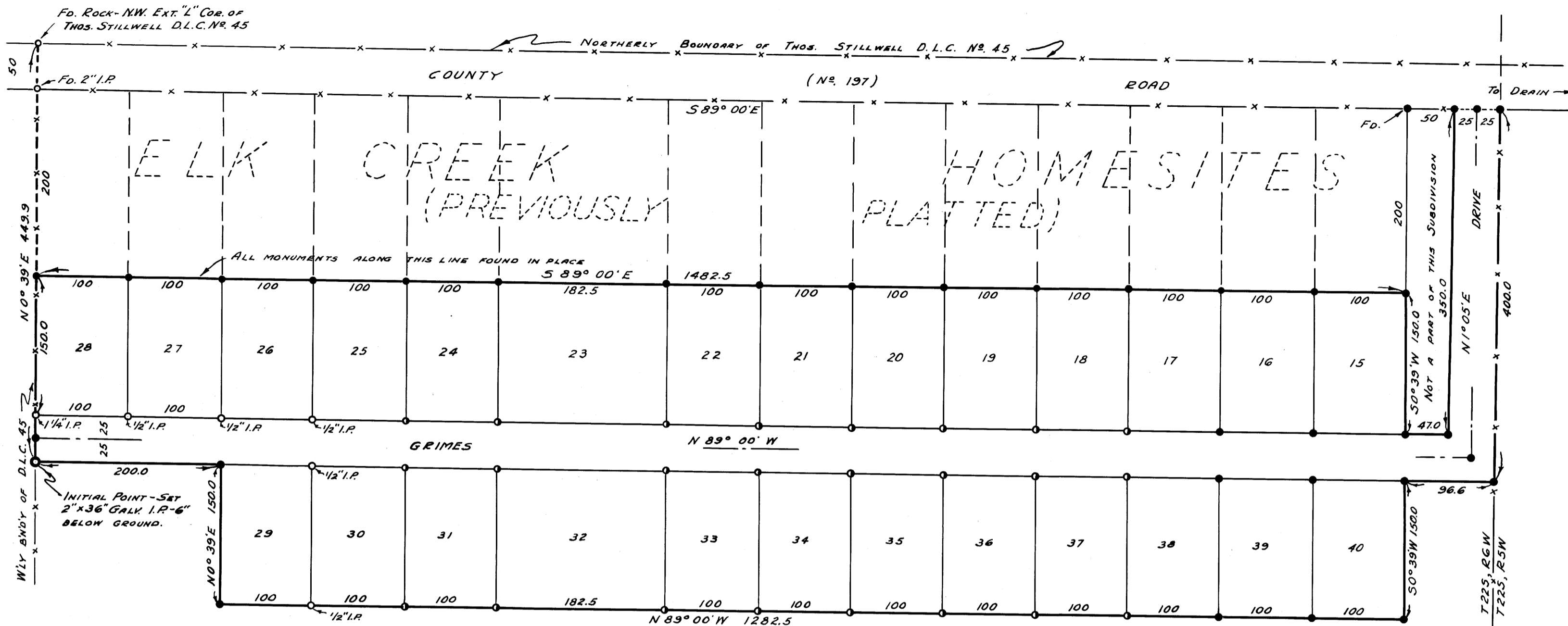


STATE OF OREGON ) S.S.  
COUNTY OF DOUGLAS )  
I, ROY AGEE, COUNTY CLERK OF DOUGLAS COUNTY, OREGON, DO HEREBY CERTIFY THAT THE WITHIN COPY OF PLAT HAS BEEN BY ME COMPARED WITH THE ORIGINAL THEREOF AND THAT IT IS AN EXACT COPY OF THE WHOLE THEREOF, AS THE SAME APPEARS ON FILE IN MY OFFICE AND CUSTODY.  
10<sup>th</sup> DAY OF NOVEMBER 1952.

*Roy Agee*  
COUNTY CLERK



NOTE:-  
● DENOTES 3/4" IRON ROD  
○ DENOTES 5/8" IRON ROD  
○ DENOTES AS SHOWN.

BEARINGS BASED ON BEARINGS OF ELK CREEK HOMESITES AS FILED IN COUNTY CLERK'S OFFICE.  
ALL LOTS CONTAIN 0.34 ACRES, EXCEPT LOTS 23 & 32, WHICH CONTAIN 0.63 ACRES EACH.

SCALE 1"=100'

CERTIFICATE OF SURVEYOR

STATE OF OREGON ) S.S.  
COUNTY OF DOUGLAS )

I, ARTHUR R. EVANS, BEING FIRST DULY SWORN, DEPOSE AND SAY THAT I HAVE CORRECTLY SURVEYED AND MARKED WITH PROPER MONUMENTS THE LANDS DELINEATED ON THE ANNEXED PLAT, OF WHICH THE FOLLOWING IS A TRUE AND CORRECT DESCRIPTION: BEGINNING AT THE INITIAL POINT, A 2"x36" GALV. I.P. IN THE WESTERLY BOUNDARY OF THE THOS. STILLWELL D.L.C. NO. 45, T 225, R 6W, W.M., FROM WHICH THE NORTHWEST CORNER OF SAID D.L.C. BEARS N 0° 39' E 449.9 FT.; THENCE N 0° 39' E 200.0 FT. ALONG SAID D.L.C. BOUNDARY TO THE SOUTHWEST CORNER OF ELK CREEK HOMESITES, AS PLATTED AND FILED IN THE COUNTY CLERK'S OFFICE OF DOUGLAS COUNTY, OREGON; THENCE S 89° 00' E 182.5 FT. ALONG THE SOUTH BOUNDARY THEREOF TO THE SOUTHEAST CORNER OF SAID HOMESITES; THENCE S 0° 39' W 150.0 FT. TO A 3/4" I. ROD; THENCE S 89° 00' E 47.0 FT. TO A 3/4" I. ROD; THENCE N 1° 05' E 350.0 FT. TO A 3/4" I. ROD IN THE SOUTH LINE OF COUNTY ROAD NO. 197; THENCE S 89° 00' E 50.0 FT. TO A 3/4" I. ROD IN THE RANGE LINE BETWEEN T 225, R 6W; THENCE S 1° 05' W 400.0 FT. ALONG SAID RANGE LINE, TO A 3/4" I. ROD; THENCE N 89° 00' W 36.6 FT. TO A 3/4" I. ROD; THENCE S 0° 39' W 150.0 FT. TO A 3/4" I. ROD; THENCE N 89° 00' W 1282.5 FT. TO A 3/4" I. ROD; THENCE N 0° 39' E 150.0 FT. TO A 3/4" I. ROD; THENCE N 89° 00' W 200.0 FT. TO THE PLACE OF BEGINNING, CONTAINING 11.63 ACRES, MORE OR LESS, IN THOS. STILLWELL D.L.C. NO. 45, T 225, R 6W, DOUGLAS COUNTY, OREGON.

OREGON NO. 2741  
NOV. 7, 1947.

SUBSCRIBED AND SWORN TO BEFORE ME THIS 14<sup>th</sup> DAY OF October 1952  
*Arthur R. Evans*  
ARTHUR R. EVANS  
REG. PROFESSIONAL ENGINEER

STATE OF OREGON ) S.S.  
COUNTY OF DOUGLAS )

I, ARTHUR R. EVANS, BEING DULY SWORN, DEPOSE AND SAY UPON OATH: THAT I AM THE ENGINEER WHO MADE THE SURVEY AND PREPARED THE FINAL MAP OF "ELK CREEK HOMESITES EXTENSION" AND THAT THE FOREGOING TRACING IS AN EXACT COPY OF THE MAP OF SAID "ELK CREEK HOMESITES EXTENSION".

SUBSCRIBED AND SWORN TO BEFORE ME THIS 14<sup>th</sup> DAY OF October 1952  
*Arthur R. Evans*  
ARTHUR R. EVANS  
REG. PROFESSIONAL ENGINEER

APPROVALS

BY ORDER OF THE COMMON COUNCIL  
CITY OF DRAIN, OREGON.

APPROVED *W. E. McIntosh* 4<sup>th</sup> 1952  
MAYOR.

*V. R. Thomas*  
RECORDER.

BY ORDER OF THE COUNTY COURT  
APPROVED *Dec. 10* 1952

*Al. Shier*  
COUNTY JUDGE.  
*L. V. Beckley*  
COMMISSIONER.

APPROVED *November 14* 1952.

*Paul Johnson*  
COUNTY SURVEYOR.

APPROVED *Nov. 15* 1952

*Ned Dixon*  
COUNTY ASSESSOR.

DEDICATION

KNOW ALL MEN BY THESE PRESENTS: THAT WE, LYLE O. GRIMES AND NINA G. GRIMES, HUSBAND AND WIFE, OWNERS OF THE LANDS REPRESENTED AND DESCRIBED ON THE ANNEXED PLAT, HAVE CAUSED THE SAME TO BE SURVEYED AND PLATTED BY THE NAME OF "ELK CREEK HOMESITES EXTENSION", AND WE HEREBY DEDICATE TO THE USE OF THE PUBLIC FOREVER, THE STREETS SHOWN THEREON.

IN TESTIMONY WHEREOF, THE SAID LYLE O. GRIMES AND NINA G. GRIMES HAVE HEREBY SET THEIR HANDS THIS 12<sup>th</sup> DAY OF November 1952.

*Lyle O. Grimes* *Nina G. Grimes*  
LYLE O. GRIMES NINA G. GRIMES

ACKNOWLEDGEMENT.

STATE OF OREGON ) S.S.  
COUNTY OF DOUGLAS )

ON THE 12<sup>th</sup> DAY OF November 1952, BEFORE ME APPEARED LYLE O. GRIMES AND NINA G. GRIMES, TO ME PERSONALLY KNOWN, WHO BEING DULY SWORN, DID SAY THAT THEY ARE THE LAWFUL OWNERS OF THE TRACT OF LAND DELINEATED ON THE ANNEXED PLAT, AND THAT THEY DO HEREBY ACKNOWLEDGE THAT THEY SIGNED THE ACCOMPANYING DEDICATION AS THEIR FREE AND VOLUNTARY ACT AND DEED.

IN TESTIMONY WHEREOF, I HAVE HEREBY SET MY HAND AND AFFIXED MY OFFICIAL SEAL THIS DAY AND YEAR ABOVE WRITTEN.

*Roy Agee*  
COUNTY CLERK.

ELK CREEK HOMESITES EXTENSION  
A PORTION OF THE THOS. STILLWELL D.L.C. NO. 45, T 225, R 6W, W.M.

ARTHUR R. EVANS REG. PROFESSIONAL ENGINEER.  
ROSEBURG, OREGON.

FILED *Dec. 10<sup>th</sup>* 1952  
*Roy Agee*  
COUNTY CLERK