

HAIL'S HARBOR No. 2

IN SECTIONS 6, & 7, T22S., R10W., W.M.

A. R. EVANS
ROSEBURG,

REG. PROFESSIONAL ENGINEER
OREGON

SCALE 1" = 100'

CERTIFICATE OF ENGINEER

STATE OF OREGON) S.S.
COUNTY OF DOUGLAS)

I, ARTHUR R. EVANS, BEING FIRST DULY SWORN, DEPOSE AND SAY THAT I HAVE CORRECTLY SURVEYED AND MARKED WITH PROPER MONUMENTS THE LANDS DELINEATED ON THE ANNEXED PLAT, OF WHICH THE FOLLOWING IS A TRUE AND CORRECT DESCRIPTION:— BEGINNING AT THE INITIAL POINT, A 2"x36" GALV. I.P., 6" BELOW GROUND, FROM WHICH THE 1/4 COR. TO SECTIONS 6, 7, T22S., R10W., W.M. BEARS N57°22'W; 166.3 FT.; THENCE N36°40'30"E 346.4 FT., TO A 1" I.P. ON THE HIGH BANK OF THE UMPQUA RIVER, AND CONTINUING 30.0 FT. TO THE LOW BANK OF SAID RIVER; THENCE, FOLLOWING SAID LOW BANK, UPSTREAM, AS FOLLOWS: 548°18'E 100.4 FT., 543°08'E 101.6 FT., 542°28'E 101.8 FT., 543°45'E 101.4 FT., 546°14'E 201.5 FT., 541°47'E 204.1 FT., 536°20'E 209.1 FT., & 532°49'E 264.6 FT.; THENCE S36°40'30"W 30.0 FT. TO A 1 1/4" I.P. ON THE HIGH BANK OF SAID RIVER, AND CONTINUING 29.8 FT. TO A 1/4" I.P. IN THE NORTHERLY R/W LINE OF THE UMPQUA (STATE NO. 38) HIGHWAY; THENCE, FOLLOWING SAID HIGHWAY R/W LINE, N47°40'W 248.9 FT., N53°59'W 600.0 FT., & N62°10'W 404.8 FT.; THENCE N36°40'30"E 9.7 FT., TO THE POINT OF BEGINNING, CONTAINING 6.38 ACRES, MORE OR LESS, IN SECTIONS 6, & 7, T22S., R10W., W.M., DOUGLAS COUNTY, OREGON.

OREGON No. 2741.
Nov. 7, 1947.

Arthur R. Evans
ARTHUR R. EVANS
REG. PROF. ENGINEER.

SUBSCRIBED AND SWORN TO BEFORE ME THIS 15TH DAY OF May 1952.

Roy Agee
ROY AGEE
COUNTY CLERK.



DEDICATION.
KNOW ALL MEN BY THESE PRESENTS:— THAT WE, D. D. HAIL, AND EDNA MAE HAIL, HUSBAND AND WIFE, OWNERS OF THE LANDS REPRESENTED AND DESCRIBED ON THE ANNEXED PLAT, HAVE CAUSED THE SAME TO BE SURVEYED AND PLATTED BY THE NAME OF "HAIL'S HARBOR No. 2".
IN TESTIMONY WHEREOF, THE SAID D. D. HAIL AND EDNA MAE HAIL HAVE HEREUNTO SET THEIR HANDS THIS 29TH DAY OF May 1952.

D. D. Hail
D. D. HAIL.

Edna Mae Hail
EDNA MAE HAIL.

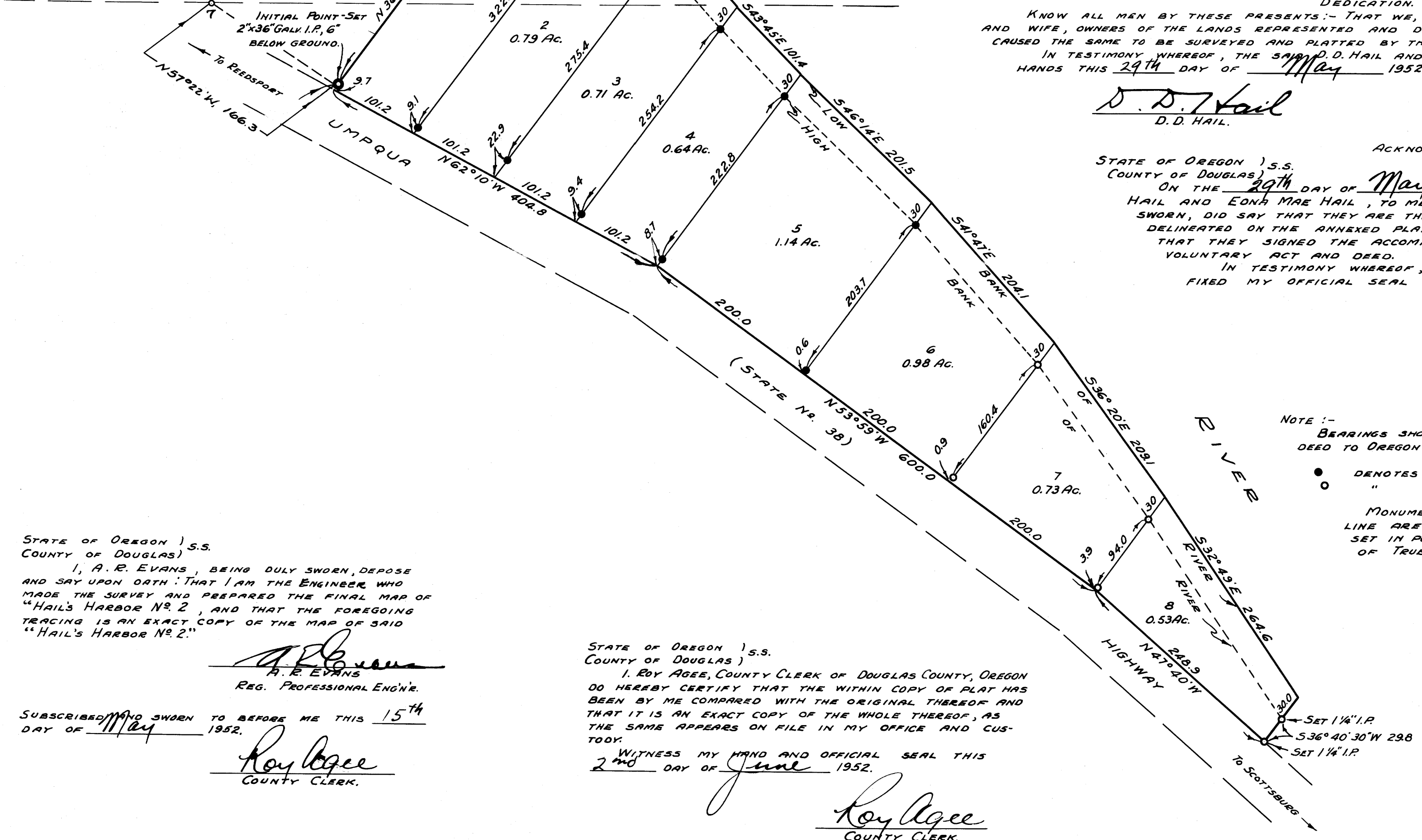
ACKNOWLEDGEMENT
STATE OF OREGON) S.S.
COUNTY OF DOUGLAS)
ON THE 29TH DAY OF May 1952, BEFORE ME APPEARED D. D. HAIL AND EDNA MAE HAIL, TO ME PERSONALLY KNOWN, WHO BEING DULY SWORN, DID SAY THAT THEY ARE THE LAWFUL OWNERS OF THE TRACT OF LAND DELINEATED ON THE ANNEXED PLAT, AND THAT THEY DO HEREBY ACKNOWLEDGE THAT THEY SIGNED THE ACCOMPANYING DEDICATION AS THEIR FREE AND VOLUNTARY ACT AND DEED.
IN TESTIMONY WHEREOF, I HAVE HEREUNTO SET MY HAND AND AFFIXED MY OFFICIAL SEAL THIS DAY AND YEAR ABOVE WRITTEN.

Roy Agee
ROY AGEE
COUNTY CLERK.

NOTE:—
BEARINGS SHOWN ARE TRUE, BASED ON DATA SHOWN IN DEED TO OREGON STATE HIGHWAY COMMISSION.
● DENOTES 1/2" I.P. SET.
○ " 3/4" I.P. " , EXCEPT AS NOTED.
MONUMENTS SHOWN ADJACENT TO HIGHWAY R/W LINE ARE WITNESS CORNERS TO LOTS ONLY, AND WERE SET IN POSITIONS SHOWN, DUE TO INACCESSIBILITY OF TRUE CORNERS.

APPROVALS
By Order of the County Court
APPROVED June 2 1952
W. H. Hill
COUNTY JUDGE.
E. Metzger
COMMISSIONER.
APPROVED May 29 1952
Paul J. Young
COUNTY SURVEYOR.
APPROVED JUNE 2 1952
Ned Dixon
COUNTY ASSESSOR.

1/4 COR. SEC. 6, 7, T22S., R10W.
SET 1/4" BOLT FROM O.B.T.
24" MAPLE, N57°E, 17 LKS.
Mkd. 20" MAPLE, N8°W, 142.6 FT.



STATE OF OREGON) S.S.
COUNTY OF DOUGLAS)
I, A. R. EVANS, BEING DULY SWORN, DEPOSE AND SAY UPON OATH THAT I AM THE ENGINEER WHO MADE THE SURVEY AND PREPARED THE FINAL MAP OF "HAIL'S HARBOR No. 2", AND THAT THE FOREGOING TRACING IS AN EXACT COPY OF THE MAP OF SAID "HAIL'S HARBOR No. 2".

A. R. Evans
A. R. EVANS
REG. PROFESSIONAL ENG'NR.

SUBSCRIBED AND SWORN TO BEFORE ME THIS 15TH DAY OF May 1952.

Roy Agee
ROY AGEE
COUNTY CLERK.

STATE OF OREGON) S.S.
COUNTY OF DOUGLAS)
I, ROY AGEE, COUNTY CLERK OF DOUGLAS COUNTY, OREGON DO HEREBY CERTIFY THAT THE WITHIN COPY OF PLAT HAS BEEN BY ME COMPARED WITH THE ORIGINAL THEREOF AND THAT IT IS AN EXACT COPY OF THE WHOLE THEREOF, AS THE SAME APPEARS ON FILE IN MY OFFICE AND CUSTODY.

WITNESS MY HAND AND OFFICIAL SEAL THIS 2ND DAY OF June 1952.

Roy Agee
ROY AGEE
COUNTY CLERK.

FILED June 2nd 1952.
Roy Agee
COUNTY CLERK.