

# RIVER BEND ACRES - PLAT "A"

## SECTION 23-T.26S-R.6W-W.M. DOUGLAS Co. - OREGON

### CERTIFICATE OF SURVEYOR

I, Floyd C. Frear, being first duly sworn depose and say that I have correctly surveyed and marked with proper monuments the lands shown on the annexed plat of which the following is a true and correct description to wit:-

Beginning at a 2"x36" Iron pipe on the North right of way line of County Road No 189 and from which the Interior "L" Corner of James McKinney D.L.C. No 47 in Section 23 - T.26S - R.6W - W.M. Douglas County, Oregon, bears S.0°17'E. 3263.2 feet., Thence N16°11'E. 70 ft., thence N.42°10'E. 180 ft., thence S.52°36'E. 276.3 ft., thence N.50°43'E. 375.6 ft., thence N.41°04'W. 290 ft., thence S.50°43'W. 208.2 ft., thence N.41°25'W. 250 ft., thence S.89°39'W. 420 ft., thence S.36°24'W. 270 ft., to the N.W. Cor Lot 6 "RIVER BEND ACRES" thence N.25°28'W. 350.2 ft. to the South Line "RIVER BEND ROAD", thence along said line as follows:- N.35°30'E. 197 ft., N.45°E. 193.7 ft., N.72°08'E. 277 ft., S.81°45'E. 292 ft., S.74°E. 82 ft., S.53°48'E. 291 ft., S.41°04'E. 333 ft., S.48°56'W. 10 ft., S.41°04'E. 60 ft., thence N.52°23'E. 615 ft. to the south side of the North Umpqua River, thence along same as follows:- S.46°54'E. 220 ft., S.9°44'E. 655.5 ft., thence S.67°05'W. 730.8 ft., thence S.14°56'E. 220.5 ft. to the North Line Co. Rd. 189 thence along same as follows:- N.87°30'W. 262 ft., N.46°09'W. 388 ft., N.72°49'W. 362.4 ft., N.27°55'W. 54 ft., to the place of beginning and containing 33.07 acres of land more or less.

Floyd C. Frear REG. ENG'R. No 352

Certificate of Surveyor, subscribed and sworn to before me this 21<sup>st</sup> day of August 1950 Roy Agee County Clerk

### DEDICATION

KNOW ALL MEN BY THESE PRESENTS:- That we George C. Blanck and Donna B. Blanck owners of the lands shown on the annexed plat, have caused the same to be surveyed and platted as and by the name of RIVER BEND ACRES - PLAT "A" and we do hereby dedicate to the public use forever the roads shown thereon

George C. Blanck  
Donna B. Blanck

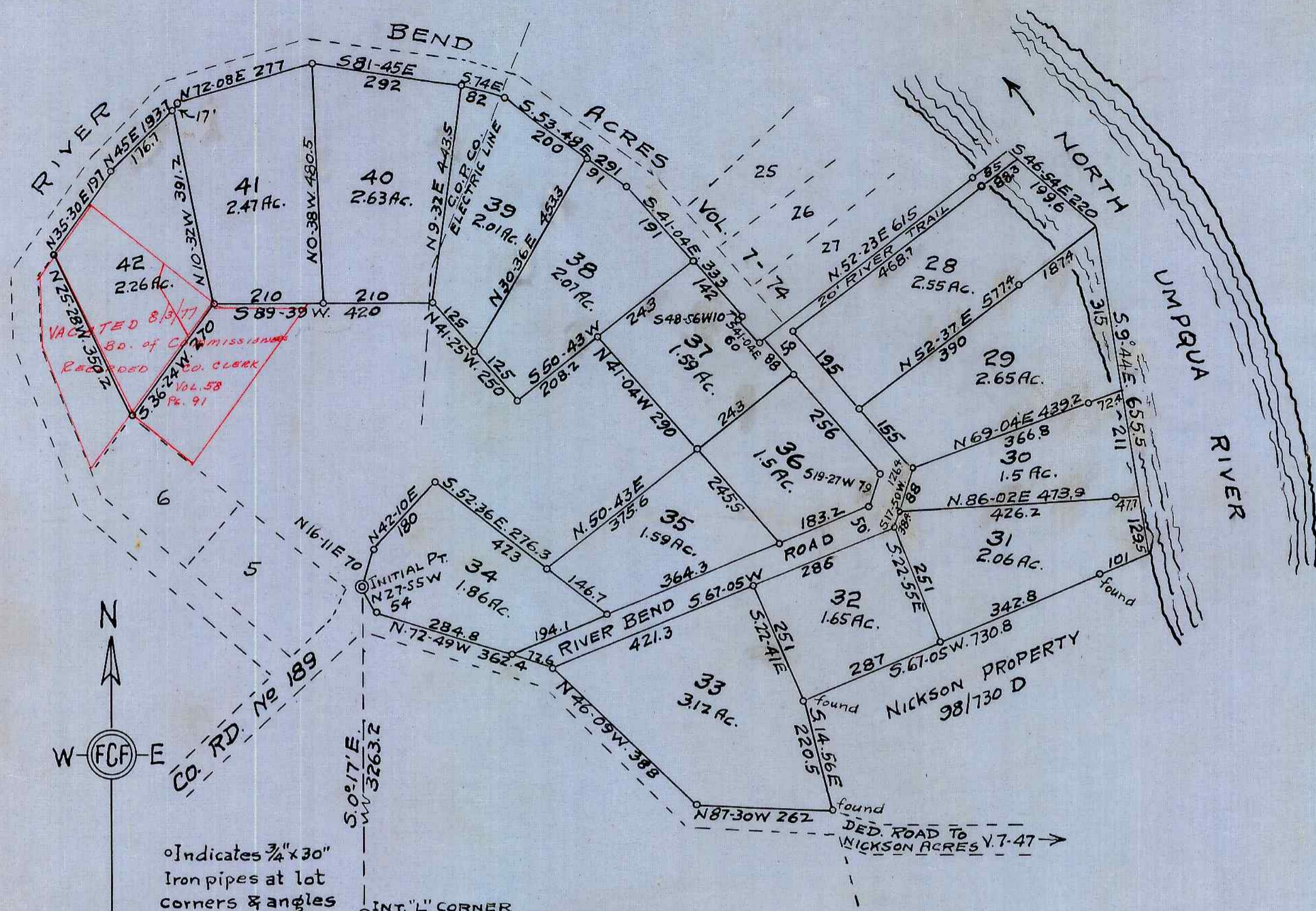
### ACKNOWLEDGEMENT

State of Oregon }  
County of Douglas } ss On the 21<sup>st</sup> day of August 1950 appeared George C. Blanck and Donna B. Blanck husband and wife to me personally known, who being duly sworn did say that they are the owners of the lands shown on the annexed plat and acknowledged the adjacent instrument was their free act and deed.

IN TESTIMONY WHEREOF I hereunto set my hand and seal the day and year above written.  
Roy Agee  
County Clerk



FILED August 29<sup>th</sup> 1950  
Roy Agee  
County Clerk



### APPROVALS

- APPROVED August 23 1950  
BY ORDER OF THE COUNTY COURT
- D. Busenbark County Judge  
L. V. Beckley Co. Commissioner  
P. G. Baker Co. Commissioner
- APPROVED August 23 1950  
Med Dixon County Assessor
- APPROVED August 23 1950  
Floyd C. Frear County Surveyor

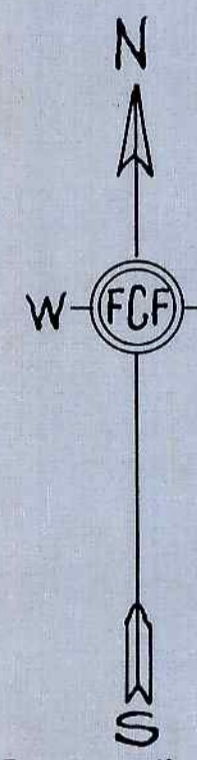
### ROSEBURG PLANNING COMMISSION

- APPROVED July 24<sup>th</sup> 1950
- Vita Knight Secretary  
Fred B. Spurgeon President

State of Oregon }  
County of Douglas } ss I, Floyd C. Frear, being duly sworn depose and say that I am the surveyor who surveyed and prepared the plat of "RIVER BEND ACRES PLAT "A" and that the annexed tracing is an exact copy of the final plat thereof.

Floyd C. Frear  
Subscribed and sworn to before me this 21<sup>st</sup> day of August 1950  
Roy Agee County Clerk

State of Oregon }  
County of Douglas } ss I, Roy Agee, County Clerk of Douglas County, Oregon, do hereby certify that the within copy of plat has been by me compared with the original thereof and that it is an exact copy thereof as the same appears on file in my office and custody. Witness my hand and official seal this 29<sup>th</sup> day of August 1950  
Roy Agee County Clerk



o Indicates 3/4" x 30" Iron pipes at lot corners & angles

INT. "L" CORNER  
Jas. McKinney D.L.C. 47  
SEC. 23 - T. 26 - R. 6W - W.M.