

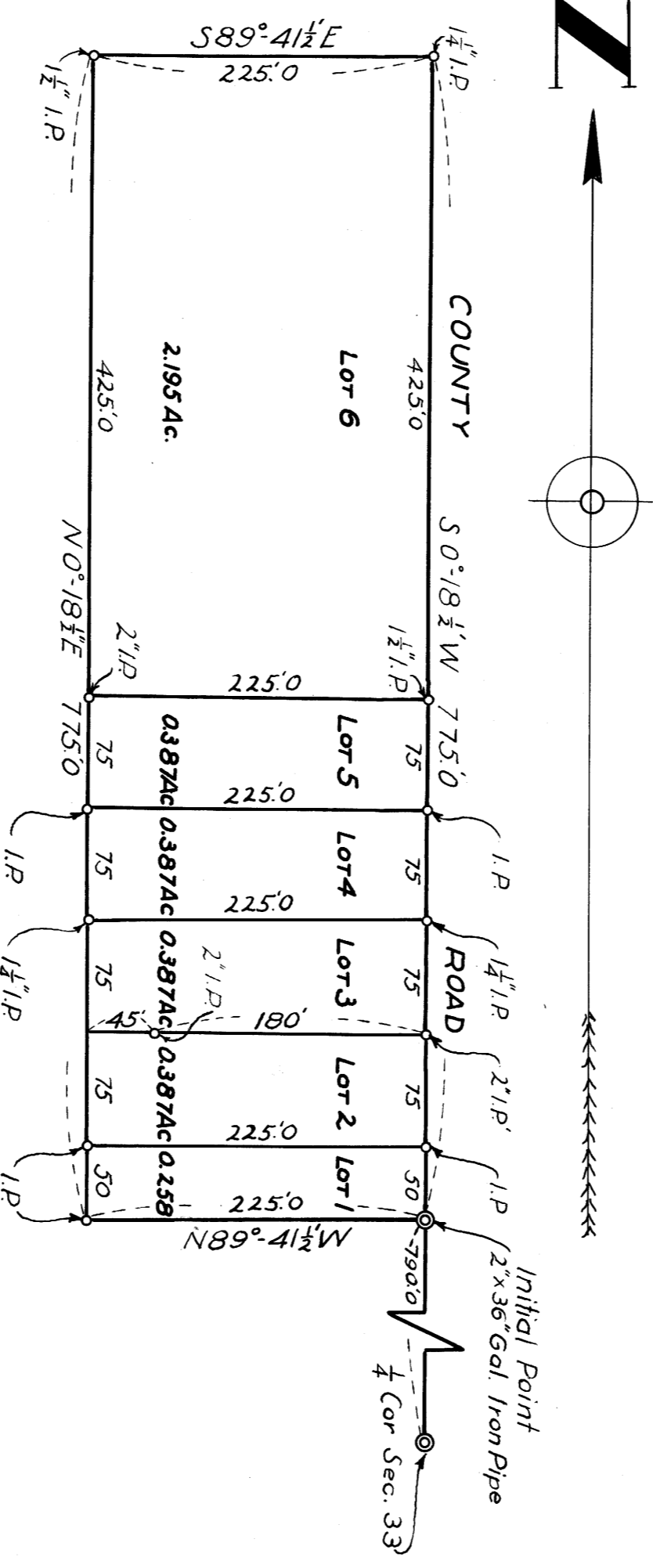
# BILLIUPS'S

## SUBDIVISION

SEC. 33, T32S, R6W, WM

GLENDALE, OREGON

SCALE 1 inch = 100 feet



APPROVED August 4<sup>th</sup> 1947

COMMON COUNCIL, CITY OF GLENDALE, BY  
*E. L. Sparks*  
MAYOR

STATE OF OREGON }  
COUNTY OF DOUGLAS } S.S.

I, Samuel H. Bellah, being duly sworn depose and say upon oath: That I am the surveyor who made the survey and prepared the final map of "Billiups' Subdivision of Glendale, Oregon," and that the foregoing tracing is an exact copy of the map of said "Billiups' Subdivision."

*Samuel H. Bellah*  
Registered Civil Engineer

Subscribed and sworn to before me this 15<sup>th</sup> day of August 1947

*Joy Lee*  
COUNTY CLERK

### CERTIFICATE OF SURVEYOR

STATE OF OREGON }  
COUNTY OF DOUGLAS } S.S.

I, Samuel H. Bellah, being duly sworn, depose and say that I have correctly surveyed and marked with proper monuments on the ground the lands shown on the annexed plat of which the following is a true and correct description:

Beginning at a 2" x 36" Gal. Iron Pipe from which the 1/4 Corner to Sec 33, T32S, R6W, WM, bears S0°18 1/2'W, 790.0ft; Thence N89°41 1/2'W, 225.0ft; Thence N0°18 1/2'E, 775.0ft; Thence S89°41 1/2'E, 225.0ft; Thence S0°18 1/2'W, 775.0ft; to beginning, containing 4.00 acres more or less in Douglas County, Oregon.

*Samuel H. Bellah*  
Registered Civil Engineer

Subscribed and sworn to before me this 30<sup>th</sup> day of July 1947

*Joy Lee*  
COUNTY CLERK

APPROVED August 15<sup>th</sup> 1947

*D. B. ...*  
COUNTY JUDGE

APPROVED 15<sup>th</sup> August 1947

*Neil ...*  
COUNTY ASSESSOR

APPROVED August 15<sup>th</sup> 1947

*Samuel ...*  
COUNTY SURVEYOR

FILED August 15<sup>th</sup> 1947

*Joy Lee*  
COUNTY CLERK

### DEDICATION

STATE OF OREGON }  
COUNTY OF DOUGLAS } S.S.

KNOW ALL MEN BY THESE PRESENTS, that we, Jesse Lorenzo Billiups, Nellie Lee Billiups, Husband and wife, owners of the lands represented and described on the annexed plat, have caused the same to be surveyed and platted by the name of "Billiups' Subdivision of Glendale, Oregon," and we hereby dedicate to the use of the public forever the streets and roads shown thereon.

IN TESTIMONY WHEREOF, the said Jesse Lorenzo Billiups, and Nellie Lee Billiups, have hereunto set their hand and seal this 30<sup>th</sup> day of August 1947

*Jesse Lorenzo Billiups*  
*Nellie Lee Billiups*

### ACKNOWLEDGEMENT

STATE OF OREGON }  
COUNTY OF DOUGLAS } S.S.

On the 2<sup>nd</sup> day of August 1947, before me appeared Jesse Lorenzo Billiups and Nellie Lee Billiups, to me personally known, who being duly sworn, did say that they are the lawful owners of the tract of land delineated on the annexed plat and that they do hereby acknowledge that they signed the accompanying dedication as their free and voluntary act and deed.

IN TESTIMONY WHEREOF, I have hereunto set my hand and affixed my official seal this day and year above written

*Joy Lee*  
COUNTY CLERK

