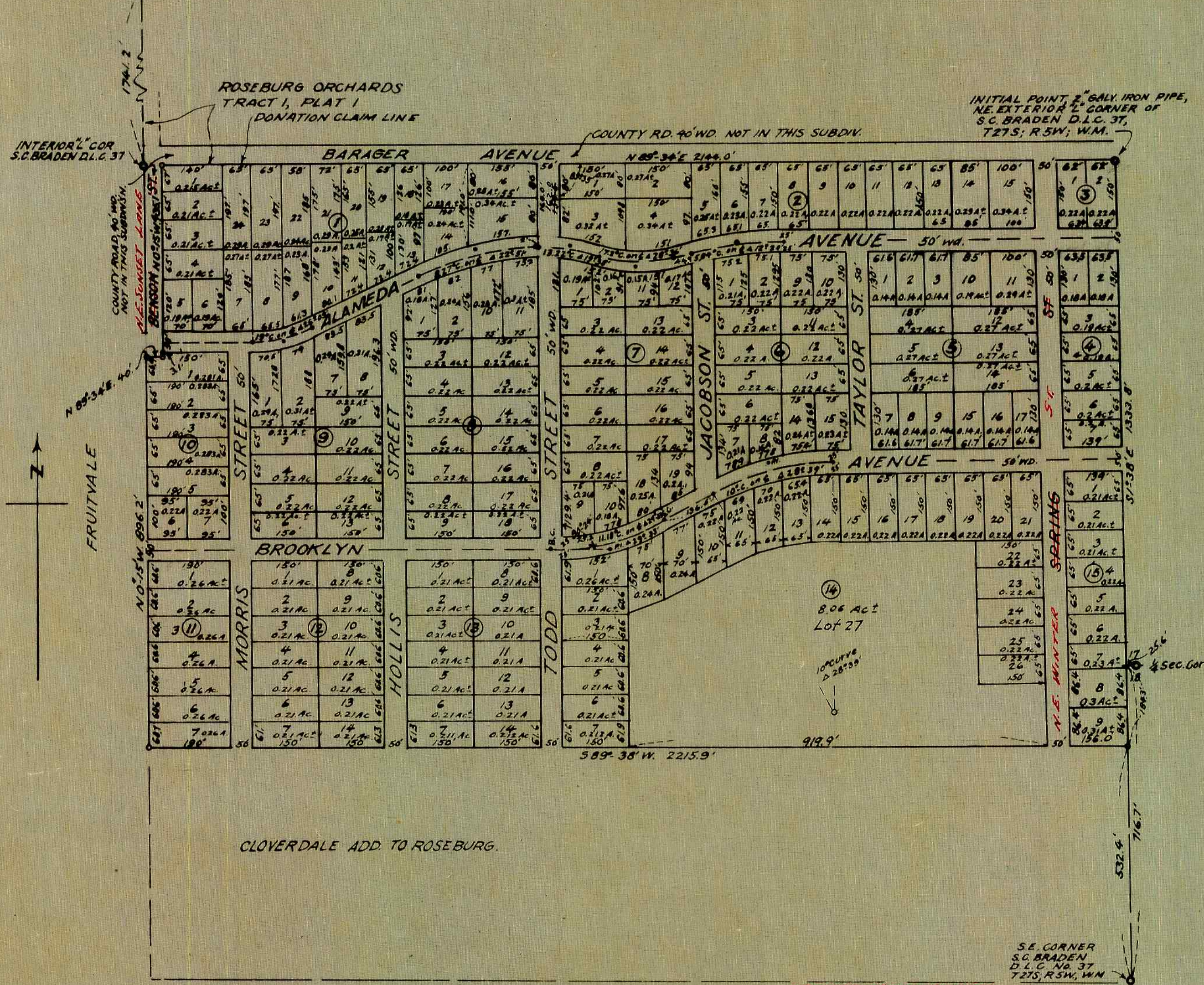


N.E. CORNER S.C. BRADEN D.L.C. 37 T.27S., R.5W.



DEDICATION

Know all men by these presents: That the Roseburg Homes Inc. which is a corporation duly incorporated and existing under and by virtue of the laws of the State of Oregon, in conformity with an order made and entered by its Board of Directors, owners of real property represented and described in the within map and being located in sections 7 and 13, T.27S., R. 5W, Douglas County, Oregon, have laid out and established and does by these presents plat and establish the said tract of real property as and by the name of First Subdivision of Cloverdale Addition to Roseburg and it does hereby declare that the annexed map and plat is a true and correct map and plat of First Subdivision of Cloverdale Addition to Roseburg and of said parcel of real property so by it laid out and platted and established as First Subdivision of Cloverdale Addition to Roseburg and that the lots and blocks shown and designated on the within map and plat are lots and blocks of said first subdivision and said Roseburg Homes Inc. does hereby dedicate to the public use forever such streets and avenues designated on the within map and plat.

IN WITNESS WHEREOF the said Roseburg Homes Inc. does hereby cause this instrument to be signed by its president and secretary upon an order of its Board of Directors and has caused its corporate seal to be hereby attached

ROSEBURG HOMES INC.
 by John D. Todd President
 by Gordon T. Todd Secretary

ACKNOWLEDGEMENT

State of Oregon } ss.
 County of Douglas }
 On this 4th day of December 1946 before me appeared John D. Todd, to me personally known, who being duly sworn did say that he is the President and Gordon T. Todd, to me personally known, who being duly sworn did say that he is the secretary of the Roseburg Homes Inc. which is a corporation and that the seal affixed to the within instrument is the corporate seal of said corporation and that said instrument was signed and sealed on behalf of said corporation by authority of its Board of Directors and the said John D. Todd as President and Gordon T. Todd as Secretary acknowledged said instrument to be the free act and deed of said corporation.
 IN TESTIMONY WHEREOF, I have hereto set my hand and affixed my official seal the day and year first above in this certificate written

Roy Agee
 County Clerk

SURVEYOR'S CERTIFICATE

State of Oregon } ss.
 County of Douglas }
 I, Arthur Boyer, being first duly sworn depose and say that I have surveyed the land represented on the within map and plat of First Subdivision of Cloverdale Addition to Roseburg and that the survey there of is in all respects correct and true and that I have planted a monument indicating the Initial Point of such survey which is a two inch galvanized iron pipe, set six inches below the surface of the ground and that the aforesaid land surveyed by me is more particularly described as follows: Beginning at the initial point, a 2 inch galvanized iron pipe set at the North East Exterior L Corner of the S.C. Braden Donation Land Claim No. 37, T.27S., R. 5W, W.M., and running thence S. 1° 38' E. 1333.8 ft. to an iron pipe, thence S. 89° 38' W. 2215.9 ft. to an iron pipe on the east line of Fruitvale, thence N. 0° 15' W. 896.2 ft. along said east line of Fruitvale to an iron pipe on the south line of a county road, thence N. 89° 34' E. 400.0 ft., along south line of said road to an iron pipe, thence N. 0° 15' W. 435.1 ft. along east line of said road to the south line of said road, thence N. 89° 34' E. 2144.0 ft., along south side of said road to the place of beginning, being situated in sections 7 and 13, T.27S., R. 5W, Willamette Meridian, Douglas County, Oregon.

Arthur Boyer
 Reg. Prof. Civil Engr.
 Subscribed and sworn to before me this 4th day of December, 1946
Roy Agee
 County Clerk

Approved Dec. 4 1946
Bert Fleming
 County Surveyor
 Approved Dec. 4 1946
Ned Dixon
 County Assessor
 Approved Dec. 4 1946
D. H. Busenbark
 County Judge
 Approved Dec. 4 1946
Arthur Boyer
 City Engineer, Roseburg, Ore

State of Oregon } ss.
 County of Douglas }
 I, Roy Agee, County Clerk of Douglas County, Ore. hereby certify that this copy of FIRST SUBDIVISION OF CLOVERDALE ADDITION TO ROSEBURG has been compared by me with the original thereof and that it is a correct copy therefrom and of the whole of such original as filed in my office and custody
 IN WITNESS WHEREOF, I have hereto set my hand and seal this 4th day of December 1946.
Roy Agee
 County Clerk

Filed December 4th 1946
Roy Agee
 County Clerk

FIRST SUBDIVISION OF
 CLOVERDALE ADDITION TO ROSEBURG
 NOV. 1946 JB SCALE, 1" = 200'