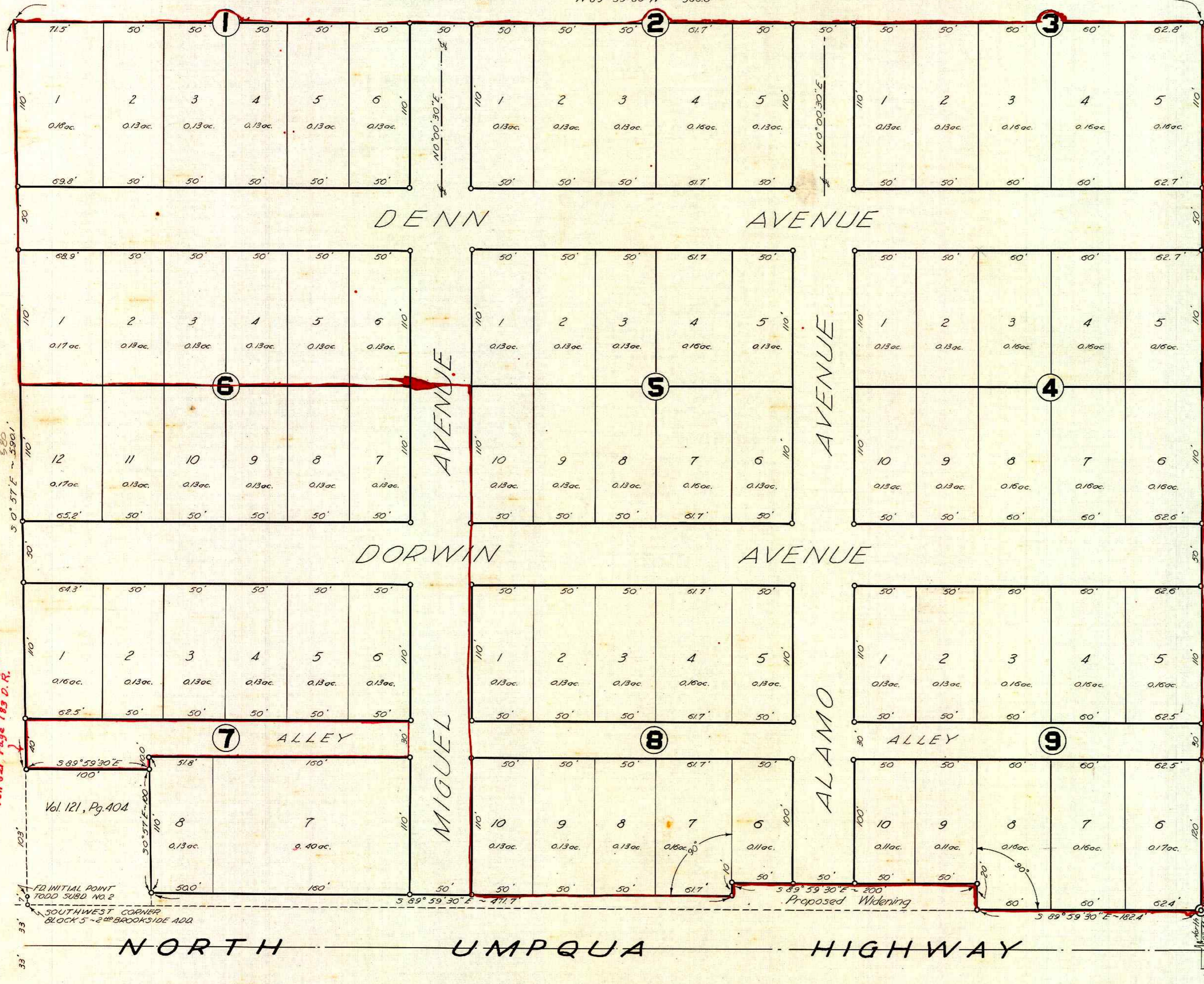


Portion outlined in red, vacated by order of County Court 12-22-48 Filed - 12-22-48 - Vol. 162 - page 769, Deed Records.

# "DENN SUBDIVISION"

of Blocks 5 & 6 & 280 links off the West side of Block 7, 2<sup>nd</sup> Brookside Addition to the City of Roseburg

N 89° 59' 30" W ~ 966.0'



## SURVEYOR'S CERTIFICATE

I, Richard R. Ecker, being duly sworn, depose and say that I have surveyed and marked with proper monuments the lands shown on the annexed plat of which the following is a true and correct description:

Beginning at a point, a 2" x 3/8" galv iron pipe on the North R/W line of the North Umpqua Highway which bears North, 23.44 chains and West, 9.68 chains from the southwest corner of the H. Howe D.L.C. No 45, T27S, R5W, W1M; thence N0°03'30"E, 690.0' parallel to the East boundary of Block 6, 2<sup>nd</sup> Brookside Addition to the City of Roseburg; thence N89°59'30"W, 966.0' to the West boundary of Block 5 of said addition; thence S0°57'E, 590.1' along said West boundary; thence S89°59'30"E, 100.0'; thence S0°57'30"E, 1000' to a point on the north R/W line of the proposed widened highway; thence along the North line of the proposed widening, S89°59'30"E, 471.7'; N0°00'30"E, 10.0'; S89°59'30"E, 200.0'; S0°00'30"W, 20.0' and S89°59'30"E, 182.4' to the place of beginning containing 15.0 acres all situate in the 2<sup>nd</sup> Brookside Addition to the City of Roseburg, Douglas County, Oregon.

Subscribed and sworn before me this 5<sup>th</sup> day of Sept. 1946.  
 Roy Agee  
 COUNTY CLERK



o denotes 1/2" iron pins.

## ACKNOWLEDGMENT

State of Oregon ss On the 5<sup>th</sup> day of Sept 1946  
 County of Douglas before me appeared  
 LENA DENN, a widow  
 to me personally know, who being  
 duly sworn, did say that she is the owner of the land shown  
 on the annexed plat and acknowledged that the above instru-  
 ment was her free act and deed.

IN TESTIMONY WHEREOF I have hereunto set my hand  
 and affixed my official seal hereto on the day of the  
 year above written.  
 Roy Agee  
 COUNTY CLERK

## DEDICATION

KNOW ALL MEN BY THESE PRESENTS that  
 LENA DENN, a widow  
 owner of the lands shown on the annexed plat, has caused  
 the same to be surveyed and platted as and by the  
 name of:  
 "DENN SUBDIVISION"  
 and I hereby  
 dedicate to the public use forever the roads shown hereon.  
 Lena Denn  
 LENA DENN

FILED this 6<sup>th</sup> day of Sept 1946  
 Roy Agee  
 COUNTY CLERK

Initial Point - Set 2" x 3/8" galv Iron Pipe 6" beneath surface

State of Oregon ss I, Roy Agee, County Clerk  
 County of Douglas hereby certify that the  
 foregoing plat copy of "DENN SUBDIVISION" has  
 been compared by me with the original thereof,  
 and that it is a correct transcript therefrom,  
 and of the whole of such original as the same  
 appeared on file in my office and custody.

IN TESTIMONY WHEREOF I have hereunto  
 set my hand and affixed my official seal  
 this 6<sup>th</sup> day of Sept 1946.  
 Roy Agee  
 COUNTY CLERK

SCALE: 1" = 60'  
 AUGUST 1946

APPROVED BY THE COMMON COUNCIL of the CITY OF ROSEBURG  
 this \_\_\_ day of \_\_\_ 1946 by  
 CITY RECORDER  
 APPROVED this 4<sup>th</sup> day of Sept. 1946  
 CITY ENGINEER

APPROVED this 5<sup>th</sup> day of Aug. 1946  
 COUNTY SURVEYOR  
 APPROVED this 5<sup>th</sup> day of Sept. 1946  
 COUNTY JUDGE  
 APPROVED this 5<sup>th</sup> day of Sept 1946  
 COUNTY ASSESSOR