

# RESUBDIVISION OF GADDIS PLAT "A"

DOUGLAS COUNTY, OREGON

SEC. 13, - TWP. 27 S. - RG. 6 W. W. M.

SCALE: 1 INCH = 100 FT.

### CERTIFICATE OF SURVEYOR

I, Edwin S. Woodford, being first duly sworn, depose and say, that I have surveyed and marked with proper monuments the lands shown on the annexed plat of which the following is a true and correct description.

Beginning at a point from which the North west corner of J. HUNTLY D.L.C. No 56 in Township 27 South, Range 6 West of the Willamette Meridian bears North 85° 36' West 658.30 feet; thence, S 2° 36' W, 1202.30 feet; thence, S 2° 19' W 673.29 feet; thence, S 87° 59' E, 636.04 feet; thence, N 2° 50' W, 74.42 feet; thence, N 0° 31' E, 1176.85 feet; thence, N 88° 00' W 139.63 feet; thence, N 0° 31' E, 410.00 feet; thence, N 88° 00' W, 395.65 feet; thence, N 2° 36' E, 214.98 feet; thence, N 88° 00' W, 40.03 feet to the place of beginning and containing 21.92 Acres more or less.

*Edwin S. Woodford*  
CIVIL ENGINEER



### DEDICATION

KNOW ALL MEN BY THESE PRESENTS: That we, HARRY O. PARGETER, and MARY L. PARGETER, wife, and WILLIAM H. GERRETSEN, and FRANCES M. GERRETSEN, wife, owners of the lands shown on the annexed plat, have caused the same to be surveyed and platted as and by the name of, "GADDIS PLAT A," and we hereby dedicate to the public use forever the roads shown hereon.

*Harry O. Pargeter*  
HARRY O. PARGETER

*Mary L. Pargeter*  
MARY L. PARGETER

*William H. Gerretsen*  
WILLIAM H. GERRETSEN

*Frances M. Gerretsen*  
FRANCES M. GERRETSEN

### ACKNOWLEDGMENT

STATE OF OREGON ) ss On the 6th day of July, 1946, before me appeared, HARRY O. PARGETER and MARY L. PARGETER, wife, and WILLIAM H. GERRETSEN and FRANCES M. GERRETSEN, wife, all to me personally known, who being duly sworn did say, that they are the owners of the lands shown on the annexed plat and acknowledged that the adjacent instrument was their free act and deed.

IN TESTIMONY WHEREOF, I have hereunto set my hand and seal the day and year above written.

*Roy Agre*  
COUNTY CLERK

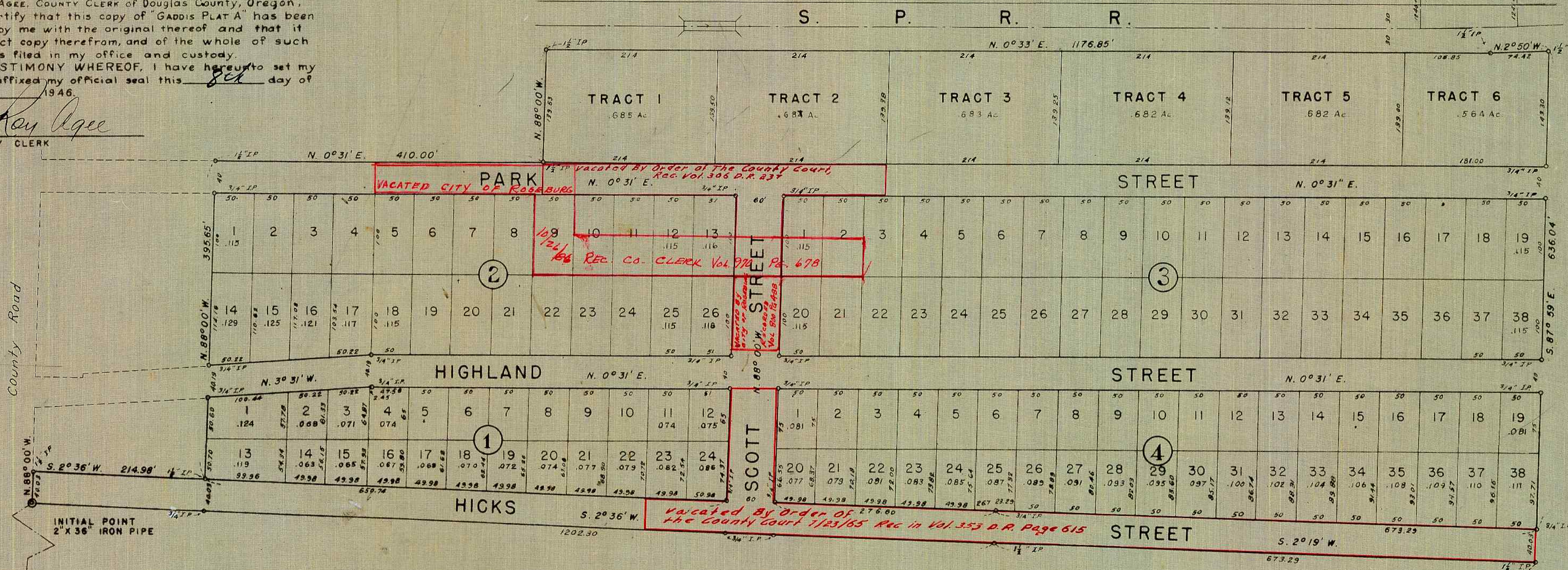
Subscribed and sworn to before me this 20th day of June, 1946.

*Roy Agre*  
COUNTY CLERK

STATE OF OREGON ) ss  
COUNTY OF DOUGLAS )  
I, Roy Agre, COUNTY CLERK of Douglas County, Oregon, hereby certify that this copy of "GADDIS PLAT A" has been compared by me with the original thereof and that it is a correct copy therefrom, and of the whole of such original as filed in my office and custody.

IN TESTIMONY WHEREOF, I have hereunto set my hand and affixed my official seal this 8th day of July, 1946.

*Roy Agre*  
COUNTY CLERK



### APPROVALS

N.W. Cor. J. HUNTLY D.L.C. No 56  
Conc. monument

APPROVED: July 6 1946

*D. Busonbark*  
COUNTY JUDGE

APPROVED: July 6 1946

*W. A. Dixon*  
COUNTY ASSESSOR

APPROVED: July 6 1946

*Edwin S. Woodford*  
COUNTY SURVEYOR

APPROVED: JULY 6 1946

*Arthur B. Roseburg*  
ROSEBURG CITY ENGINEER

FILED: July 8th 1946

*Roy Agre*  
COUNTY CLERK