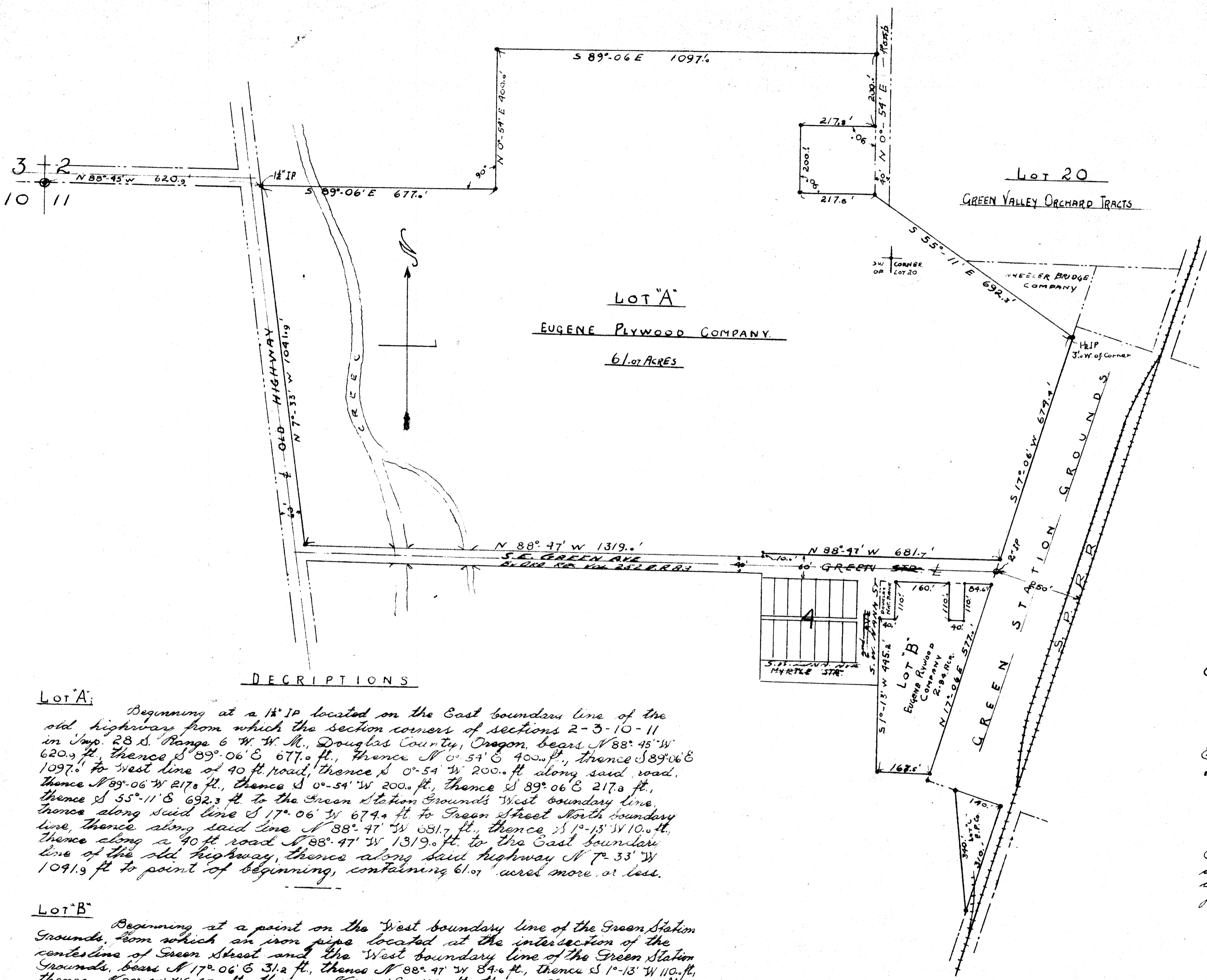


State of Oregon } SS
 County of Douglas }
 I, Fred M. Darby, County Surveyor of Douglas County Oregon, do hereby certify that this print is a true and correct copy made from a tracing which was on file in Volume 5, Page 77 of Plats, Records of County Clerk's Office of Douglas County, Oregon, and that said tracing is now on file in Map File No. M 13 - 74 in my office and custody.
 Subscribed and sworn to before me this 20 day of February, 1959.

Fred M. Darby
 County Surveyor
Alfred J. ...
 County Clerk



DESCRIPTIONS

LOT A:
 Beginning at a 1 1/2" IP located on the East boundary line of the old highway from which the section corners of sections 2-3-10-11 in Twp. 28 S. Range 6 W. W. M., Douglas County, Oregon, bears N 88° 45' W 620.9 ft., thence S 89° 06' E 677.0 ft., thence N 0° 54' E 400.0 ft., thence S 89° 06' E 1097.0 ft. to west line of 40 ft. road, thence S 0° 54' W 200.0 ft. along said road, thence N 89° 06' W 217.0 ft., thence S 0° 54' W 200.0 ft., thence S 89° 06' E 217.0 ft., thence S 55° 11' E 692.3 ft. to the Green Station Grounds West boundary line, thence along said line S 17° 06' W 674.4 ft. to Green Street North boundary line, thence along said line N 88° 47' W 681.7 ft., thence S 1° 13' W 110.0 ft., thence along a 40 ft. road N 88° 47' W 1319.0 ft. to the East boundary line of the old highway, thence along said highway N 7° 33' W 1091.9 ft. to point of beginning, containing 61.07 acres more or less.

LOT B:
 Beginning at a point on the West boundary line of the Green Station Grounds, from which an iron pipe located at the intersection of the centerline of Green Street and the West boundary line of the Green Station Grounds, bears N 17° 06' E 31.2 ft., thence N 88° 47' W 84.6 ft., thence S 1° 13' W 110.0 ft., thence N 88° 47' W 40.0 ft., thence N 1° 13' E 110.0 ft., thence N 88° 47' W 160.0 ft., thence S 1° 13' W 110.0 ft., thence N 88° 47' W 40.0 ft., thence S 1° 13' W 145.2 ft., thence S 88° 47' E 167.5 ft. to the West boundary line of the Green Station Grounds, thence along said boundary line N 17° 06' E 577.0 ft. to point of beginning, containing 2.94 acres more or less, all in Twp. 28 S., Range 6 W. W. M., Douglas County, Oregon.

CERTIFICATE.
 I hereby certify that all distances and courses designated on this plat are correct and that through actual survey monument have been set and all corners staked on the ground.



Subscribed and sworn to before me this 20 day of Dec AD 1943
Ray Cree
 County Clerk

Examined and approved by:
W. L. ...
 County Surveyor

Examined and approved by:
Neal ...
 County Assessor

Examined and approved this 20 day of Dec AD 1943
W. B. ...
 Chairman Douglas County Court

Filed for record at the request of Eugene Plywood Company, this 20 day of Dec AD 1943, at 5 minutes past 4 o'clock and recorded in Vol. 5 of plats, page 77 records of Douglas County.
Ray Cree
 County Clerk

GREEN INDUSTRIAL SITE
 TWP. 28 S. R 6 W. W. M.
 DOUGLAS COUNTY, OREGON.

Scale: 1/2" = 1 FT.