

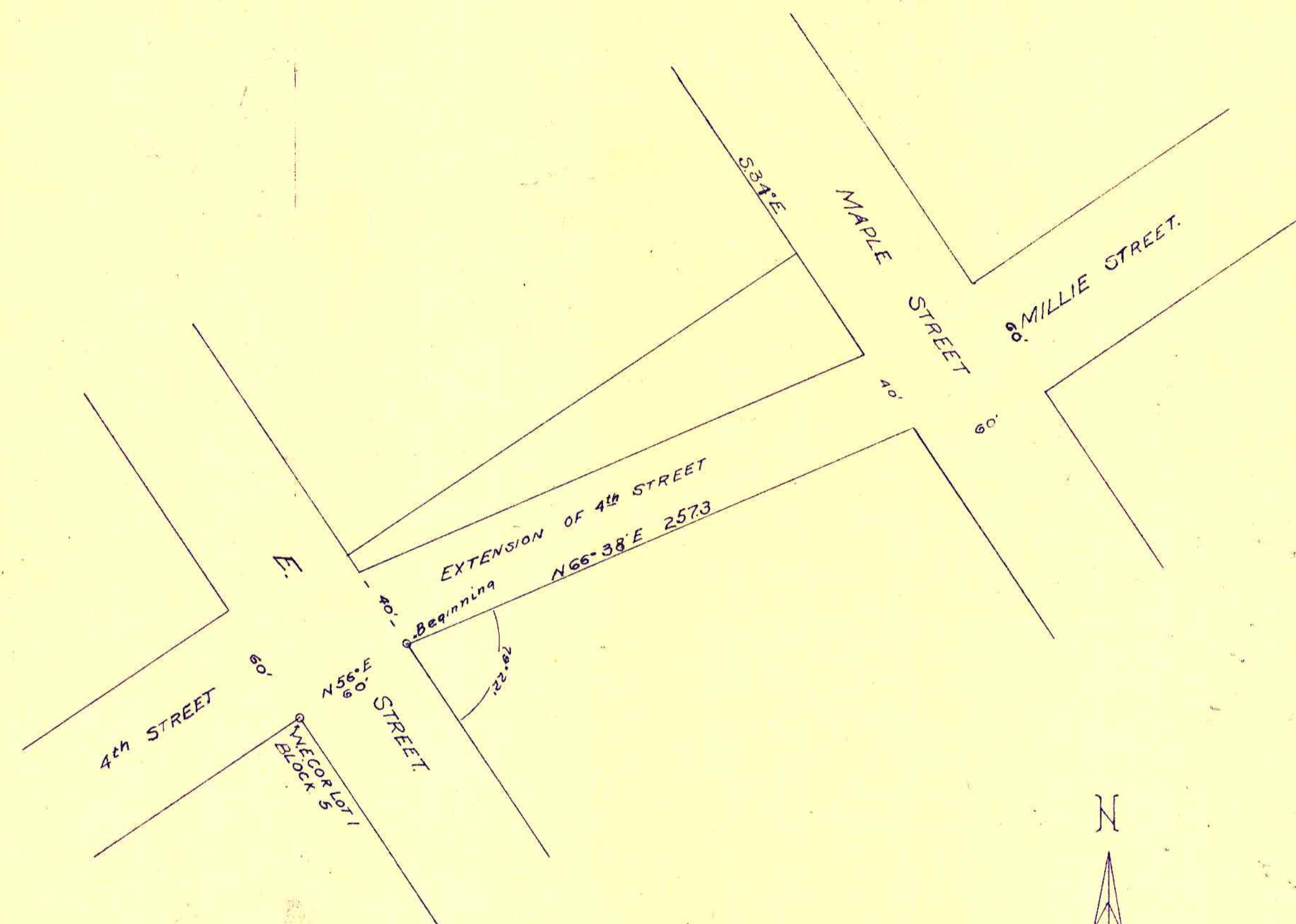
State of Oregon }  
 County of Douglas } SS

I, Fred M. Darby, County Surveyor of Douglas County Oregon, do hereby certify that this print is a true and correct copy made from a tracing which was on file in Volume 5, Page 65 of Plats, Records of County Clerk's Office of Douglas County, Oregon, and that said tracing is now on file in Map File No. M 13-75 in my office and custody.

*Fred M. Darby*  
 County Surveyor

Subscribed and sworn to before me this 4<sup>th</sup> day of February, 1959.

*Chas. Doern*  
 County Clerk



STATE OF OREGON -55  
 COUNTY OF DOUGLAS

I, Frank Cain being first duly sworn depose and say that I have surveyed the land shown on the attached Plat, and known as the extension of Fourth Street, between E. Street and Maple Street, in the City of Riddle, Oregon, and the following is a true and correct return of the survey thereof.

Beginning at a point on the East boundary line of the City of Riddle, Douglas County, Oregon, as shown by Plat recorded April 28, 1882, and deed recorded in Volume 12, page 694, of Deed Records of Douglas County, Oregon, said point of beginning being North 56° East 60 feet from the Northeast corner of Lot 1 in Block 5 as shown upon Plat above mentioned; thence North 34° West 40 feet; thence North 66° 38' East 257.3 feet to the West line of Maple Street, thence South 34° East 40 feet; thence South 66° 38' West 257.3 feet to the place of beginning.

*Frank Cain*  
 City Surveyor

Subscribed and sworn to before me this 14<sup>th</sup> day of September 1931

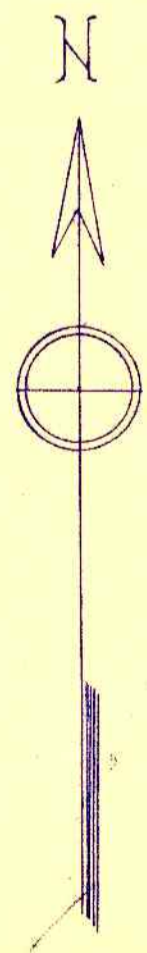
*Wm. H. Stinson*  
 City Recorder

APPROVED SEP. 14, 1931  
*Frank Cain*  
 CITY SURVEYOR

APPROVED *R. C. Collins* 4/9 1932  
 COUNTY ASSESSOR

APPROVED *Alford* 19 1932  
 COUNTY JUDGE  
*R. A. Bunsbach*  
 COUNTY COMMISSIONER  
*C. J. ...*  
 COUNTY COMMISSIONER

FILED *April 19* 1932  
*Ray Lee*  
 COUNTY CLERK



PLAT  
 of  
 EXTENSION OF 4<sup>th</sup> ST. BETWEEN E. ST. AND MAPLE STREET.  
 IN THE  
 CITY OF RIDDLE  
 DOUGLAS COUNTY OREGON.

scale 50 feet to one inch