

RAINBOW ADDITION NO. 2 TO REEDSPORT, DOUGLAS COUNTY, OREGON.

Dedication.

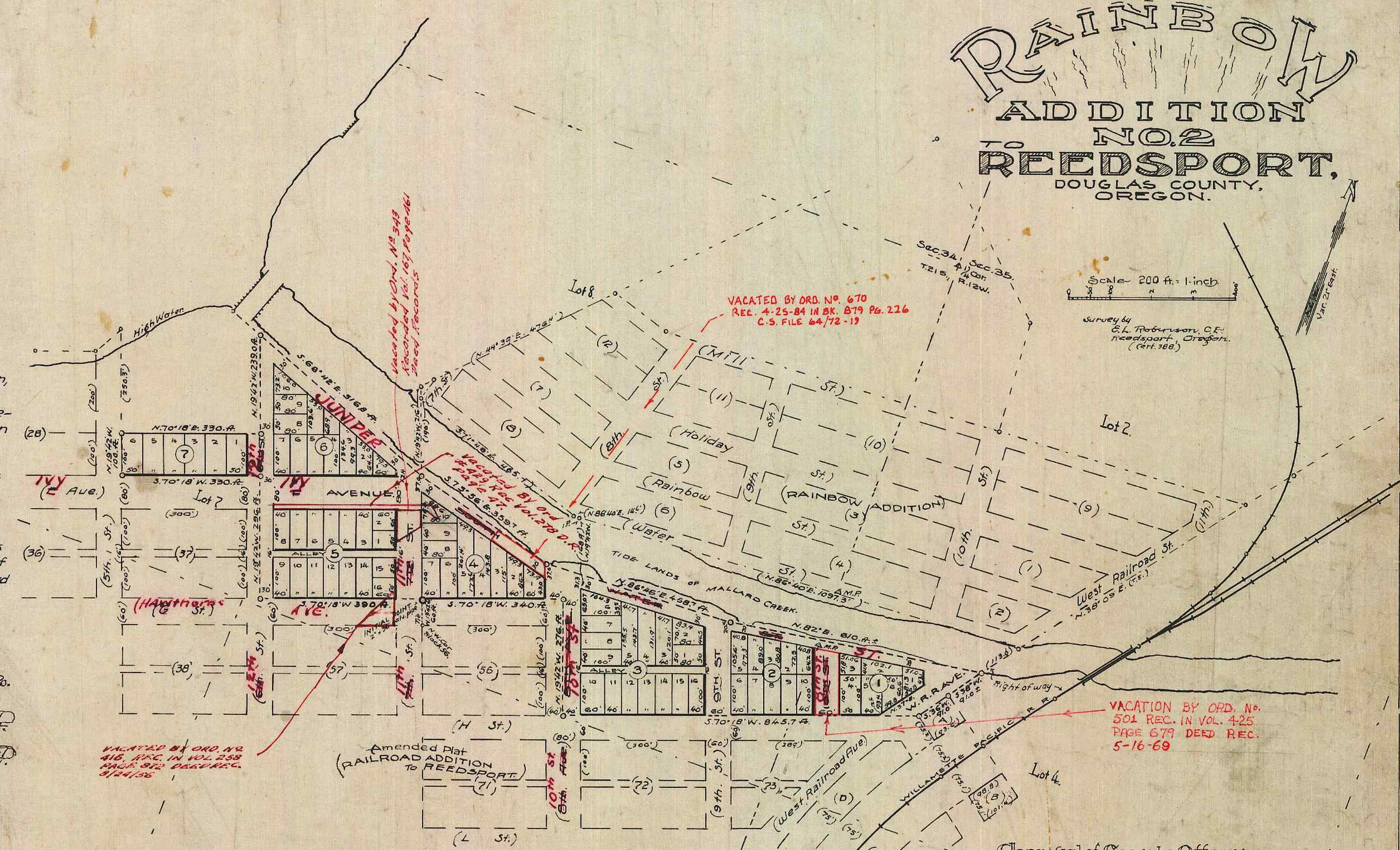
Know all men by these presents, that Chapin-Staples Investment Company, a Corporation, organized and existing under the laws of the State of Oregon the owner and proprietor of the lands hereby platted and who hereby plat the same to be known as RAINBOW ADDITION No. 2 to REEDSPORT, and hereby DEDICATE to the free use of the PUBLIC forever, for Highway purposes, without any reservations or restrictions whatsoever, all the Streets, Avenues and Alleys shown on the annexed map.

In WITNESS whereof, the said Chapin-Staples Investment Company, by a resolution of its board of directors, has caused these presents to be executed by its President and Secretary and its corporate name and seal to be hereto affixed this 29th day of December, A.D. 1920.

Done in the presence of
Chapin-Staples Investment Co.
Isaac E. Staples, President
Stanley D. Chapin, Secretary

State of Oregon, County of Douglas, ss.
Know all men by these presents, that the undersigned, Isaac E. Staples, president and Stanley D. Chapin, secretary of Chapin-Staples Investment Company, to me personally known, upon oath say that they are the individuals who executed the within and foregoing instrument, for and on behalf of said corporation, for the purposes above mentioned and that the same is their free and voluntary act and deed.

In TESTIMONY whereof, I have hereunto affixed my hand and official seal, the day and year first above written.
Notary Public for Oregon
My Commission expires Dec-18-1923



VACATED BY ORD. NO. 416, REC. IN VOL. 258 PAGE 924 DEED REC. 5/14/26

VACATED BY ORD. NO. 670 REC. 4-25-24 IN BK. 879 Pg. 216 C.S. FILE 64/72-17

VACATION BY ORD. NO. 504 REC. IN VOL. 425 PAGE 679 DEED REC. 5-16-69

Affidavit of Surveyor.

I, E.L. Robinson, being first duly sworn, do say that I have correctly surveyed and marked with proper monuments, the lands as represented on the annexed plat, the Initial Point being marked by a 2" x 3/8" galv. iron pipe, which point is N. 19° 42' W. 607 ft. from the N.W. Corner of Block 36 of the Amended Plat of Railroad Addition to ReedSPORT, Douglas County, Oregon; the lands hereby platted being situated in and a part of Lot 7, Section 34, Lot 4, Section 35 and Tide lands fronting thereon, in Twp. 21 S., Range 12 W., Will. Meridian, bounded and described as beginning at the Initial Point and running thence S. 70° 18' W. 390 ft.; thence N. 19° 42' W. 296 ft.; thence S. 70° 18' W. 330 ft.; thence N. 19° 42' W. 100 ft.; thence N. 70° 18' E. 330 ft.; thence N. 19° 42' W. 239 ft.; thence S. 68° 42' E. 316.8 ft.; thence S. 73° 36' E. 359.7 ft.; thence N. 86° 46' E. 458.7 ft.; thence N. 82° E. 610 ft., more or less to the right of way boundary of the Willamette Pac. Railroad; thence S. 38° W. 91 ft.; thence S. 36° W. 91 ft.; thence S. 70° 18' W. 845.7 ft.; thence N. 19° 42' W. 276 ft.; thence S. 70° 18' W. 340 ft. to the place of beginning and containing 10 acres, more or less.

Approval of County Officers.

We the undersigned, County Officers of Douglas County, Oregon, hereby, in our respective official capacities, approve the annexed Plat and Dedication.
Judge
Commissioner
Commissioner
Assessor
Surveyor

CHANGES OF STREET NAMES AUTHORIZED BY CITY ORD. 337 9-8-47 RECORDED VOL. 146 - PAGES 396-402 DEED RECORDS - 10-9-47

Approved, E.L. Robinson, City Engineer
Entered in the Court Journal, in Volume page this day of A.D. 1921
Clerk

Filed for Record Volume 4 page 47 at this 16th day of Feb. A.D. 1921
Attest County Clerk
by Deputy.