

547

PLAT "B"

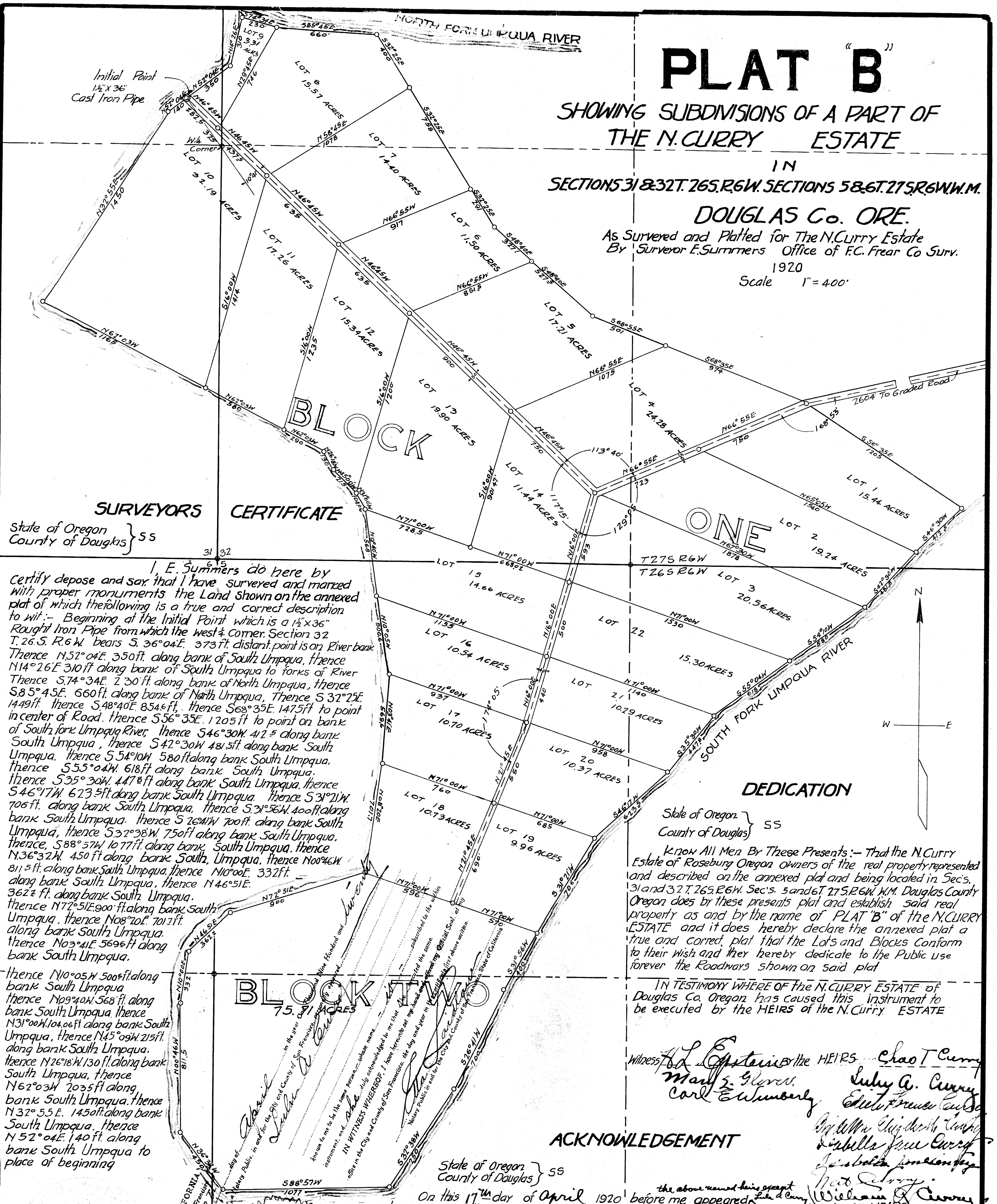
SHOWING SUBDIVISIONS OF A PART OF THE N. CURRY ESTATE

IN SECTIONS 31 & 32 T. 26 S. R. 6 W. SECTIONS 5 & 6 T. 27 S. R. 6 W. M.

DOUGLAS Co. ORE.

As Surveyed and Platted for The N. Curry Estate
By Surveyor E. Summers Office of F.C. Frear Co Surv.

1920
Scale 1" = 400'



SURVEYORS CERTIFICATE

State of Oregon }
County of Douglas } ss

I, E. Summers do hereby certify depose and say that I have surveyed and marked with proper monuments the Land shown on the annexed plat of which the following is a true and correct description to wit: - Beginning at the Initial Point which is a 1 1/2 x 36" Rought Iron Pipe from which the west 1/4 corner Section 32 T. 26 S. R. 6 W. bears S. 36° 04' E. 373 ft. distant, point is on River bank Thence N. 52° 04' E. 350 ft. along bank of South Umpqua, thence N. 14° 26' E. 310 ft. along bank of South Umpqua to forks of River Thence S. 74° 34' E. 230 ft. along bank of North Umpqua, thence S. 85° 45' E. 660 ft. along bank of North Umpqua, Thence S. 32° 25' E. 149 ft. thence S. 48° 40' E. 854 ft. thence S. 68° 35' E. 1475 ft. to point in center of Road. thence S. 56° 35' E. 1205 ft. to point on bank of South fork Umpqua River, thence S. 46° 30' W. 412 ft. along bank South Umpqua, thence S. 42° 30' W. 481 ft. along bank South Umpqua, thence S. 54° 10' W. 580 ft. along bank South Umpqua, thence S. 55° 04' W. 618 ft. along bank South Umpqua, thence S. 35° 30' W. 447 ft. along bank South Umpqua, thence S. 46° 17' W. 623 ft. along bank South Umpqua, thence S. 31° 21' W. 706 ft. along bank South Umpqua, thence S. 31° 36' W. 400 ft. along bank South Umpqua, thence S. 26° 11' W. 700 ft. along bank South Umpqua, thence S. 32° 38' W. 750 ft. along bank South Umpqua, thence S. 88° 57' W. 1077 ft. along bank South Umpqua, thence N. 36° 32' W. 450 ft. along bank South Umpqua, thence N. 00° 46' W. 811 ft. along bank South Umpqua, thence N. 10° 00' E. 332 ft. along bank South Umpqua, thence N. 46° 51' E. 362 ft. along bank South Umpqua, thence N. 72° 51' E. 900 ft. along bank South Umpqua, thence N. 08° 10' E. 701 ft. along bank South Umpqua, thence N. 03° 41' E. 596 ft. along bank South Umpqua, thence N. 10° 05' W. 500 ft. along bank South Umpqua, thence N. 09° 40' W. 568 ft. along bank South Umpqua, thence N. 31° 00' W. 104.06 ft. along bank South Umpqua, thence N. 45° 09' W. 215 ft. along bank South Umpqua, thence N. 26° 18' W. 130 ft. along bank South Umpqua, thence N. 62° 03' W. 203 ft. along bank South Umpqua, thence N. 32° 55' E. 145 ft. along bank South Umpqua, thence N. 52° 04' E. 140 ft. along bank South Umpqua to place of beginning

DEDICATION

State of Oregon }
County of Douglas } ss

KNOW All Men By These Presents: - That the N. Curry Estate of Roseburg Oregon owners of the real property represented and described on the annexed plat and being located in Sec's. 31 and 32 T. 26 S. R. 6 W. Sec's. 5 and 6 T. 27 S. R. 6 W. M. Douglas County Oregon does by these presents plat and establish said real property as and by the name of PLAT "B" of the N. CURRY ESTATE and it does hereby declare the annexed plat a true and correct plat that the Lots and Blocks Conform to their wish and they hereby dedicate to the Public use forever the Roadways shown on said plat

IN TESTIMONY WHERE OF the N. CURRY ESTATE of Douglas Co. Oregon has caused this instrument to be executed by the HEIRS of the N. CURRY ESTATE

Witness
 Chaot Curry
 Mary S. Glover
 Carl E. Eubank
 Lulu A. Curry
 Edith M. Curry
 William G. Curry
 Sibilla J. Curry
 John A. Curry
 Ned Curry

ACKNOWLEDGEMENT

State of Oregon }
County of Douglas } ss

On this 17th day of April 1920 before me the above named being present to me personally known who being duly sworn, did say that they are the lawful HEIRS and owners of the N. CURRY ESTATE and they do hereby acknowledge that they signed the above certificate of dedication as their voluntary act and deed as authorized by said estate and further acknowledged that said instrument was the free act and deed of the afore-said HEIRS

IN TESTIMONY WHERE OF I have hereunto Set my hand and Seal the day and year above Written

Carl E. Eubank, Notary Public for Oregon
 my commission expires Sept 30, 1923
 Approved April 3 1920
 F. C. Frear
 County Surveyor
 Approved May 5th 1920
 County Clerk

E. Summers
 Approved May 5th 1920
 County Judge

Approved April 7 1920
 County Assessor