

STATE OF OREGON }
COUNTY OF DOUGLAS }
I, BEN B. IRVING, COUNTY SURVEYOR OF DOUGLAS COUNTY OREGON DO HEREBY CERTIFY THAT THIS COPY OF "AMENDED
PLAT OF RAILROAD ADDITION TO REEDSPORT" IS A TRUE AND CORRECT COPY OF THE ORIGINAL PLAT AS FILED IN THE
OFFICE OF THE COUNTY CLERK, AND IS MADE IN COMPLIANCE WITH CHAPTER 92 OREGON LAWS 1953 SEC. 92-130.

Ben Irving
COUNTY SURVEYOR

SUBSCRIBED AND SWORN TO BEFORE ME THIS 9 DAY OF September 1955.

Chas Doerner
COUNTY CLERK

STATE OF OREGON }
COUNTY OF DOUGLAS }
I, CHAS DOERNER, COUNTY CLERK OF DOUGLAS COUNTY OREGON DO HEREBY CERTIFY THAT
THE FOREGOING COPY OF PLAT HAS BEEN BY ME COMPARED WITH THE ORIGINAL THEREOF THAT
IT IS A TRUE AND CORRECT COPY THEREFROM AND OF THE WHOLE THEREOF AS THE SAME
APPEARS ON FILE IN MY OFFICE AND CUSTODY.
WITNESS MY HAND AND OFFICIAL SEAL THIS 9 DAY OF September 1955.

Chas Doerner
COUNTY CLERK

Map of the
Amended Plat of
RAILROAD ADDITION
TO REEDSPORT
DOUGLAS COUNTY,
OREGON.

Scale 300 Ft. = 1 inch.
(560) Et. Robinson, C.E.

CHANGES OF STREET NAMES AUTHORIZED BY CITY ORDINANCE
NO 337, 9-8-47, RECORDED VOL 146, PAGES 396-402
DEED RECORDS 10-9-47

VACATED BY CITY ORD. NO 2001-1026
RECORDED NOV. 9, 2001 IN
BOOK 1812 PAGE 768
CO. CLERK RECORDS.
C.S. FILE 66/22-3

Vacated City Ord #370-316131
Recorded Vol 155 Page 42 8/18/15
Deed Records

VACATED BY ORD. NO. 112-81
RECORDED NOV. 17, 1911 IN
BOOK 112 PAGE 107
CO. CLERK RECORDS.
C.S. FILE 66/22-3

Vacated City Ordinance No 334
7/18/45 Recorded Vol 141 Page 61
Deed Records

VACATED BY ORD. NO. 449
REC. VOL. 325 PG. 327
C.S. FILE 64/72-2

VACATED BY ORD. # 518
REC. VOL. 548 PG. 383
10-20-74

10' STRIP VACATED STRIP
ORD # 723 5/1/34 PG. 44
C.S. FILE 64/65-4

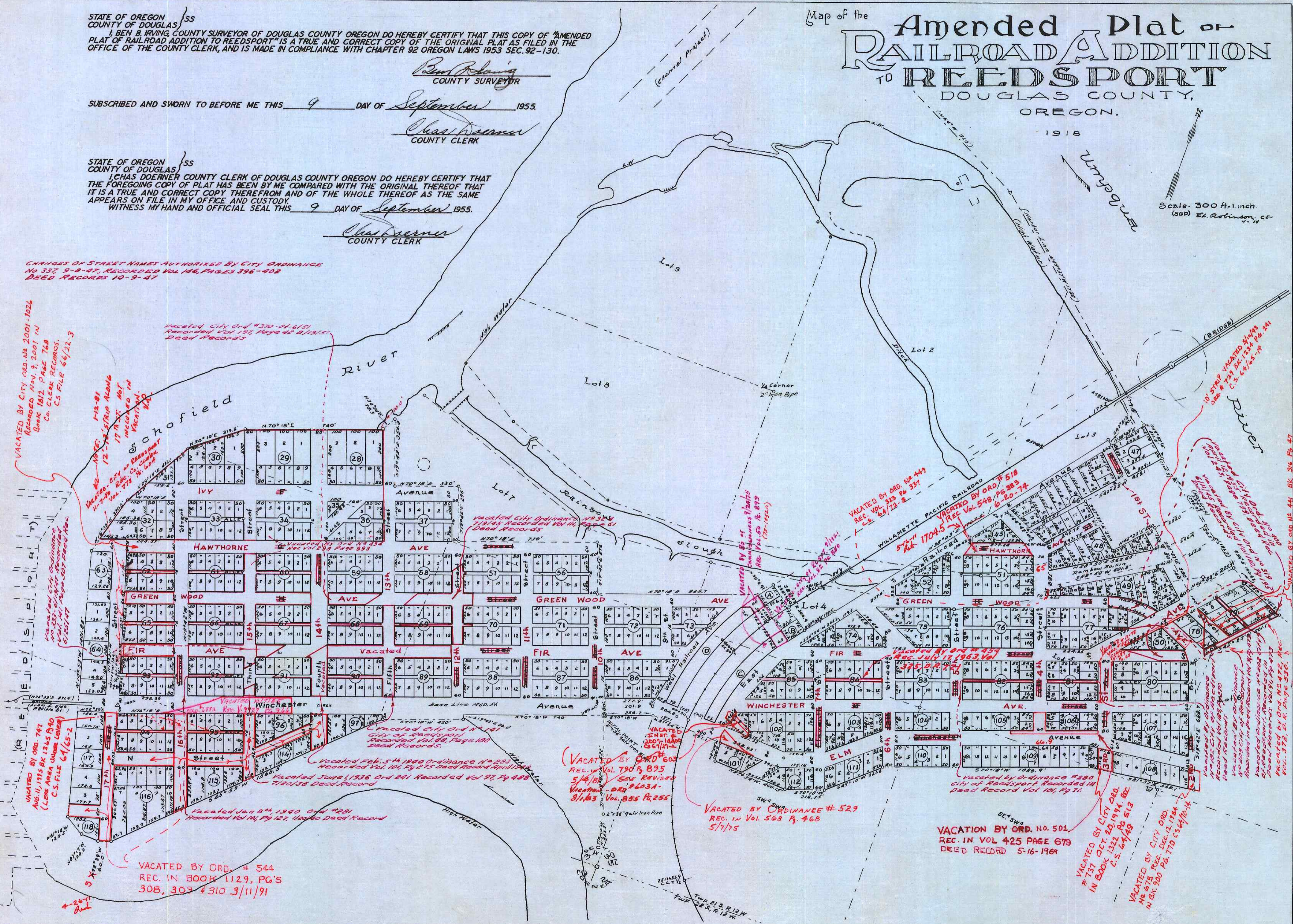
VACATED BY ORD. NO. 44 BK 316 PG. 47
REC. 3-19-89 BK 1104
PG 715 C.S. FILE 66/9-2

VACATED BY ORD. NO. 112-81
RECORDED NOV. 17, 1911 IN
BOOK 112 PAGE 107
CO. CLERK RECORDS.
C.S. FILE 66/22-3

VACATED BY ORD. NO. 112-81
RECORDED NOV. 17, 1911 IN
BOOK 112 PAGE 107
CO. CLERK RECORDS.
C.S. FILE 66/22-3

VACATED BY ORD. NO. 112-81
RECORDED NOV. 17, 1911 IN
BOOK 112 PAGE 107
CO. CLERK RECORDS.
C.S. FILE 66/22-3

VACATED BY ORD. NO. 112-81
RECORDED NOV. 17, 1911 IN
BOOK 112 PAGE 107
CO. CLERK RECORDS.
C.S. FILE 66/22-3



NOTE: DEDICATION ON OPPOSITE SIDE
OF SHEET.

NOTE 2/18/2010: IT APPEARS WHEN REDRAFT OF V5 P42 WAS DONE IN SEPT. 1955, ONLY THE MAP PAGE WAS DRAWN, WE MADE A DUPLICATE MYLAR OF THE ORIGINAL DEDICATION PAGE AND THE PLAT IS NOW NAMED V5 P42 A AND B

CLERK'S CERTIFICATE OF COPY
I, E. M. LEBEX County Clerk of Douglas County, Oregon, hereby Certify that this is a true and complete COPY of the Amended Plat and Dedication of Railroad Addition to Reedsport, as the same appears of record in Volume page in the Record of Town Plats.

VOL. 5 PAGE 42B

by Clerk
Deputy

Amended PLAT and DEDICATION of Railroad Addition to Reedsport, DOUGLAS COUNTY, OREGON.

Know all men by these presents that the Undersigned, W. P. Reed and Margery H. Reed, his wife; Reedsport Company, a Corporation, duly organized and existing under the laws of the State of Oregon, pursuant to a resolution of its board of Directors duly and legally adopted, by W. P. Reed, its President and Jos. Lyons, its Secretary, the owners and proprietors of all of that part of the following described real property which is embraced within the boundaries of the annexed Plat, to-wit: Lots 5, 6 and 7, Section 34, Lots 2, 3, 4, 5, 6, SW¹/₄ SW¹/₄, SE¹/₄ SW¹/₄ Sec. 35 Twp. 21 S, Range 12 West, the tide lands of Mallard Creek (Rainbow Slough); and Lot 4, Section 3, Twp. 22 S, R. 12 W., Wil. Mer, Douglas County, Oregon, (excepting that portion heretofore deeded to Willamette Pacific Railroad Company for right of way purposes.) hereby plat that portion of the same as appears as platted on the annexed map, to be known as the AMENDED PLAT OF RAILROAD ADDITION TO REEDSPORT and hereby DEDICATE to the free use of the PUBLIC forever, for highway purposes, without any reservations or restrictions whatsoever, all the Avenues, Streets and Alleys shown on the said map. In Witness whereof, the above named Grantors have caused these presents to be executed and have hereunto affixed their hands and seals and the corporate seal of said corporation this day of July, A. D. 1918.

Done in the presence of
W. P. Fickler (seal)
Belle Wade (seal)
W. P. Fickler (seal)
Belle Wade (seal)

W. P. Reed (seal)
Margery H. Reed (seal)
Reedsport Company
by W. P. Fickler (seal) its president
by Jos. Lyons (seal) its secretary

State of Oregon }
County of Douglas }
On this 7th day of August A.D. 1918, before me, a Notary Public for Oregon appeared W. P. Reed and Margery H. Reed, his wife, W. P. Reed, president of Reedsport Company and Jos. Lyons, Secretary of Reedsport Company, to me personally known, who being duly sworn did say that they are the identical persons who executed the within and foregoing instrument and who executed the same as their free and voluntary act and deed and for the purposes above mentioned. In Testimony whereof, I have hereunto set my hand and affixed my official seal, this, the day and year first above written.

Belle Wade
Notary Public for Oregon,
My Commission expires Aug. 4, 1921

Surveyor's Certificate

I, E. L. Robinson, being first duly sworn, do say that I have correctly surveyed and marked with proper monuments the lands as shown on the annexed map of the Amended Plat of Railroad Addition to Reedsport, Douglas County, Oregon, the lands described being situated in the following legal subdivisions and tide lands fronting and abutting thereon, to-wit: Lots 5, 6 and 7, Sec. 34, Lots 2, 3, 4, 5, 6, SW¹/₄ SW¹/₄ and SE¹/₄ SW¹/₄ Sec. 35, Twp. 21 S, R. 12 W, and Lot 4, Sec. 3, Twp. 22 S, R. 12 W, Wil. Mer, Oregon, (excepting that portion heretofore deeded to Willamette Pacific Railroad Company for right of way purposes) the Initial Point being marked by a galv. iron pipe 2.36" which is N. 15 W. 153.2 ft. and N. 19 1/2 W. 52.2 ft. from the corner to Secs. 34, 35, 2 and 3 above mentioned. The boundaries of the plat are as follows, to-wit: beginning at the Initial Point and running thence S. 70° 18' W. 740. ft.; S. 18° 42' E. 30. ft.; S. 70° 18' W. 420. ft.; S. 45° 55' W. 1568.5 ft.; S. 72° 39' W. 60. ft.; N. 87° 17' W. 100. ft.; N. 61° 12' W. 124.5 ft.; N. 14° 53' W. 1401.05 ft.; N. 18° 23' E. 330.7 ft.; N. 29° 13' E. 411. ft.; N. 50° 10' E. 319.8 ft.; N. 70° 18' E. 740. ft.; N. 30° 20' E. 78.3 ft.; S. 19° 42' E. 350.3 ft.; N. 70° 18' E. 330. ft.; S. 19° 42' E. 296. ft.; N. 70° 18' E. 730. ft.; S. 19° 42' E. 276. ft.; N. 70° 18' E. 845.7 ft.; N. 36° E. 91. ft.; S. 53° 57' E. 300.4 ft.; N. 37° 03' E. 198.5 ft.; N. 38° 05' E. 1707.5 ft.; S. 47° 37' E. 30.3 ft.; N. 38° 05' E. 203.65 ft.; S. 47° 37' E. 211.8 ft.; S. 42° 23' W. 459.1 ft.; S. 47° 37' E. 300. ft.; N. 42° 23' E. 250. ft.; S. 47° 37' E. 380. ft.; N. 42° 23' E. 225.5 ft.; S. 54° E. 100.63 ft.; S. 68° E. 245.87 ft.; S. 42° 23' W. 501.1 ft.; S. 19° 42' E. 688.7 ft.; S. 81° 37' W. 568.1 ft.; S. 70° 18' W. 1086.9 ft.; S. 48° 10' W. 321.6 ft.; S. 70° 18' W. 244.75 ft.; S. 87° 54' W. 400.15 ft.; N. 25° 4' W. 100.4 ft.; N. 87° 54' W. 397.1 ft.; S. 70° 18' W. 254.2 ft. to the place of beginning.

E. L. Robinson
Surveyor

Sworn and subscribed to before me
this 20th day of July, A.D. 1918.

W. J. Rust
Notary Public for Oregon,
My Commission Expires 7/19/1921

Approval by County Officers

We, the undersigned County Officers of Douglas County, Oregon, hereby, in our respective official capacities, approve the annexed Plat and Dedication

R. W. Marster, Judge
Commissioner
E. W. Thayer, Commissioner
Assessor
M. B. Gannon, Surveyor

Entered in the Court Journal in
Vol. Page
this 7th day of Aug. A.D. 1918
E. M. Leber, Clerk

Filed for Record
Volume Page at
this 7th day of Aug. A.D. 1918
Attest, E. M. Leber, County Clerk
by Deputy

(Note: Map on opposite side of sheet)

Vol 5 Page 42 B

VOL. 5 PAGE 42B