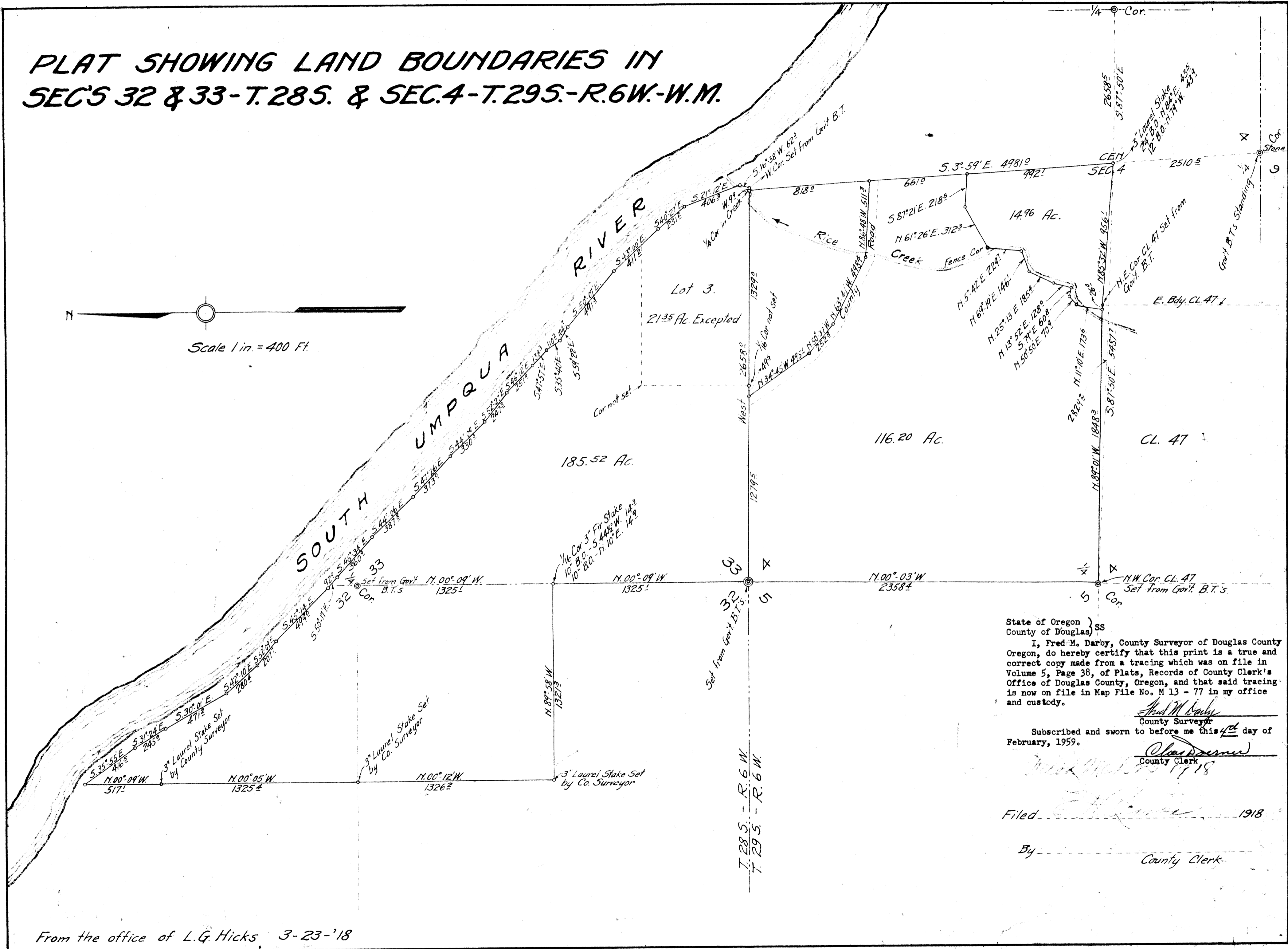
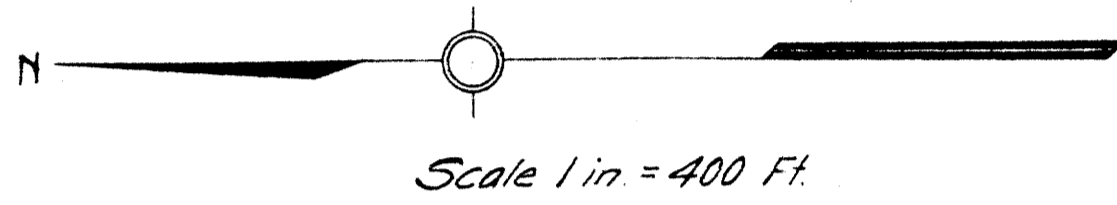


PLAT SHOWING LAND BOUNDARIES IN SEC'S 32 & 33-T.28S. & SEC.4-T.29S.-R.6W.-W.M.



State of Oregon)
County of Douglas) SS
I, Fred M. Darby, County Surveyor of Douglas County Oregon, do hereby certify that this print is a true and correct copy made from a tracing which was on file in Volume 5, Page 38, of Plats, Records of County Clerk's Office of Douglas County, Oregon, and that said tracing is now on file in Map File No. M 13 - 77 in my office and custody.

Fred M. Darby
County Surveyor
Subscribed and sworn to before me this 4th day of February, 1959.

Charles D. ...
County Clerk
Filed *...* 1918

By _____
County Clerk

From the office of L.G. Hicks 3-23-'18

VOL 5 PAGE 38

VOL 5 PAGE 38