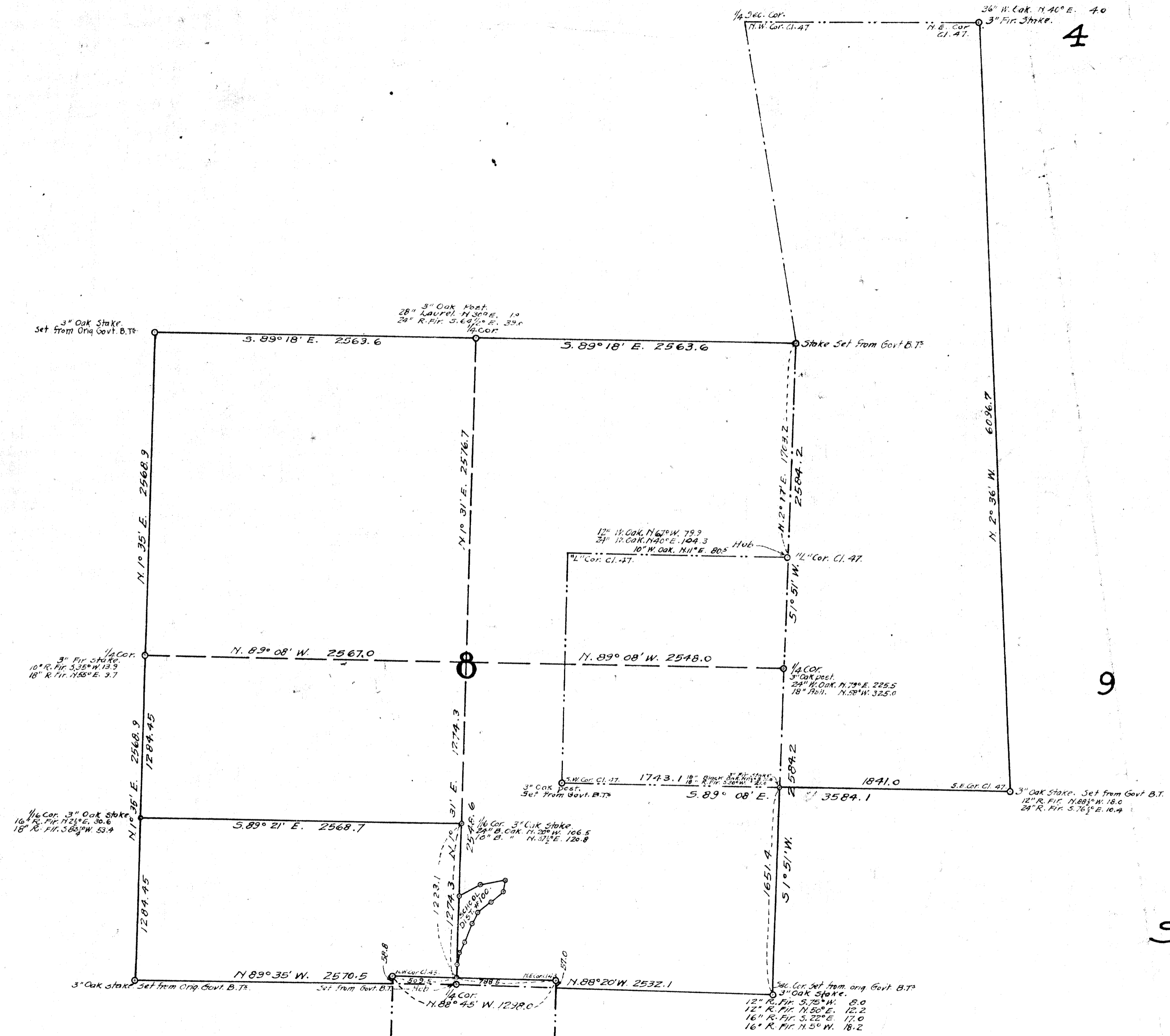


PLAT SHOWING LAND BOUNDARIES IN SECTIONS 4-8 & 9. T-29-S. R-6-W.



State of Oregon } SS
 County of Douglas }
 I, Fred M. Darby, County Surveyor of Douglas County Oregon, Do hereby certify that this print is a true and correct copy made from a tracing which was on file in Volume 5, Page 36, of Plats, Records of County Clerk's Office of Douglas County, Oregon, and that said tracing is now on file in Map File No. M 13 - 71 in my office and custody.

Fred M. Darby
 County Surveyor

Subscribed and sworn to before me this 4th day of February, 1959

Charles A. ...
 County Clerk

SCALE 1"=600'

Jan 27, 1917
Chas. A. ...

FROM THE OFFICE OF L.G. HICKS. 1-9-17.