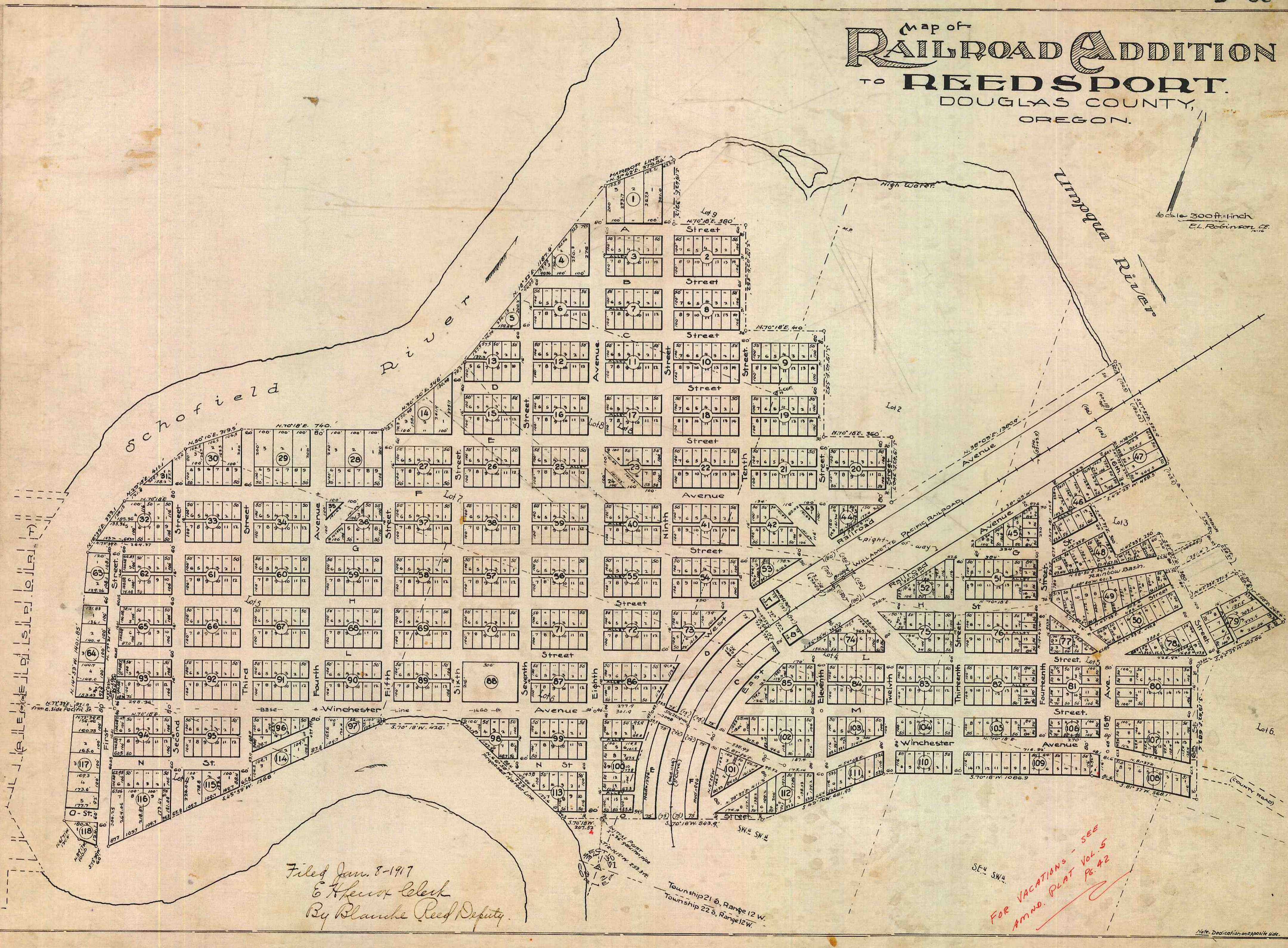


Map of RAILROAD ADDITION TO REEDSPORT. DOUGLAS COUNTY, OREGON.

Scale 300 ft. = 1 inch
E.L. Robinson, C.E.



Filed Jan. 8-1917
E. H. Lewis, Clerk
By Blanche Reed, Deputy.

FOR VACATIONS - SEE
AMND. PLAT VOL. 5
Pg. 42

Note: Dedication on opposite side.