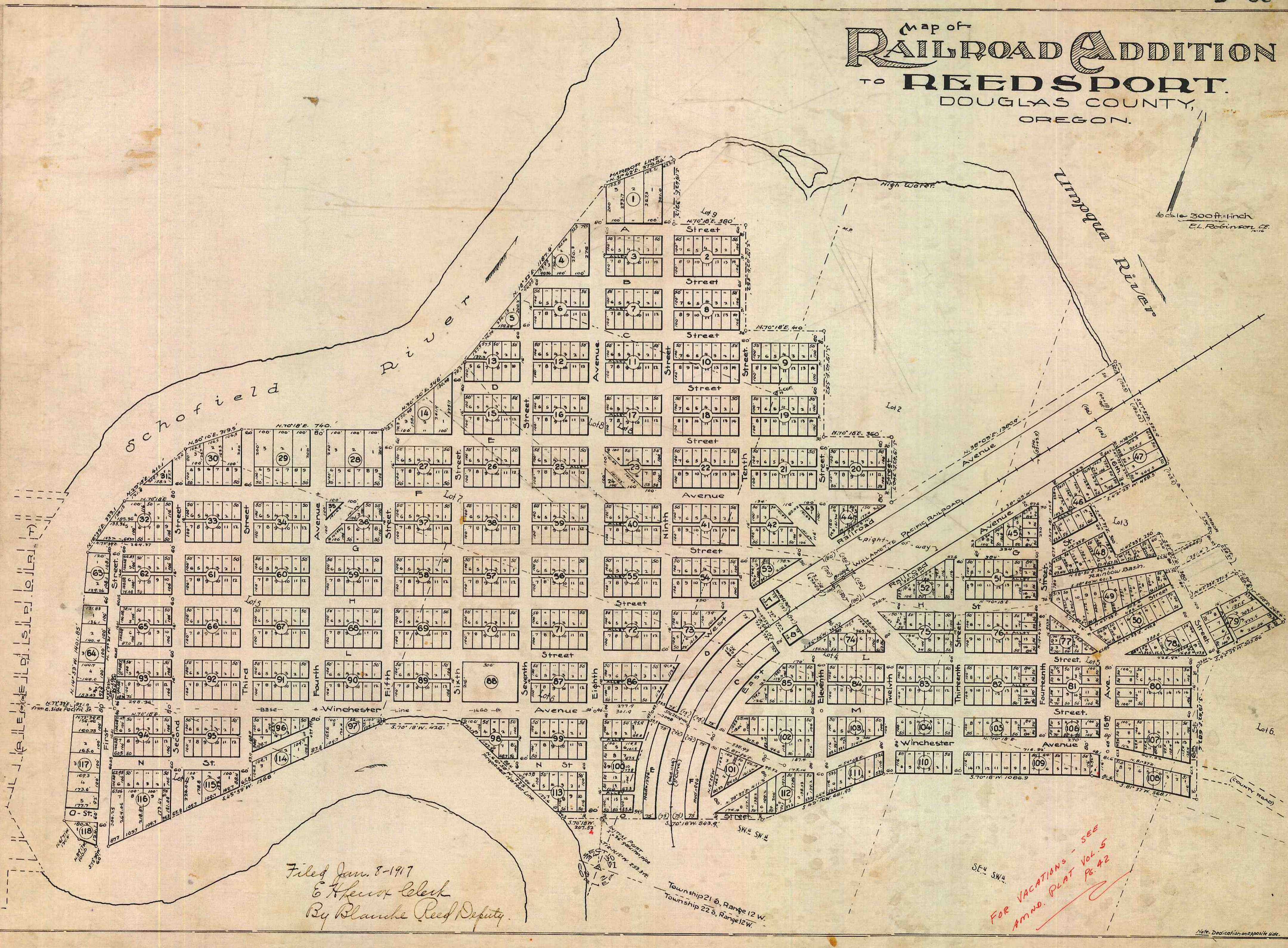


Map of RAILROAD ADDITION TO REEDSPORT. DOUGLAS COUNTY, OREGON.

Scale 300 ft. = 1 inch
E.L. Robinson, C.E.



Filed Jan. 8-1917
E. H. Lewis, Clerk
By Blanche Reed, Deputy.

FOR VACATIONS - SEE
AMND. PLAT VOL. 5
Pg. 42

Note: Dedication on opposite side.

PLAT and DEDICATION
of Railroad Addition to Reedsport,
DOUGLAS COUNTY, OREGON.

Know all men by these presents, that the undersigned -
W. P. Reed and Margery H. Reed, his wife, Reedsport Company,
a Corporation duly organized and incorporated under the laws
of the State of Oregon, pursuant to a resolution of its board of di-
rectors, duly and legally adopted, by W. P. Reed, its President and
Jos. Lyons, its Secretary - the owners and proprietors of all of
that part of the following described real property which embraced
within the boundaries of the annexed plat, to-wit: Lots 5, 7, 8, 9,
Section 34, Lots 2, 3, 4, 5, 6, S.W. 1/4, S.W. 1/4, S.E. 1/4, S.E. 1/4, Section 35, Twp. 21 S.,
Range 12 W. and Lot 4, Section 3, Twp. 22 S., Range 12 W., W. 1/2 Meridian,
Douglas County, Oregon, excepting that portion heretofore deeded to
Willamette Pacific Railroad Company for right-of-way purposes,
hereby plat that portion of the same as appears as platted, on the
annexed map, to be known as RAILROAD ADDITION TO REEDSPORT
and hereby DEDICATE to the free use of the PUBLIC forever, for high-
way purposes, without any reservations or restrictions whatsoever,
all the Avenues, Streets and Alleys which appear on the said map.

In Witness whereof, the above named Grantors have caused these
presents to be executed and have hereunto affixed their hands and seals
and the corporate seal of said corporation this day of December,
A. D. 1916

Done in the presence of
J. G. Gickles
Elizabeth B. Wade

W. P. Reed (seal)
Margery H. Reed (seal)
by W. P. Reed (seal)
its President
by Jos. Lyons (seal)
its Secretary

State of Oregon
County of Douglas

On this 16th day of December, A. D. 1916, before me, a Notary Public
for Oregon, appeared W. P. Reed and Margery H. Reed, his wife,
W. P. Reed, president of Reedsport Company and Jos. Lyons, secre-
tary of Reedsport Company, to me personally known, who being duly sworn
did say that they are the identical persons who executed the within and
foregoing instrument and who executed the same as their free and
voluntary act and deed and for the purposes above mentioned.

In Testimony whereof, I have hereunto set my hand and affixed my official
seal, this the day and year first above written.

Belle Wade
Notary Public for Oregon
My Commission Expires 5-13-17

Surveyors Certificate

I, E. L. Robinson, being first duly sworn, do say that I have
correctly surveyed and marked with proper monuments the lands as
shown on the annexed map of RAILROAD ADDITION TO REEDSPORT, Douglas Co.,
Oregon, the lands described being situated in the following legal subdivisions and
the Tide Lands fronting and abutting thereon, to-wit: Lots 5, 6, 7, 8, 9, Sec. 34, Lots 2, 3, 4,
5, 6, S.W. 1/4, S.E. 1/4, S.W. 1/4, Sec. 35, Twp. 21 S., Range 12 W. and Lot 4, Sec. 3, Twp. -
22 S., Range 12 W. Will. Mer., Oregon, the Initial Point being marked by a 2 1/2"
iron pipe 2 1/2" x 3/8" in, which is N. 15° W. 253.7 feet from the corner to Sections
34, 35, 2 and 3 above mentioned; the block corners of said plat being marked
by posts 3" x 3" x 24" or 2" x 4" x 24", alleys by 2" x 2" x 24" and lots by 1" x 2" x 18".

The boundaries of the plat are as follows, to-wit: beginning at the Initial Point
and running thence S. 70° 10' W. 207.52 ft.; N. 66° 58' W. 725. ft.; S. 70° 18' W. 420. ft.;
S. 45° 39' W. 156.8 ft.; S. 72° 39' W. 60. ft.; N. 87° 17' W. 100. ft.; N. 61° 27' W. 124.4 ft.;
N. 14° 53' W. 1401.85 ft.; N. 16° 39' E. 333.1 ft.; N. 79° 15' E. 411.1 ft.; N. 58° 10' E. 319.5 ft.;
N. 70° 18' E. 740. ft.; N. 30° 26' E. 348. ft.; N. 18° 52' E. 1187.4 ft.; N. 51° 42' E. 373.84 ft.;
S. 19° 42' E. 321.2 ft.; N. 70° 18' E. 380. ft.; S. 18° 42' E. 552. ft.; N. 70° 18' E. 410. ft.;
S. 19° 42' E. 552. ft.; N. 70° 18' E. 360. ft.; S. 18° 42' E. 340.7 ft.; N. 38° 00' E. 1380.9 ft.;
S. 47° 37' E. 592.9 ft.; S. 42° 23' W. 459.5 ft.; S. 47° 37' E. 300. ft.; N. 42° 23' E. 250. ft.;
S. 47° 37' E. 380. ft.; N. 42° 23' E. 271.5 ft.; S. 54° 00' E. 100.6 ft.; S. 60° 00' E. 245.4 ft.;
S. 42° 23' W. 503.86 ft.; S. 18° 42' E. 682. ft.; S. 81° 37' W. 568.1 ft.; S. 70° 18' W. 1086.9 ft.;
S. 49° 10' W. 681.95 ft.; S. 70° 18' W. 843.9 ft. To the place of beginning, expressly
excepting therefrom, the lands herein contained which have heretofore
been deeded to Willamette Pacific Railroad Company for right-of-way
purposes.

E. L. Robinson
Surveyor

Sworn and subscribed to before me
this 11th day of December A. D. 1916

W. P. Reed
Notary Public for Oregon
My Commission Expires 7/20/1917

Approval by County Officers.

We the undersigned, County
Officers of Douglas County, Oregon,
hereby, in our respective official ca-
pacities, approve the annexed Plat
and Dedication of RAILROAD ADDITION
TO REEDSPORT.

R. W. Masters, Judge.
D. P. Nichols, Commissioner.
W. A. M. Commissioner.
J. L. Calhoun 1/4/17 Assessor.
W. B. Semmond 1/4-17 Surveyor.

Entered in the Court Journal - Vol. 1
page This 8 day of Jan
A. D. 1917

E. H. Reed
By Blanche Reed
Deputy

this 8 day of January 1917
Attest E. H. Reed County Clerk
by Blanche Reed deputy

(Note - wrong on opposite side.)