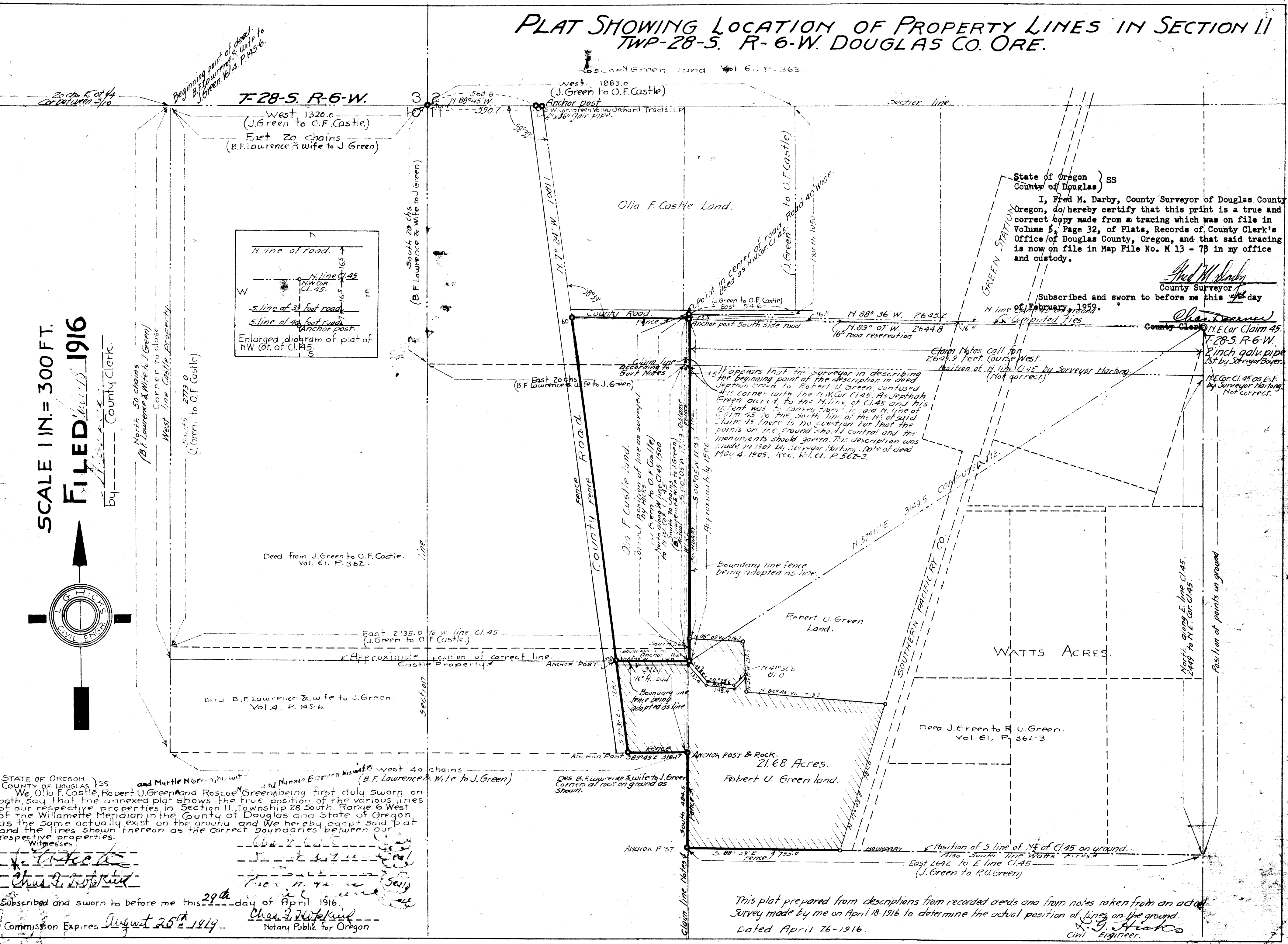
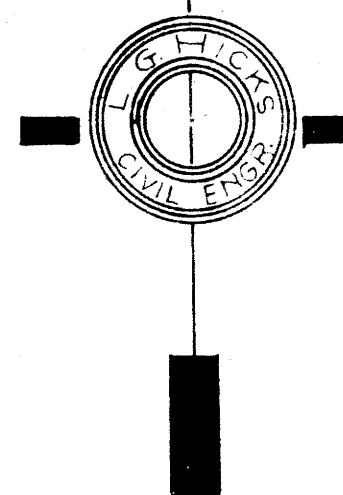


PLAT SHOWING LOCATION OF PROPERTY LINES IN SECTION 11 TWP-28-S. R-6-W. DOUGLAS CO. ORE.



SCALE 1 IN. = 300 FT.
 FILED *Apr 18 1916*
 by *G. J. Hutto* County Clerk.



State of Oregon } ss
 County of Douglas }
 I, Fred M. Darby, County Surveyor of Douglas County Oregon, do hereby certify that this print is a true and correct copy made from a tracing which was on file in Volume 5, Page 32, of Plats, Records of County Clerk's Office of Douglas County, Oregon, and that said tracing is now on file in Map File No. M 13 - 73 in my office and custody.

Fred M. Darby
 County Surveyor

Subscribed and sworn to before me this *29th* day of *February*, 1916.

Chas. J. Hutto
 County Clerk

15. It appears that the surveyor in describing the beginning point of the description in 2003 Septin Green to Robert U. Green contused this corner with the N.E. Cor. of Cl. 45. As Septin Green owned to the N. line of Cl. 45 and his intent was to convey from his said N. line of Cl. 45 to the South line of the N. of said Claim 45 there is no question but that the points on the ground should control and the monuments should govern. This description was made in 1909 by Surveyor Hartung. Date of deed May 4, 1905. Rec. Vol. 61, P. 562-3.

Claim Notes call for 2642.9 feet. Course West. Assumed at N. line Cl. 45 by Surveyor Hartung. (Not correct)

N.E. Cor. Cl. 45 as set by Surveyor Hartung. Not correct.

STATE OF OREGON } ss
 County of Douglas }
 We, Olla F. Castle, Robert U. Green and Roscoe Green being first duly sworn on oath, say that the annexed plat shows the true position of the various lines of our respective properties in Section 11, Township 28 South, Range 6 West of the Willamette Meridian in the County of Douglas and State of Oregon as the same actually exist on the ground and we hereby adopt said plat and the lines shown thereon as the correct boundaries between our respective properties.

Witnesses:
Chas. J. Hutto
Chas. J. Hutto
 Subscribed and sworn to before me this *29th* day of *April*, 1916.
 Commission Expires *August 25th 1919*
Chas. J. Hutto
 Notary Public for Oregon

This plat prepared from descriptions from recorded deeds and from notes taken from an actual survey made by me on April 18-1916 to determine the actual position of lines on the ground.
 Dated April 26-1916.
G. J. Hutto
 Civil Engineer.