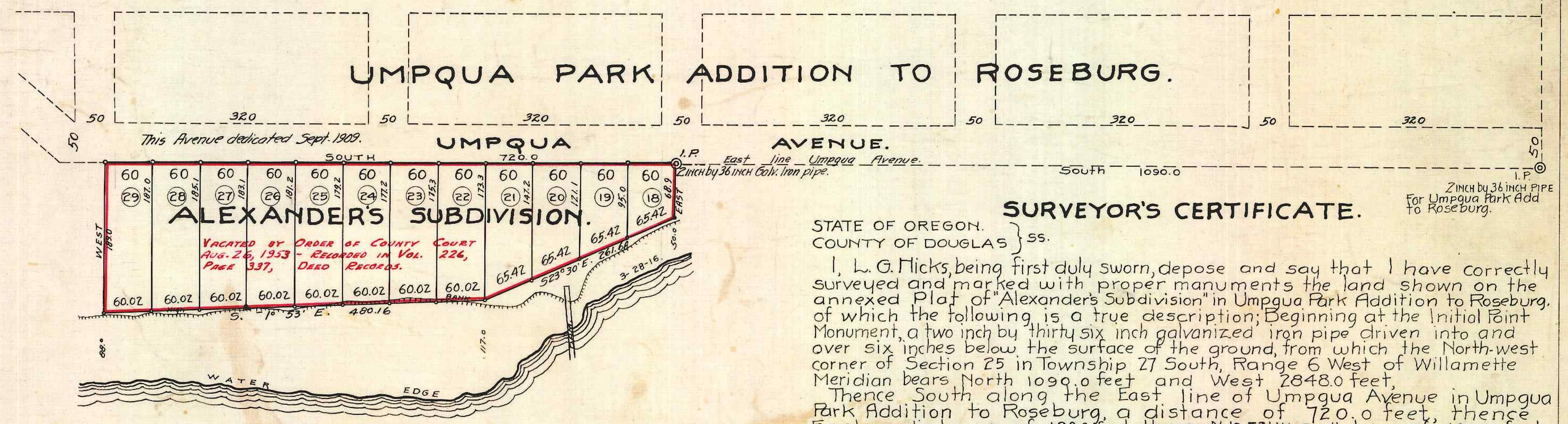
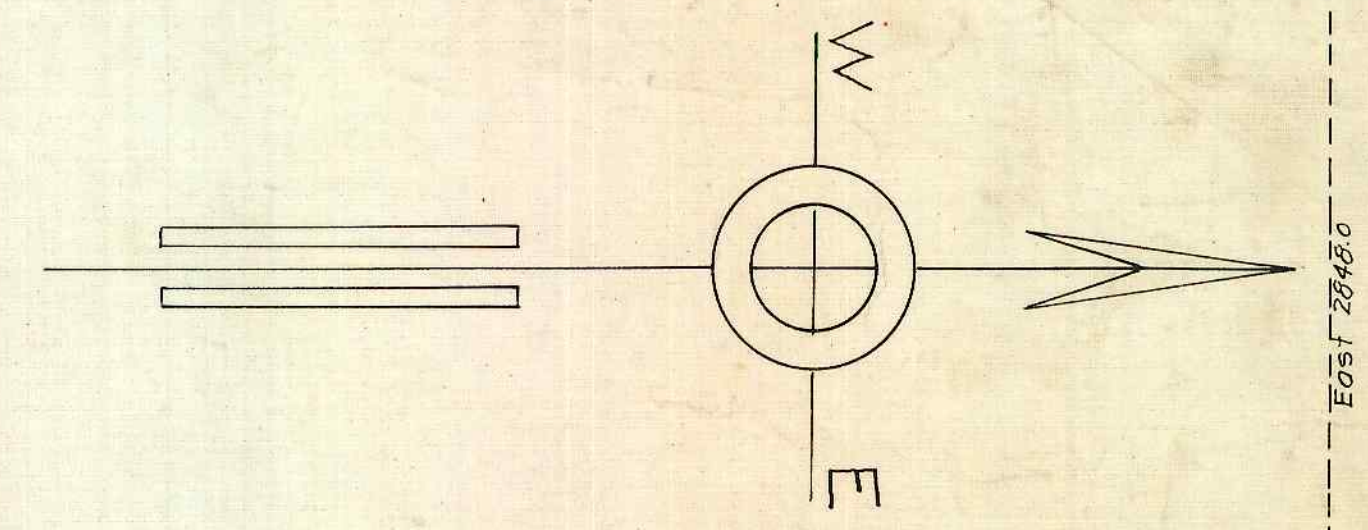


# ALEXANDER'S SUBDIVISION. IN "UMPQUA PARK ADDITION TO ROSEBURG." DOUGLAS CO. ORE.



### SURVEYOR'S CERTIFICATE.

STATE OF OREGON.  
COUNTY OF DOUGLAS } ss.

I, L. G. Micks, being first duly sworn, depose and say that I have correctly surveyed and marked with proper monuments the land shown on the annexed Plat of "Alexander's Subdivision" in Umpqua Park Addition to Roseburg, of which the following is a true description; Beginning at the Initial Point Monument, a two inch by thirty six inch galvanized iron pipe driven into and over six inches below the surface of the ground, from which the North-west corner of Section 25 in Township 27 South, Range 6 West of Willamette Meridian bears North 1090.0 feet and West 2848.0 feet, Thence South along the East line of Umpqua Avenue in Umpqua Park Addition to Roseburg, a distance of 720.0 feet, thence East a distance of 189.0 feet, thence N. 1° 53' W. a distance of 480.16 feet; thence N. 23° 30' W. a distance of 261.68 feet, thence West a distance of 68.9 feet to place of beginning, being a subdivision of Blocks 34 and 35 of Umpqua Park Addition to Roseburg, as surveyed, platted, and recorded in the office of the County Clerk of Douglas County, Oregon, together with a certain strip of land twenty feet in width and extending along the north side of said Block 35, also a certain strip of land fifty feet in width and being situated between said blocks 34 and 35, and also a strip of land ten feet in width and extending along the South side of said block 34, all in the west one-half of the North-East Quarter of Section 25, T-27-S. R-6-W, in the County of Douglas and State of Oregon.

I.P. 2 INCH BY 36 INCH PIPE For Umpqua Park Add to Roseburg.

FILED March 1916.  
L. G. Micks  
COUNTY CLERK.

APPROVED April TERM. 1916. APPROVED April 7 1916. APPROVED 3-29 1916.  
W. H. Marsters COUNTY JUDGE. R. S. Coulter COUNTY ASSESSOR. Frank Cain COUNTY SURVEYOR.

L. G. Micks  
Surveyor.  
Subscribed and sworn to before me this 29<sup>th</sup> day of March, 1916.  
My Commission expires  
November 27, 1916  
M. Albright  
Notary Public for Oregon.

SCALE 1 INCH = 100 FEET.  
FROM THE OFFICE OF  
L. G. MICKS.  
CIVIL ENGR.  
March 1916.