

PLAT H. RIVERVIEW PARK.

A SUB-DIVISION OF LOT 4, SUNSHINE RANCH.

LOCATED IN SECTION 26 ^{PLAT} TWP-26-S. R-5-W.

STATE OF OREGON } COUNTY OF DOUGLAS } SS

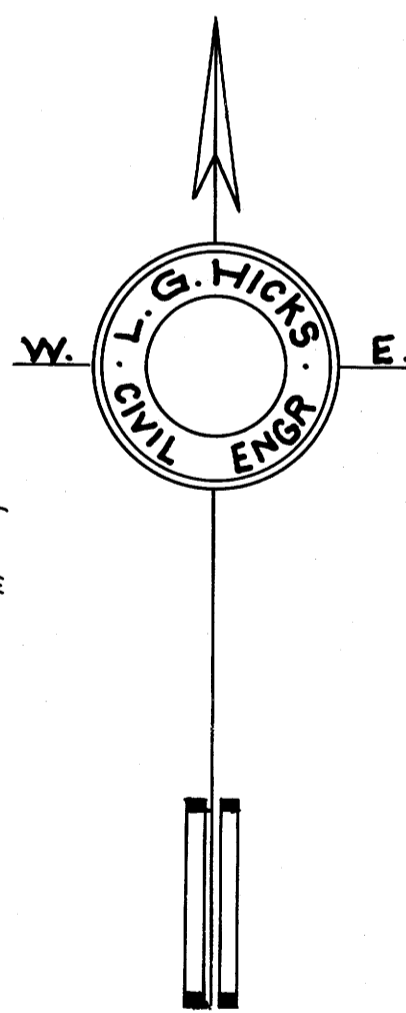
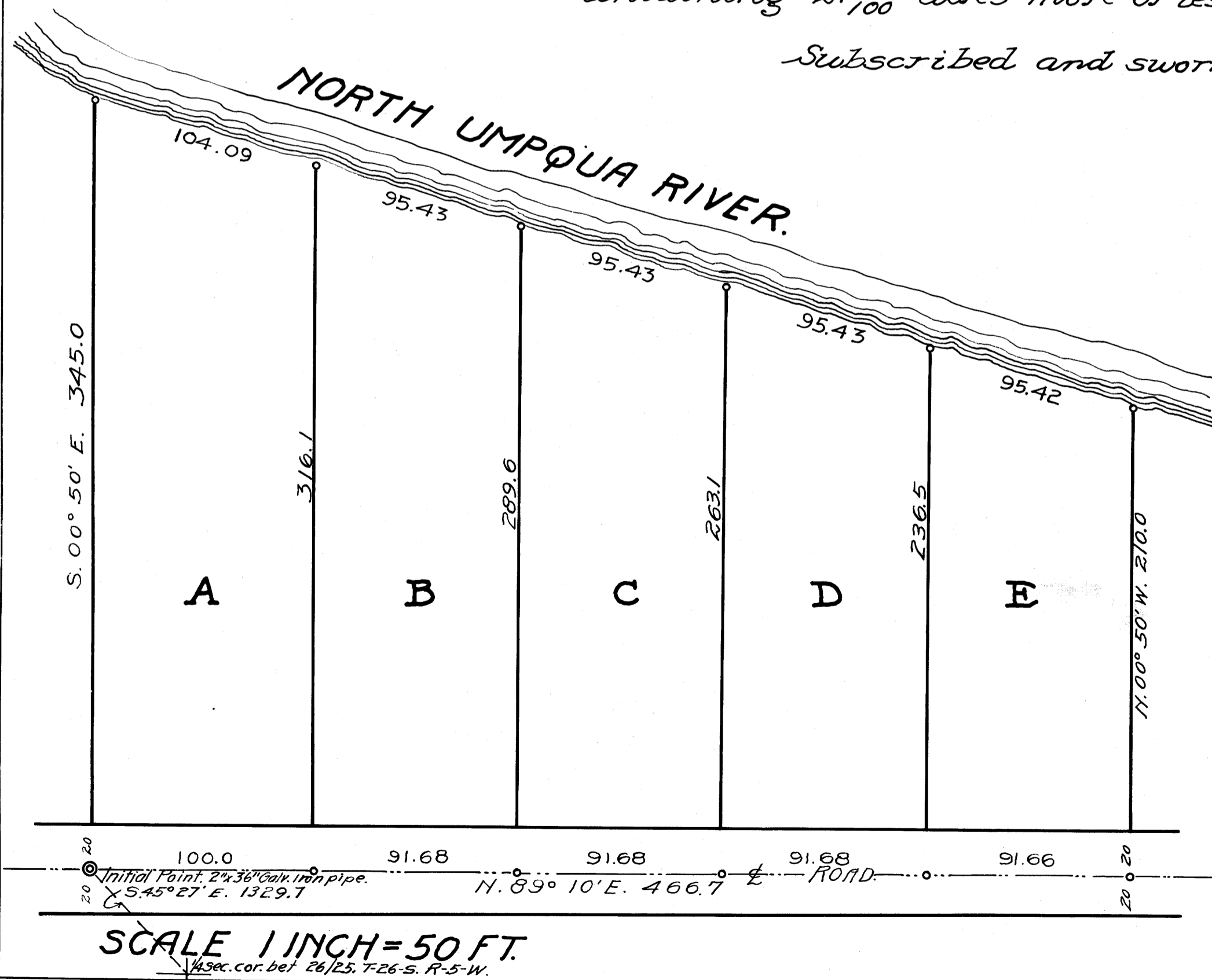
SURVEYOR'S CERTIFICATE.

I, L.G. Hicks, being first duly sworn depose and say that I have correctly surveyed and marked with proper monuments the land shown on the annexed plat of which the following is a true description; Beginning at the Initial Point Monument, a two inch by thirty-six inch galvanized iron pipe, driven more than six inches below the surface of the ground, from which the one-quarter corner between Sections 25 and 26, Twp-26-S. R-5-West of the Willamette Meridian bears S. 45° 27' E. 1329.7 feet. Thence N. 89° 10' E. 466.7 feet to SE. Corner of Plat; Thence N. 00° 50' W. 210.0 feet to NE Corner of Plat; Thence N. 74° 42' W. 485.8 feet to NW Corner of Plat, Thence S 00° 50' E. 345.0 feet to place of beginning and containing 2.97 acres more or less.

L. G. Hicks.
Surveyor.

Subscribed and sworn to this 28th day of October, A.D. 1914.

Chas. J. Wolf
Notary Public for Oregon.



APPROVED 10/28 TERM. 1914.
D. L. Bue
COUNTY JUDGE.

APPROVED 10/28 1914.
A. J. Williams
ASSESSOR.

APPROVED Oct 29th 1914.
Frank Cain
COUNTY SURVEYOR.

FILED Dec 4th 1914.
[Signature]
COUNTY CLERK.

by _____