

PLAT - J

BLOCKS 1-2-A-B+C

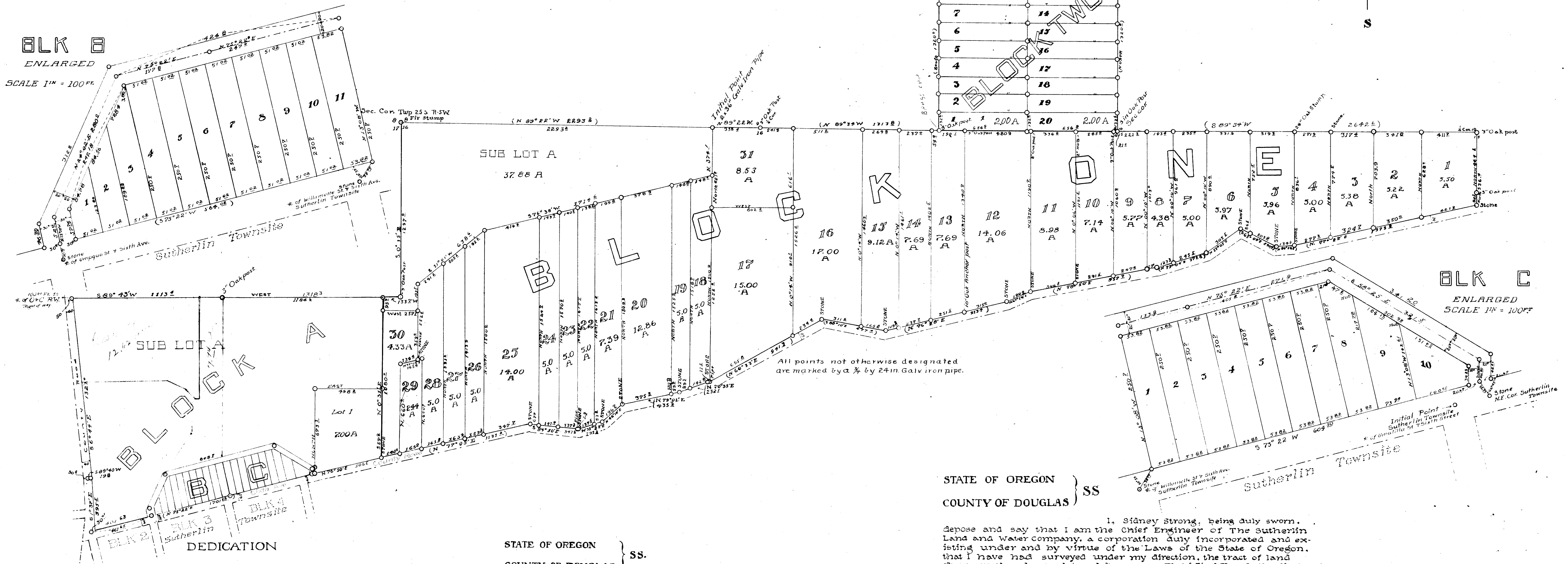
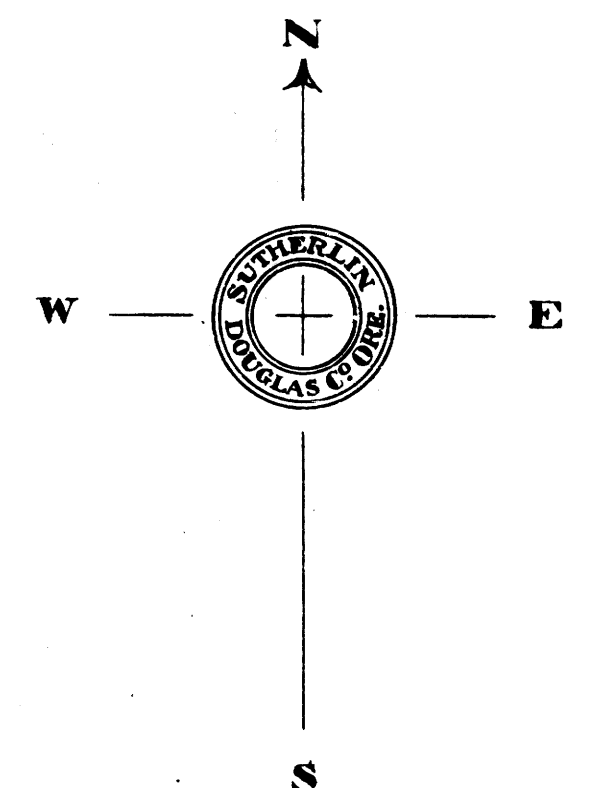
LOCATED IN SECTIONS 9-15-16+17

TWP. 25 S. R-5 W. WILLAMETTE MER.

DOUGLAS CO., OREGON

THE SUTHERLIN LAND & WATER CO.

SCALE 1" = 400 FT



All points not otherwise designated are marked by a 3/8 by 24 in Galv iron pipe.

STATE OF OREGON }
 COUNTY OF DOUGLAS } SS

KNOW ALL MEN BY THESE PRESENTS, That THE SUTHERLIN LAND & WATER COMPANY, a corporation duly incorporated and existing under and by virtue of the Laws of the State of Oregon, owner of the real property represented and described in the within map and located in Sections 9, 15, 16, & 17, Twp 25 S., R-5 W. of the Willamette Meridian, County of Douglas, State of Oregon, does by these presents plat and establish the said tract of real property as and by the name of Plat 'J' of THE SUTHERLIN LAND & WATER COMPANY, and it does hereby declare that the annexed map and plat is a true and correct plat; that the lots and parcels shown and designated upon the within plat are correct and conform with our wish, and we hereby dedicate to the public use forever the roads shown on said plat.

IN WITNESS WHEREOF the said THE SUTHERLIN LAND & WATER COMPANY has caused this instrument to be signed by its President and Secretary, and has caused its corporate seal to be attached hereto.

The Sutherlin Land & Water Co
 By J. L. Luse President
 By W. E. St. John Secretary

STATE OF OREGON }
 COUNTY OF DOUGLAS } SS

On this 2nd day of May, 1911 before me appeared J.F. Luse, to me personally known, who being duly sworn did say that he is the President of The Sutherlin Land & Water Company; and W.E. St. John to me personally known, who being duly sworn did say that he is the Secretary of The Sutherlin Land & Water Company, a corporation, and that the seal affixed to the within instrument is the corporate seal of said corporation and the said J.F. Luse and W.E. St. John do hereby affirm that they signed the above certificate of dedication as their voluntary act and deed as officers of said corporation, and further acknowledged that the said instrument was the free act and deed of The Sutherlin Land & Water Company.

IN TESTIMONY WHEREOF I have hereunto set my hand and affixed my official seal the day and year above written

Chas. G. Glen
 Notary public for Oregon
 Commission expires May 9th 1912.

1, Sidney Strong, being duly sworn, depose and say that I am the Chief Engineer of The Sutherlin Land and Water Company, a corporation duly incorporated and existing under and by virtue of the Laws of the State of Oregon, that I have had surveyed under my direction, the tract of land shown on the above plat and known as Plat 'J' of The Sutherlin Land and Water Company, that the survey and Plat are correct and that the corners and lots have been marked with proper monuments, as directed by Law. I have had set an Initial Point, a 2 by 36 in Galv Iron Pipe, the N.W. Cor. of Lot 31, Blk 1, Plat 'J' from which a 3 in Oak Post the 1/4 cor. of Secs. 9, 15, 16, & 17, Twp 25 S., R-5 W. Willamette Meridian, County of Douglas, State of Oregon, bears S89°22'E 358.4 Ft.; thence N.89°22'W 2293.2 Ft. to a Fir Stump the Section corner, S. 916.12; thence S. 0°15'E 12920 Ft. to a 3 in Oak Post, the S.E. Cor. of the N.E. 1/4 of Sec. 17; thence West 1318.3 Ft. to a 3 in Oak Post, the S.W. Cor. of the N.E. 1/4 of Sec. 17; thence S. 89°45'W 1113.4 Ft. to a 3/4 by 2 1/2 in pipe the N.W. Cor. of Plat 'J' on East Boundary of the O.C. Railway Right of Way; thence S. 89°40'W 19.8 Ft. to a 3/4 by 2 1/2 in pipe; thence S. 1°37'E 395.5 Ft. to a 3/4 by 2 1/2 in pipe, the S.W. Cor. Plat 'J'; thence N 75°22'E 1701.52 Ft. to a stone monument; thence N 75°22'E 506.5 Ft. to a Stone Monument, S.W. Cor. Blk. 1 Plat 'J'; thence N 77°05'E 1131.2 Ft. to a stone monument; thence S 64°50'E 347.6 Ft. to a stone monument; thence N 75°22'E 191.3 Ft. to a Stone Monument; thence N 46°19'E 196.7 Ft. to a Stone Monument, the S.W. Cor. Lot 20, Blk 1, Plat 'J'; thence N 79°01'E 455.2 Ft. to a stone Mon; thence N 70°35'E 252.1 Ft. to a Stone Mon; thence N 60°33'E 913.4 Ft. to a Stone Mon; thence S 80°10'E 477.4 Ft. to a Stone Mon; thence N 76°20'E 913.4 Ft. to a Stone Mon; thence N 67°55'E 108.4 Ft. to a Stone Mon; thence N 78°50'E 957.7 Ft. to a 3/4 by 2 1/2 in pipe; thence N 73°04'E 372.8 Ft. to a 3/4 by 2 1/2 in pipe; thence N 53°05'E 305.5 Ft. to a Stone Mon; thence S 65°09'E 290.4 Ft. to a Stone Mon; thence N 88°26'E 134.6 Ft. to a Stone Mon; thence N 77°22'E 1373.9 Ft. to a Stone Mon, the S.E. Cor. Plat 'J'; thence N 53.6 4 Ft. to a Stone Mon; thence N 77°22'E 1373.9 Ft. to a Stone Mon, the S.E. Cor. Plat 'J'; thence S 89°54'W 264.2 6 Ft. to a 3 in Oak Post, the Sec. Corner of Secs. 9, 10, 15 & 16; thence N. 1320.0 Ft. to a 3 in Oak Post, N.E. Cor. Blk. 2, the N.E. Cor. of the S.E. 1/4 of the S.E. 1/4 of Sec. 9; thence N 59°34'W 1313.8 Ft. to a 3 in Oak Post, the N.W. Cor. Blk. 2, the N.W. Cor. of the S.E. 1/4 of the S.E. 1/4 of Sec. 9; thence S. 1320.0 Ft. to a 3 in Oak Post, the S.W. Cor. of Blk. 2, the S.W. Cor. of the S.E. 1/4 of the S.E. 1/4 of Sec. 9; thence N 89°34'W 1313.5 Ft. to a 3 in Oak Post, the 1/4 Cor. of Secs. 9, 16; thence N 89°22'W 358.4 Ft. to the Point of beginning I also swear that the Sub-division is correct as shown by the Plat which is a correct map of the Sub-division.

Subscribed and Sworn to before me this 2nd day of April 1911. Chas. G. Glen Notary Public for Oregon.
Sidney Strong Chief Engineer.

APPROVED J. L. Luse 1911
 County Judge

APPROVED J. L. Luse 1911
 Assessor

APPROVED Frank Cam 1911
 County Surveyor

FILED 1911
 County Clerk
 deputy