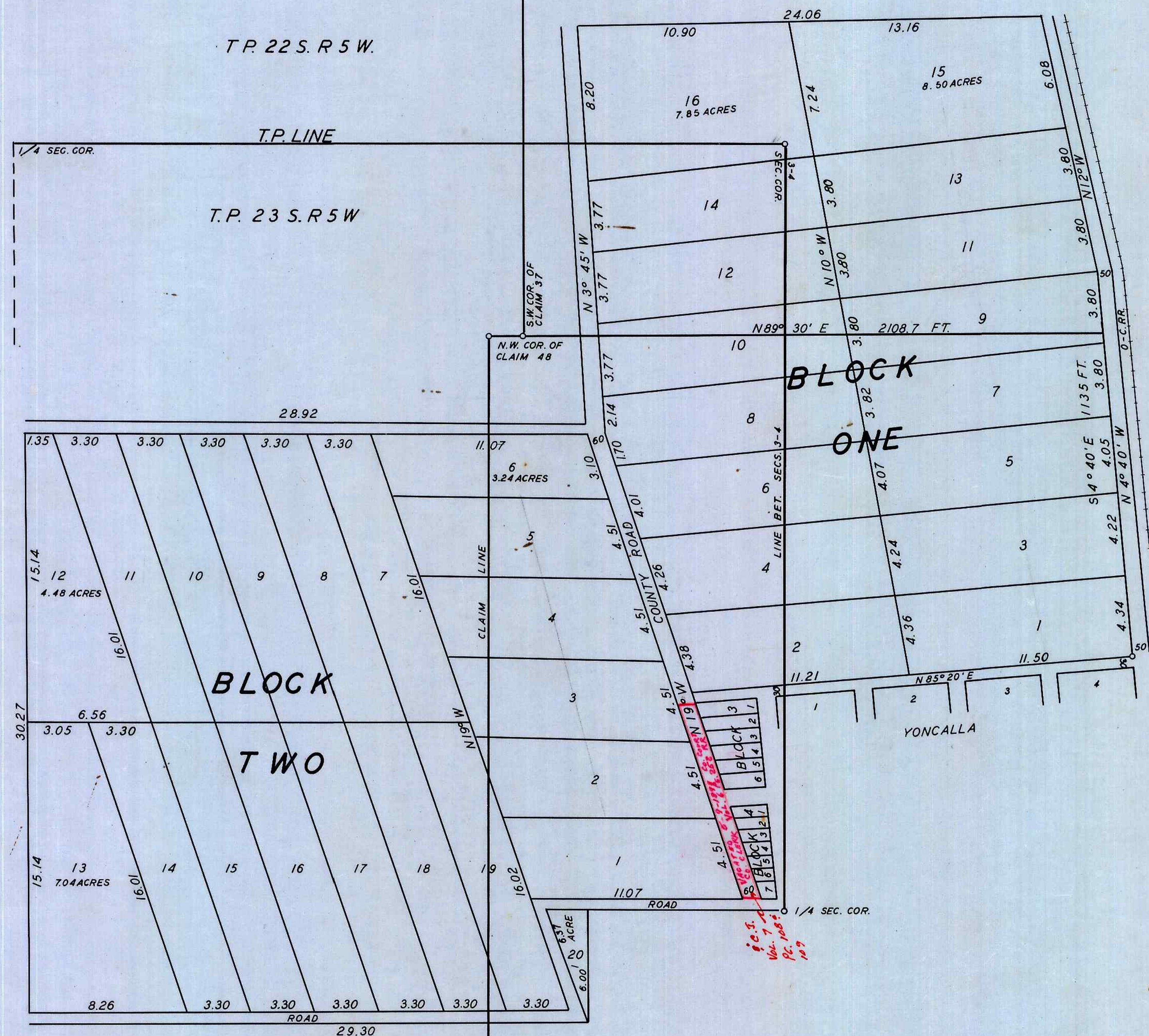


AMENDED PLAT OF DEVORE'S ADDITION TO YONCALLA.



STATE OF OREGON } s.s.
COUNTY OF DOUGLAS }

I, O.F. THIEL, BEING FIRST DULY SWORN DEPOSE AND SAY, THAT I HAVE BY A PROPER SURVEY CORRECTLY RE-ESTABLISHED THE S.E. CORNER OF LOT ONE IN BLOCK ONE OF DEVORE'S ADDITION TO THE CITY OF YONCALLA, BY SETTING A STONE 12 X 10 X 10 INCHES, 6 INCHES UNDERGROUND AND THAT THE SAID POINT BEARS 30 FEET N 4° 40' W OF THE N.E. CORNER OF BLOCK 4 OF YONCALLA, AND THE SAID S.E. CORNER OF LOT ONE BLOCK ONE DEVORE'S ADDITION TO YONCALLA BEARS N 89° 30' E 2108.7 FT. AND S 4° 40' E 1135 FT. OF THE N.W. CORNER OF G.A. BURTS DONATION LAND CLAIM N° 48 IN TP. 23 S. R. 5 W. - THAT THE DESCRIPTION IN THE ORIGINAL PLAT OF DEVORE'S ADDITION TO THE TOWN OF YONCALLA, OREGON, AS SHOWN AND RECORDED ON PAGE 22 VOL. ONE OF TOWN PLATS OF DOUGLAS CO. IS ERRONEOUS IN THIS, THAT THE S.E. CORNER OF LOT ONE IN BLOCK ONE IN SAID ADDITION IS DESCRIBED AS BEING 30 FT. NORTH OF THE N.E. CORNER OF BLOCK 4 TOWN OF YONCALLA - WHEREAS, IN TRUTH AND FACT THE S.E. CORNER OF LOT ONE, BLOCK ONE, IN SAID ADDITION BEARS N 4° 40' W 30 FT. OF THE N.E. CORNER OF BLOCK 4 OF SAID TOWN OF YONCALLA, - THAT THE S.W. CORNER OF LOT 13 BLOCK 2 OF SAID ADDITION IS ERRONEOUSLY DESCRIBED AS BEING NORTH 2.79 CHNS. OF THE 1/4 SECTION CORNER BETWEEN SECTIONS 4-5 TP. 23 S. R. 5 W. - WHEREAS IN TRUTH AND FACT SAID S.W. CORNER OF LOT 13 BLOCK 2 OF SAID ADDITION IS AS SHOWN ON THE ANNEXED PLAT.

THAT THE LAND DESCRIBED IN THE SAID PLAT OF DEVORE'S ADDITION IS LOCATED AS SHOWN ON THE ANNEXED PLAT AND NOT AS SHOWN ON THE ORIGINAL PLAT OF DEVORE'S ADDITION TO THE TOWN OF YONCALLA, AND THAT THE ONLY CORRECTIONS MADE IN THE ORIGINAL SURVEY ARE AS SHOWN ON THE ANNEXED AMENDED PLAT OF DEVORE'S ADDITION TO YONCALLA.

O.F. THIEL (s'g'd.)
SURVEYOR

SUBSCRIBED AND SWORN TO BEFORE ME THIS 12TH DAY OF APRIL, 1911.

SYLVIA J BROWN.
NOTARY PUBLIC



STATE OF OREGON } s.s.
COUNTY OF DOUGLAS }

I, ROY AGEE, COUNTY CLERK OF DOUGLAS COUNTY, OREGON DO HEREBY CERTIFY THAT THE FOREGOING COPY OF PLAT HAS BEEN BY ME COMPARED WITH THE ORIGINAL THEREOF, THAT IT IS A TRUE AND CORRECT COPY THEREFROM AND OF THE WHOLE THEREOF AS THE SAME APPEARS ON FILE IN MY OFFICE AND CUSTODY.

WITNESS MY HAND AND OFFICIAL SEAL THIS 21ST DAY OF October 1952.

Roy Agee
COUNTY CLERK.

APPROVED _____ 1911.
COUNTY SURVEYOR

APPROVED _____ 1911.
COUNTY ASSESSOR

APPROVED _____ 1911.
COUNTY JUDGE