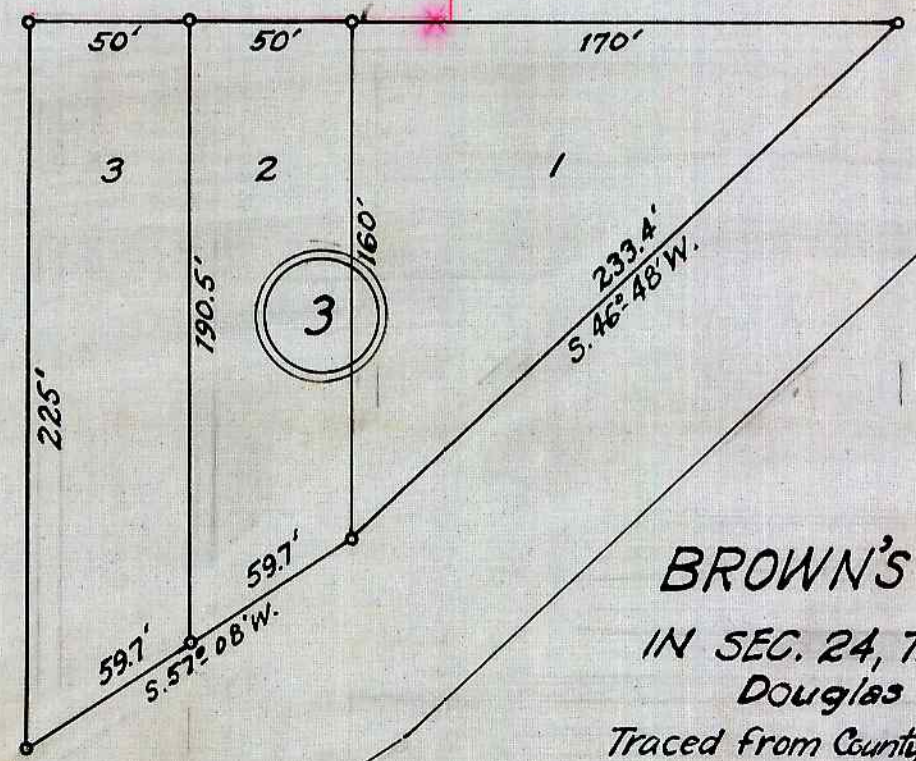


*For Wharton streets see County Court Journals Vol. 10 Page 204 R.C. Brown County Surveyor Dec. 23, 1925*

*ACATED*



**BROWN'S FAIR ACRES**  
IN SEC. 24, T.27S; R.6 W. W. M.  
Douglas County, Ora  
Traced from County Clerk's Recorded Maps by  
A.B. Jan. 1942 - Scale, 1" = 60 ft.

*Unofficial*