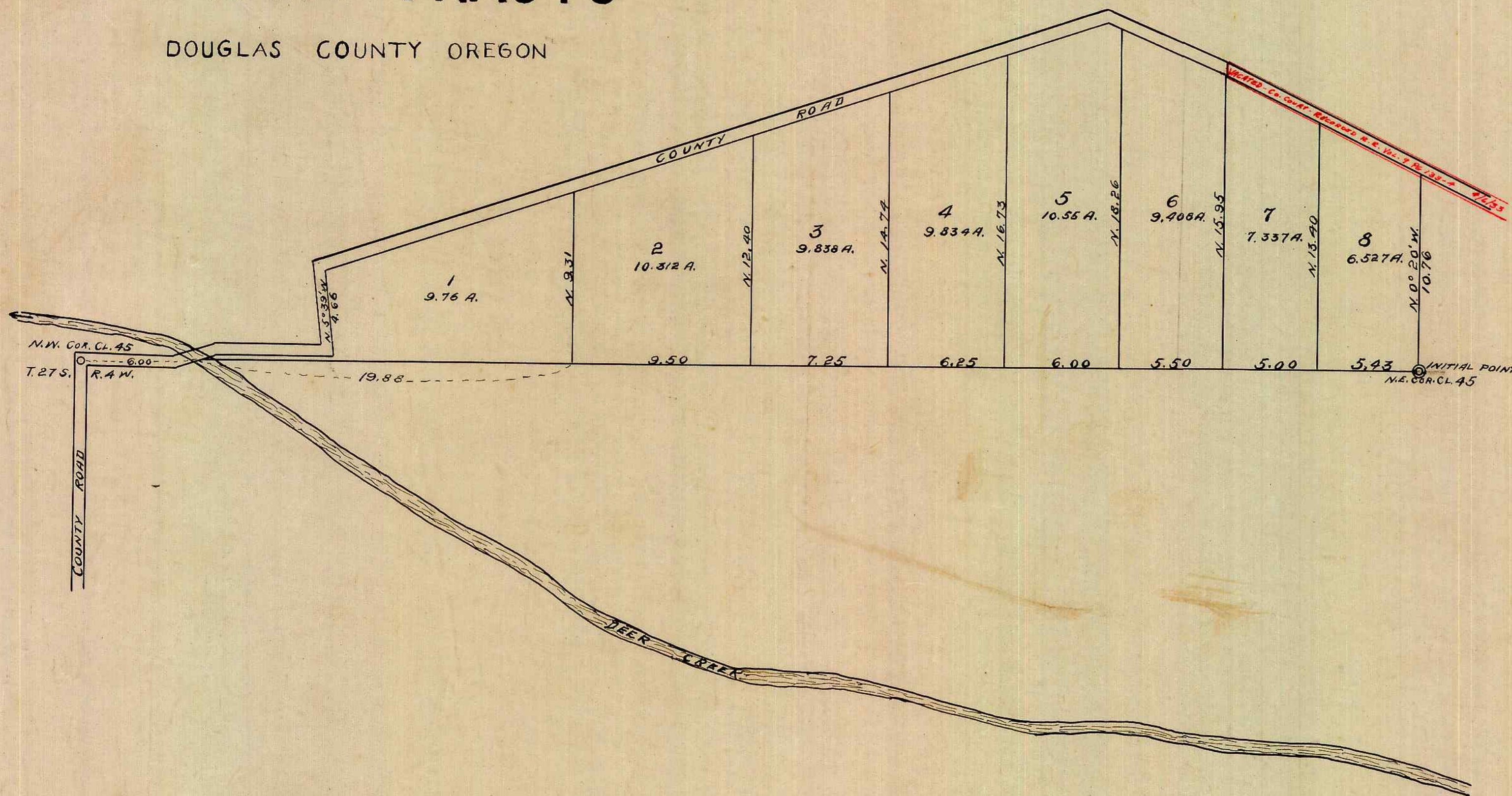


# PLAT-A GLENMOOR ORCHARD TRACTS

DOUGLAS COUNTY OREGON



State of Oregon,  
County of Douglas

I, C. E. Roberts being first duly sworn depose and say that I have surveyed and marked with proper monuments the land shown on this plat of which the following is a true and correct description. Beginning at the Initial Point which is the N.E. cor of D.S.C. No 45 in T. 27 S., R. 4 W., W. M. The same being marked on the ground by a sand stone 7' x 8' x 14". Running thence N. 0° 20' W. 10.76 chs. to County Road, thence along County Road N. 63° 25' W. 11.60 chs., N. 67° 13' W. 6.57 chs., S. 72° 07' W. 44.25 chs., S. 5° 39' E. 4.66 chs., West 6.00 chs., S. 68° 47' W. 0.72 chs. to North line of Cal. 45 aforesaid thence East 64.81 chs. to place of beginning.

C. E. Roberts

Subscribed and sworn to before me this 5th day of November 1910

*W. H. Mason*  
Clerk

Approved

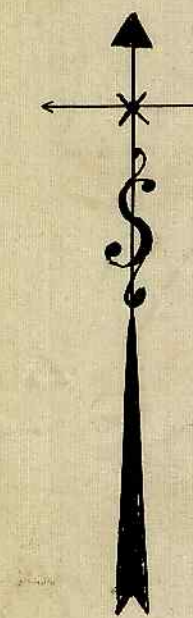
Frank Cain  
Co. Surveyor.

Approved 11/16/10

J. L. Calkin  
Co. Assessor

Approved, Jan. Term, 1911

H. W. Manscatt  
County Judge



Scale - 5 chs = 1 inch