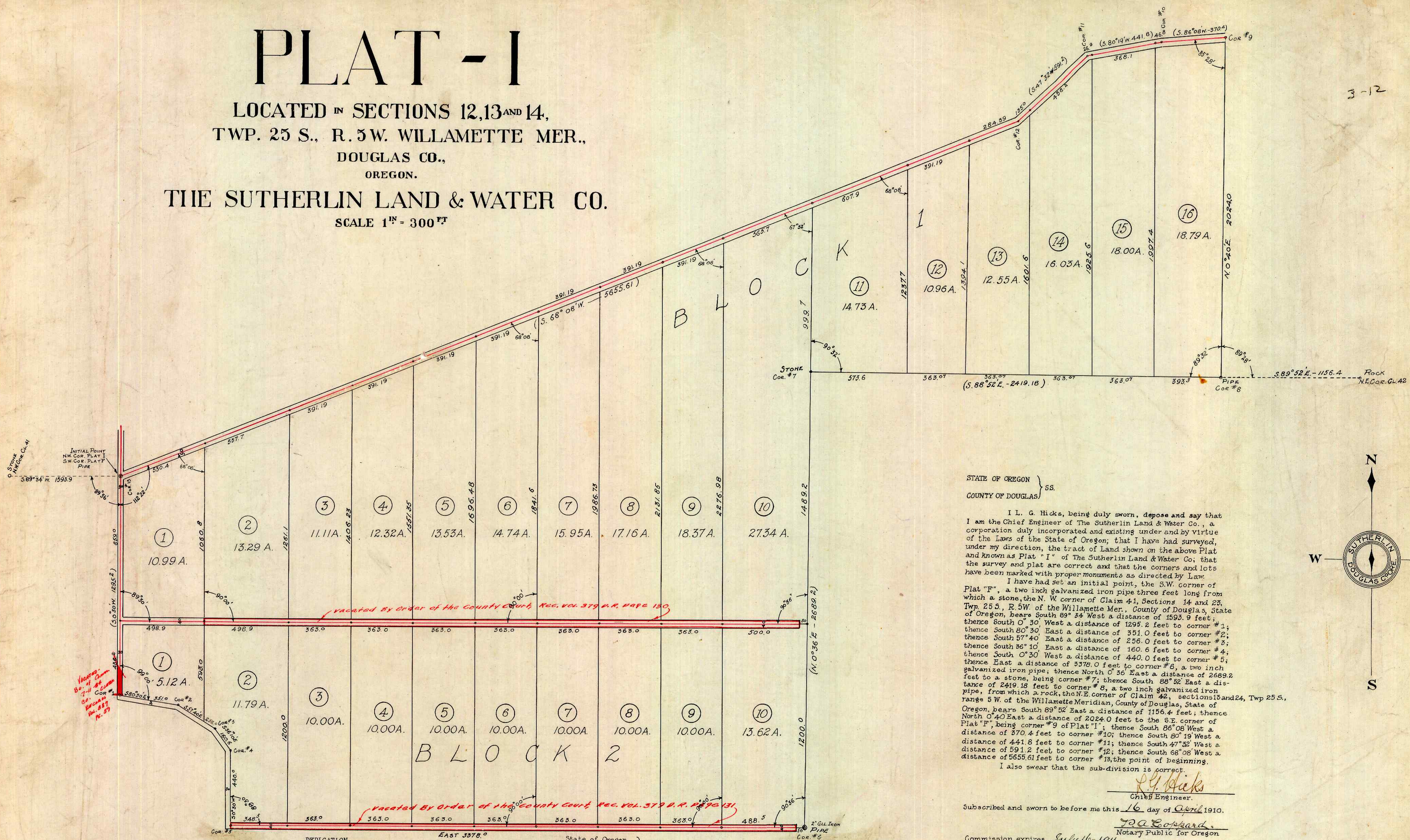


PLAT - I

LOCATED IN SECTIONS 12, 13 AND 14,
TWP. 25 S., R. 5 W. WILLAMETTE MER.,
DOUGLAS CO.,
OREGON.

THE SUTHERLIN LAND & WATER CO.

SCALE 1" = 300 FT



STATE OF OREGON } 55.
COUNTY OF DOUGLAS }

I L. G. Hicks, being duly sworn, depose and say that I am the Chief Engineer of The Sutherlin Land & Water Co., a corporation duly incorporated and existing under and by virtue of the Laws of the State of Oregon; that I have had surveyed, under my direction, the tract of Land shown on the above Plat and known as Plat "I" of The Sutherlin Land & Water Co; that the survey and plat are correct and that the corners and lots have been marked with proper monuments as directed by Law.

I have had set an initial point, the S.W. corner of Plat "F", a two inch galvanized iron pipe three feet long from which a stone, the N. W. corner of Claim 41, Sections 14 and 23, Twp 25 S., R. 5 W. of the Willamette Mer., County of Douglas, State of Oregon, bears South 89° 34' West a distance of 1593.9 feet; thence South 0° 30' West a distance of 1295.2 feet to corner #1; thence South 80° 30' East a distance of 351.0 feet to corner #2; thence South 87° 40' East a distance of 256.0 feet to corner #3; thence South 86° 10' East a distance of 160.6 feet to corner #4; thence South 0° 30' West a distance of 440.0 feet to corner #5; thence East a distance of 3378.0 feet to corner #6, a two inch galvanized iron pipe; thence North 0° 36' East a distance of 2689.2 feet to a stone, being corner #7; thence South 88° 52' East a distance of 2419.18 feet to corner #8, a two inch galvanized iron pipe, from which a rock, the N.E. corner of Claim 42, sections 13 and 24, Twp 25 S., range 5 W. of the Willamette Meridian, County of Douglas, State of Oregon, bears South 89° 52' East a distance of 1156.4 feet; thence North 0° 40' East a distance of 2024.0 feet to the S.E. corner of Plat "F", being corner #9 of Plat "I"; thence South 86° 08' West a distance of 370.4 feet to corner #10; thence South 80° 19' West a distance of 441.8 feet to corner #11; thence South 47° 32' West a distance of 591.2 feet to corner #12; thence South 68° 08' West a distance of 5655.61 feet to corner #13, the point of beginning.

I also swear that the sub-division is correct.

L. G. Hicks
Chief Engineer.

Subscribed and sworn to before me this 16 day of April 1910.

J. A. Colward
Notary Public for Oregon

Commission expires July 16-1911.

KNOW ALL MEN BY THESE PRESENTS, that The Sutherlin Land & Water Company, a corporation duly incorporated and existing under and by virtue of the Laws of the State of Oregon, owner of the real property represented and described in the within map and located in Sections 12, 13 and 14 Twp. 25 S., R. 5 W. of the Willamette Meridian, County of Douglas, State of Oregon, does by these presents plat and establish the said tract of real property as and by the name of Plat "I" of The Sutherlin Land & Water Company, and it does hereby declare that the annexed map and plat is a true and correct plat; that the lots and parcels shown and designated upon the within plat are correct and conform with our wish, and we hereby dedicate to the public use forever the roads shown on said plat.

IN WITNESS WHEREOF the said The Sutherlin Land & Water Company has caused this instrument to be signed by its President and Secretary, and has caused its corporate seal to be attached hereto.

The Sutherlin Land & Water Co.

By *J. F. Luse*
President.
By *T. A. E. Lyman*
Secretary.

State of Oregon } 55.
County of Douglas }

On this 14 day of April 1910, before me appeared J. F. Luse, to me personally known, who being duly sworn did say that he is the President of The Sutherlin Land & Water Company; and T. A. E. Lyman, to me personally known, who being duly sworn did say that he is the Secretary of The Sutherlin Land & Water Company, a corporation, and that the seal affixed to the within instrument is the corporate seal of said corporation, and the said J. F. Luse and T. A. E. Lyman do hereby affirm that they signed the above certificate of dedication as their voluntary act and deed as officers of said corporation, and further acknowledge that said instrument was the free act and deed of The Sutherlin Land & Water Company.

IN TESTIMONY WHEREOF I have hereunto set my hand and affixed my official seal the day and year above written.

L. G. Hicks
Notary Public for Oregon.

Commission expires Dec-23-1911

July Term 1910
APPROVED *G. W. Hancock* 1910.

County Judge
APPROVED *July 1* 1910.

Assessor
APPROVED *April 19* 1910.

County Surveyor
APPROVED *G. Phelps*

Filed July 1st 1910
E. H. Linn
Recorder
VOL. 3-12 PLATS

